



Scan to Folder Setup Tool for SMB v1.0 Software Information

Version 1002
10/02/2017
Software Development Division
KYOCERA Document Solutions Inc.

KDAU Revised
22/08/2018
V2

Revision History

Date	Version	Page	Item
09/27/2017	0927		First release
10/02/2017	1002	5	1.2.Supported Environment, Languages The language of Portuguese (Portugal) was deleted.

1. Overview

Scan to Folder Setup Tool for SMB simplifies the setup process for sending scanned images to a folder via the SMB protocol.

The tool can perform the following procedures for sending scanned images to a PC folder via SMB:

- **Create a shared folder on a PC to receive images**
Using this tool, users can create a new folder on the desktop. The created folder is automatically set as a shared folder.
- **Set the created folder as a destination on the MFP**
Computer name and shared name of created folder is easily registered to the address book on MFP during the procedure.
 - * To use the tool, Admin privileges with the current PC is required.
 - * Admin privileges with the MFP are also required when user authentication is enabled on it.



1.1. Background

The setup process to send scanned data from a MFP to a PC via SMB was deemed to be too complicated by customers. Scan to Folder Setup Tool for SMB was developed to simplify it. With this tool, a shared folder can be easily created on a PC. A user can also manage folder settings from the MFP side.

1.2. Supported Environment

OS: Windows Vista, Windows 7, Windows 8, Windows 8.1, Windows 10

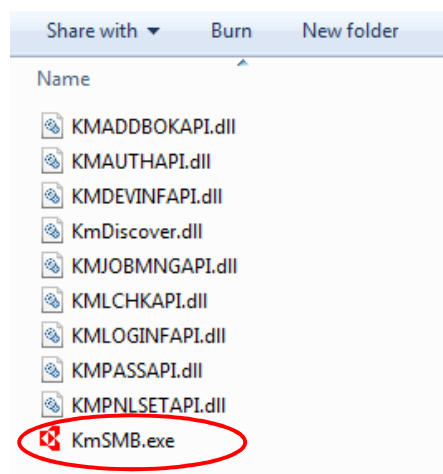
Languages: English, Japanese, German, Italian, Spanish, Portuguese, Simplified Chinese, Traditional Chinese

1.3. Target Users

Primary target: General users unfamiliar with PC

Secondary target: Admin users

Note: Before attempting the steps below, please download the Utility from our Download Centre. Once the file has been downloaded, extract the folder and run the executable file “**KmSMB.exe**”



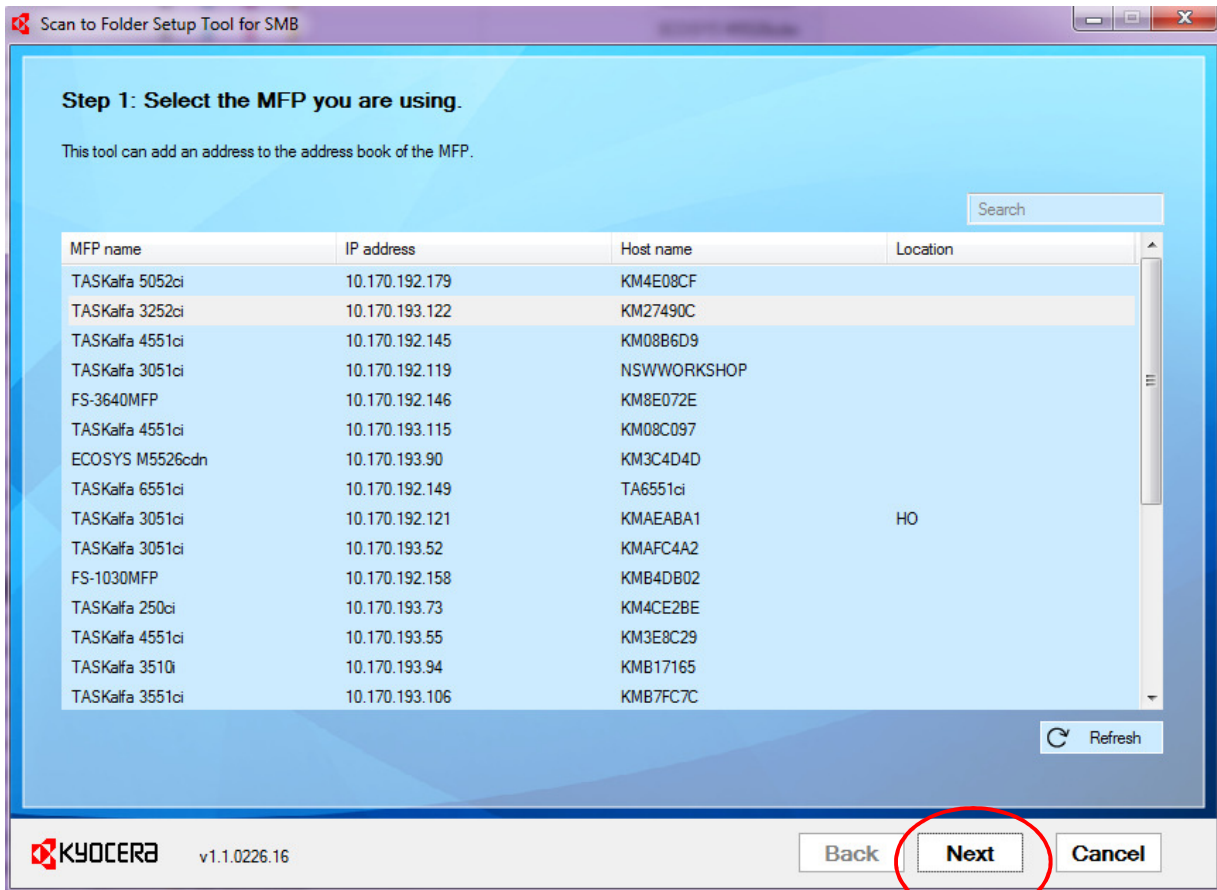
In most cases (depending on your browser) when downloading a file, the browser will save it to the “**Downloads**” folder in your User Profile of your computer.

2. Features

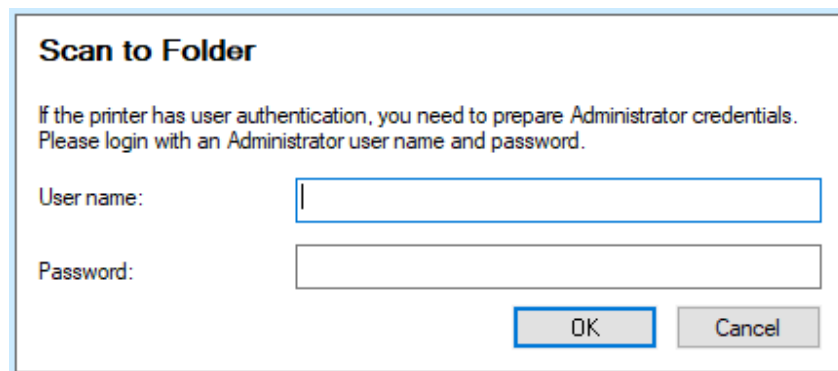
2.1. Device Discovery

When Scan to Folder Setup Tool for SMB is launched, it lists all the MFPs connected to the same network. In this step, select the MFP you are using to configure the Scan to Folder

Clicking the [Refresh] button will update the list with the latest information on all the MFPs connected to the same network. Select a device and click Next



If a MFP has the user authentication feature enabled, accessing to it will launch its login authentication screen. A user can access the MFP by entering a user name and password with Admin privileges on the screen.



2.2. Add a new address

In this step, add an address to the address book of the MFP that you have selected. The address book of the MFP selected by a user is displayed in a list format. A user can add a new address to the address book of the MFP or select an existing folder and location.

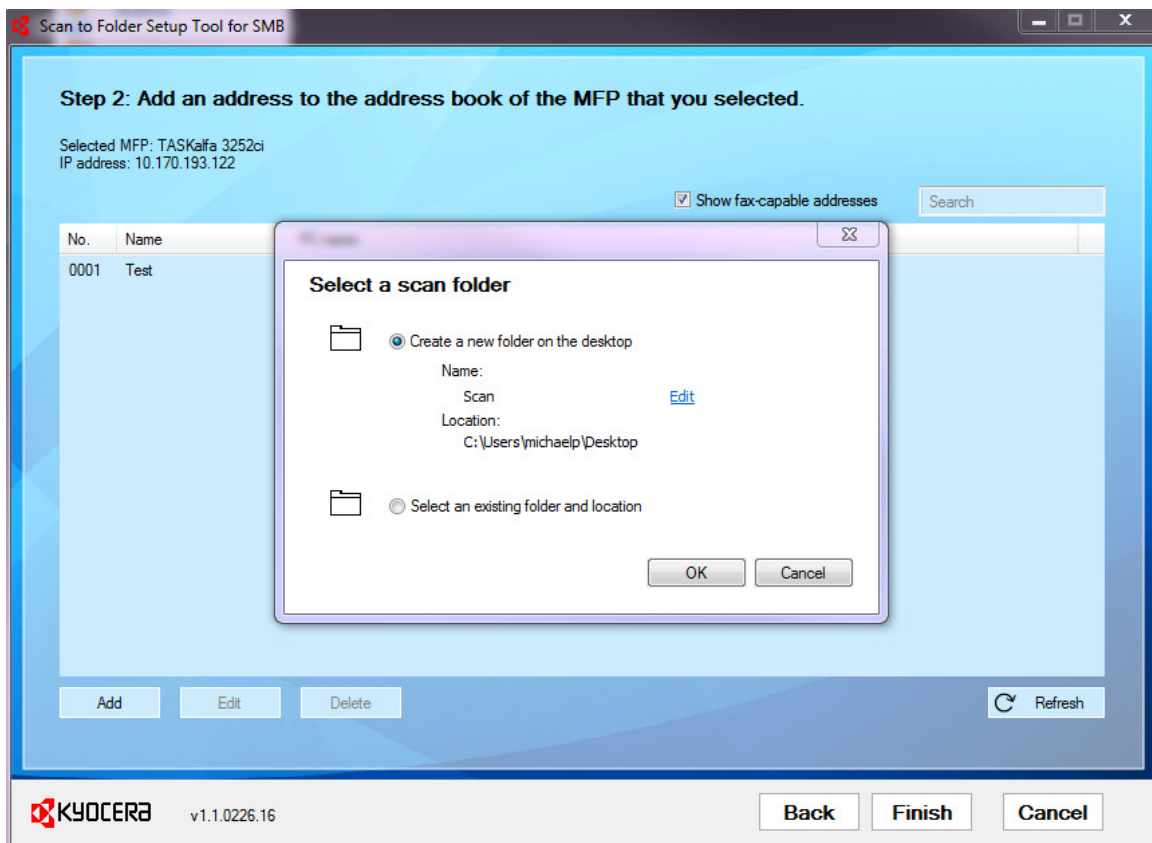
The [Add] button allows a user to add a new address. By clicking the [Refresh] button, the most updated information of the address book of the selected MFP is displayed.

2.2.1. Create a new folder

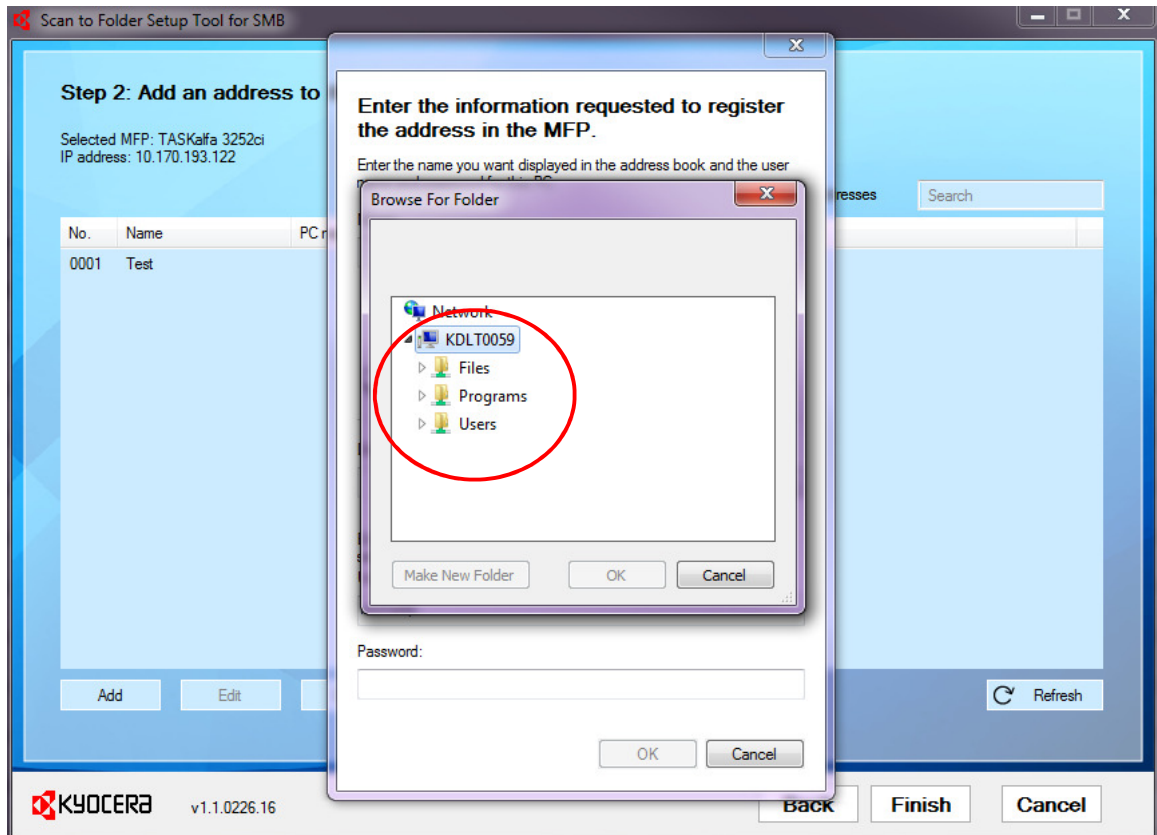
A user can create a new folder on the desktop by selecting the first option.

The Edit link allows the user to change the folder name.

* When a new folder is created, a new address associated with the folder is also added to the address book of the MFP.



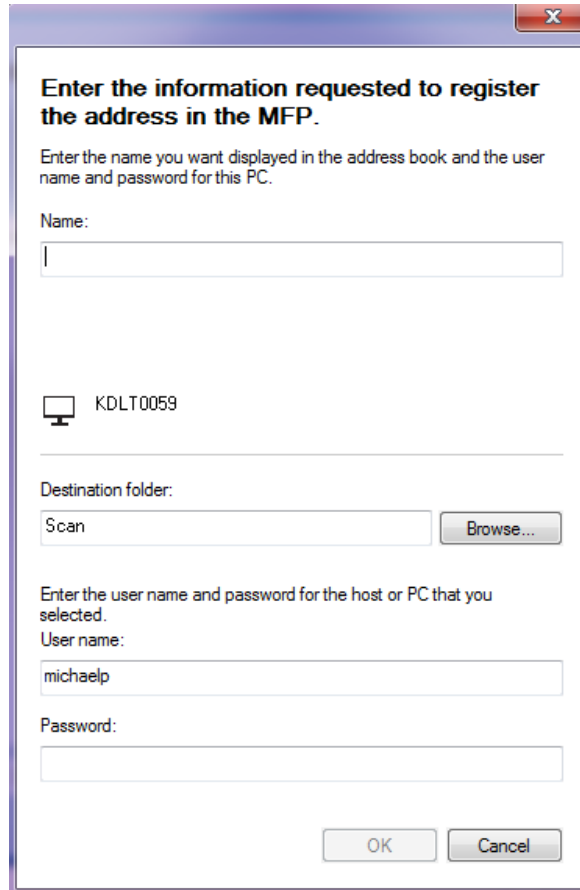
If you have selected the second option, you will be shown with below screen shot. After browsing to the destination folder, the SMB Tool will then display your folders on your computer.



Note: When creating a new folder, the folder is automatically placed in the desktop of the User's Profile. When selecting an existing folder and location, the SMB Tool will only locate folders that are only 'Shared'.

*** Enter PC information**

In the “Enter the information requested to register the address” window, a user is prompted to enter information about the current PC. The information entered here is registered to the address book of the MFP as an address.



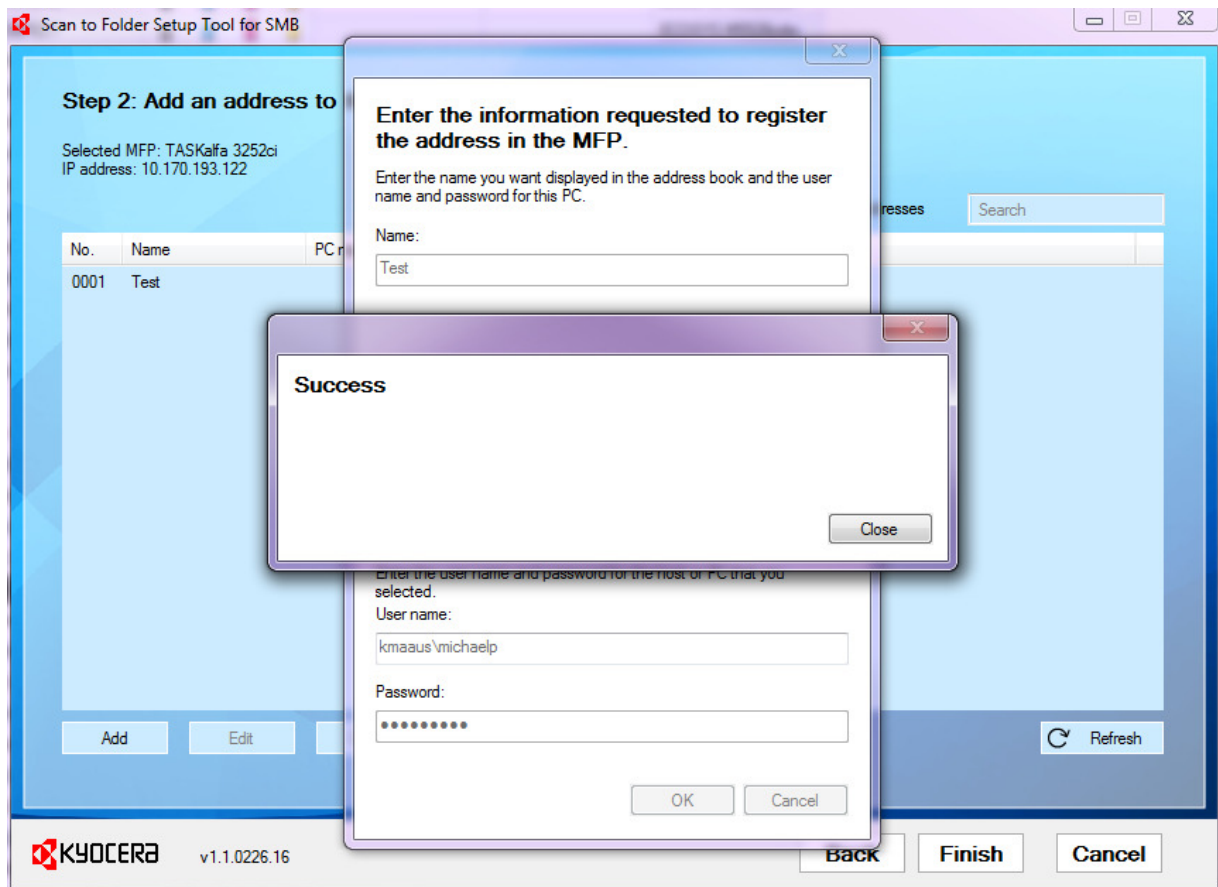
Item	Description
Name	A name to be displayed in the address book.
Destination folder	The path to the shared folder. (The name of destination folder which is created as default is shown.)
Username	The user name on the current PC. (The displayed user name is the one used to log in to the current PC.)
Password	The password corresponding to the user name being used to log in to the current PC. (Optional)

* A host name or a destination folder name can include 2-byte characters, but only supported MFP models can process it correctly. (For the models supporting 2-byte characters in host or destination folder names, see Limitations section.)

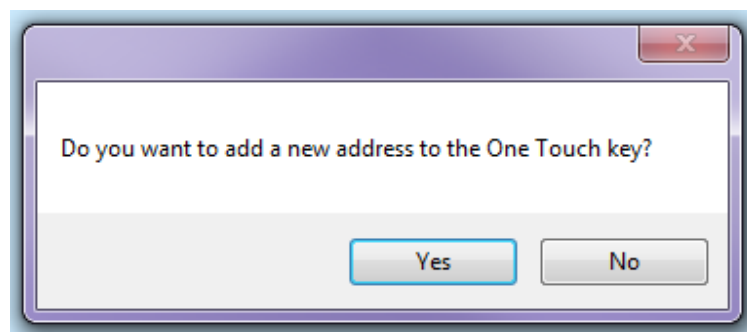
2.2.2. Select an existing folder

A user can select an already shared folder on the PC, instead of creating a new folder on the desktop.

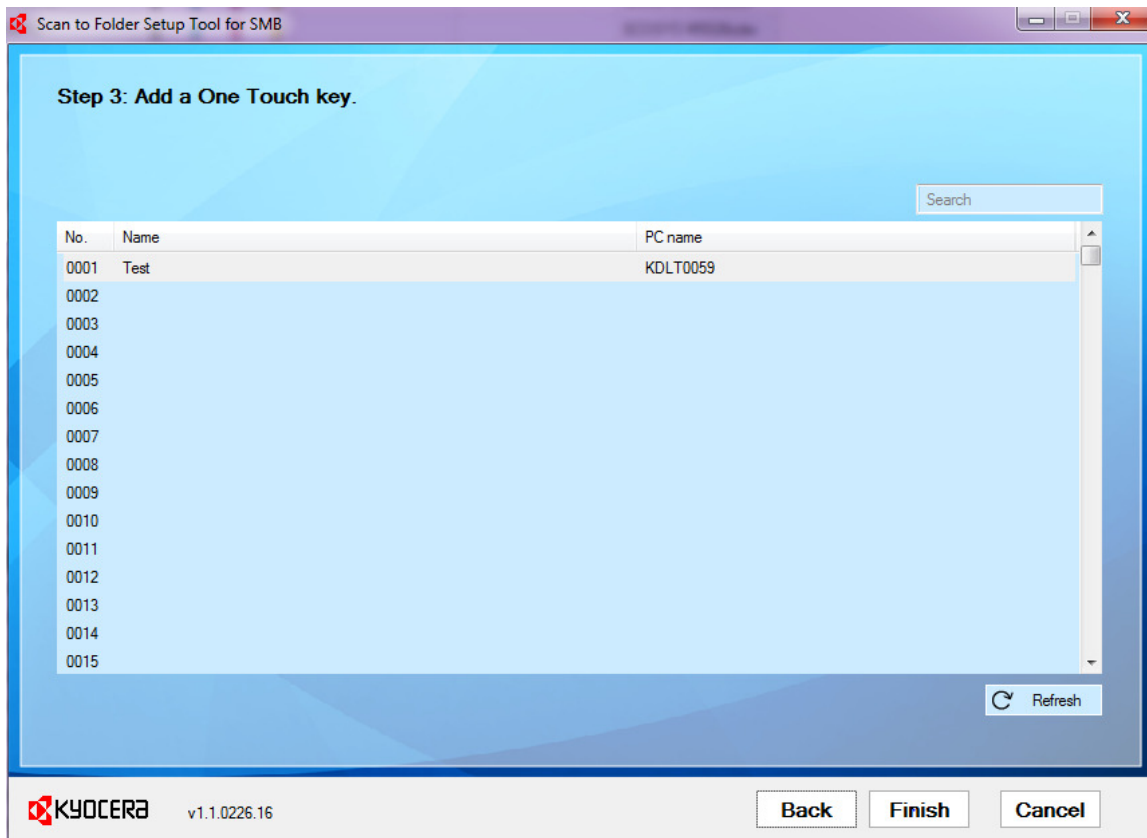
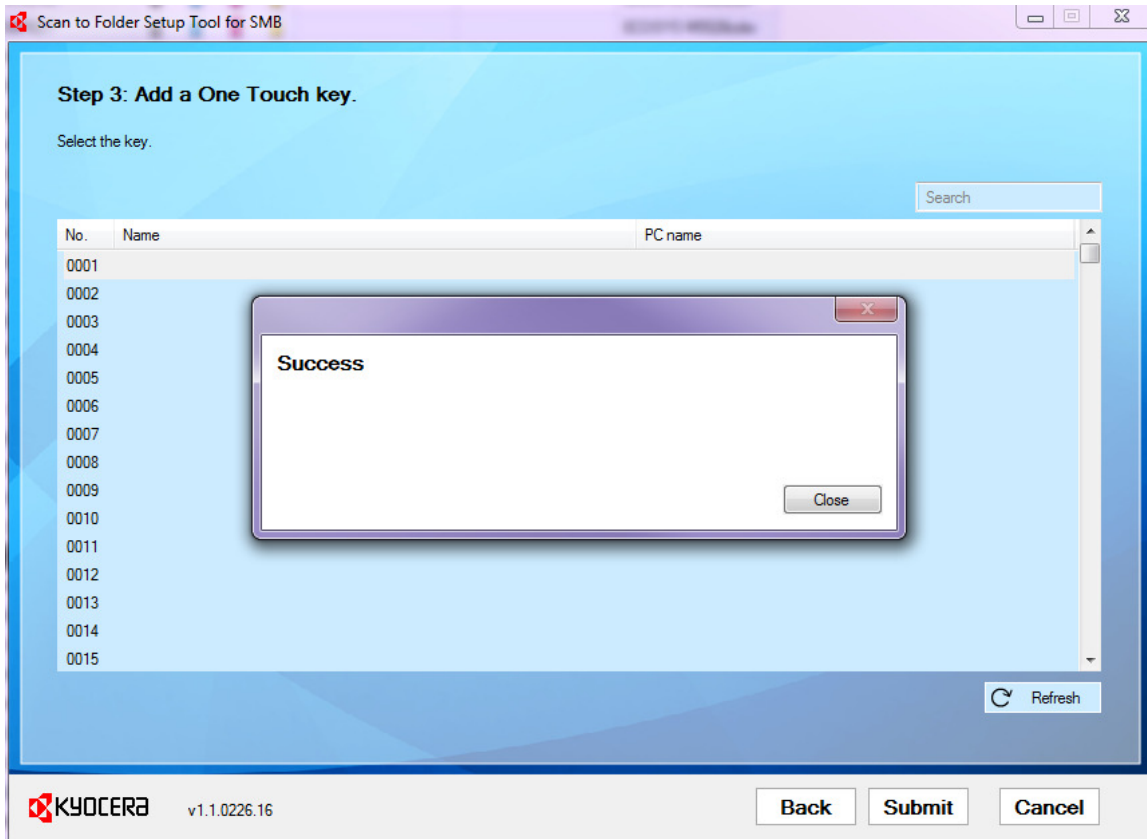
After entering the Name, select an existing folder or created a new folder, enter the credentials of your computer. You will have successfully configured a destination to scan on your MFP.



You are then prompted to add the new address to the One Touch Key, select Yes



Choose the number you wish to add the One Touch on the MFP and click Submit. Click Finish to close off the SMB Tool Utility or if you wish to create another destination then please start over.



3. Supported Models

All models (later than Saturn) which have SMB sending feature.

4. Limitations

Models supporting 2-byte characters

The following models support 2-byte characters when adding a host name or a destination folder name. For non-supported models, please use 1-byte characters. If 2-byte characters are used with non-supported models, a host name or destination folder name will not be set or displayed correctly.

Tomcat3	TASKalfa 4012i, TASKalfa 3212i
Matsuri2	ECOSYS M4132idn, TASKalfa 2510i/ECOSYS M4125idn/P-2540i MFP, TASKalfa 2520i
Hanabi2	ECOSYS M8130cidn, TASKalfa 2460ci/ECOSYS M8124cidn/P-C2480i MFP, TASKalfa 2470ci
Mebius E	ECOSYS M6230cidn/P-C3062i MFP, ECOSYS M6630cidn/P-C3066i MFP, ECOSYS M6235cidn/P-C3562i MFP, ECOSYS M6635cidn/P-C3566i MFP, TASKalfa 351ci
Polaris E	ECOSYS M3660idn, ECOSYS M3655idn, ECOSYS M3145dn, ECOSYS M3645dn, ECOSYS M3145idn, ECOSYS M3645idn
Perseus2	TASKalfa 307ci, TASKalfa 357ci, TASKalfa 407ci

5. Contact

This Software Information was prepared by Software Development Department at KYOCERA Document Solutions Inc. If you have any questions or comments, please contact your local branch.