

Printer Driver User Guide

ECOSYS P4145dn

ECOSYS P4140dn

ECOSYS P4135dn



Legal notes

Unauthorized reproduction of all or part of this guide is prohibited.

The information in this guide is subject to change without notice.

We cannot be held liable for any problems arising from the use of this product, regardless of the information herein.

© 2019 KYOCERA Document Solutions Inc.

Regarding trademarks

Microsoft®, Windows®, and Active Directory® are registered trademarks of Microsoft Corporation in the U.S. and/or other countries.

All other brand and product names herein are registered trademarks or trademarks of their respective companies.

Table of Contents

Chapter 1 Introduction

Document conventions.....	1-2
Supported operating systems.....	1-2

Chapter 2 Installation

The driver.....	2-1
Preparing to install the driver.....	2-1
Saving energy and resources.....	2-2
SNMP settings.....	2-2
Selecting SNMP settings.....	2-2
Data Collection.....	2-3
Express Install.....	2-3
Installing with Express Install.....	2-3
Custom Install.....	2-4
Installing with Custom Install.....	2-5
Creating an installation package for distribution.....	2-6
Installing utilities only.....	2-7
Editing driver properties.....	2-7
Editing utility properties.....	2-8
Upgrade.....	2-8
Upgrading drivers and utilities.....	2-8
Maintenance.....	2-8
Optional printer components.....	2-9
Documents.....	2-9
Uninstall.....	2-9
Uninstalling driver components.....	2-9
Printer driver settings access.....	2-10
Changing the default driver settings.....	2-10

Chapter 3 Driver overview

Online Help.....	3-1
Selecting a PDL in Printing Preferences.....	3-1
Settings list.....	3-2
Print preview.....	3-2
Previewing a print job.....	3-2
The About dialog.....	3-3
Displaying version information.....	3-3
Displaying plug-in information.....	3-3
Improving the software.....	3-3

Chapter 4 Device Settings

Accessing Device Settings.....	4-1
Device options.....	4-1
Setting Device options.....	4-1
Setting up custom boxes.....	4-1
Auto Configure.....	4-2
Enabling auto configuration.....	4-2
Memory.....	4-3
Setting the memory.....	4-3
RAM disk.....	4-3
Setting RAM disk.....	4-4
Administrator Settings.....	4-4
General.....	4-4
Show Quick Print tab.....	4-4
Send Count Information.....	4-4
Send Application name.....	4-5
Associate Profile with application.....	4-5
Password protect administrator settings.....	4-5
Hide Factory Default profile.....	4-6
Hide lower pane.....	4-6
SNMP Settings.....	4-6
SNMPv3 options.....	4-6
Job e-mail notification.....	4-7
Selecting email notification options.....	4-8
Lock Settings.....	4-8
Lock Settings options.....	4-8
Locking driver settings.....	4-9
User Login.....	4-10
User Login options.....	4-10
Printing with User Login.....	4-11
Job Accounting.....	4-11
Job Accounting options.....	4-12
Retrieving an account ID list.....	4-13
Adding or editing an account ID.....	4-13
Printing with Job Accounting.....	4-14
Net Manager.....	4-14
Selecting Net Manager options.....	4-15
Printing with Net Manager.....	4-16
User Settings.....	4-16
Identification.....	4-16
Units.....	4-17
Language preference.....	4-17
Page Description Languages (PDL).....	4-17
PDL options.....	4-18
PDF.....	4-20
PDF options.....	4-21
Compatibility Settings.....	4-22
Media source enumeration.....	4-23
Disabling face-up reverse page order.....	4-23
Ignore application collation.....	4-23
Combine source and media type lists.....	4-24
Rotate mixed paper sizes.....	4-24
Removing a plug-in.....	4-24

Chapter 5 Quick Print

Quick Print options.....	5-1
Orientation.....	5-2
Collate.....	5-2
Duplex.....	5-2
Pages per sheet.....	5-3
EcoPrint.....	5-3
Edit Quick Print Options.....	5-4
Selecting Quick Print options.....	5-4
Profiles.....	5-4
Selecting a profile.....	5-5
Saving a profile.....	5-5
Editing the Factory Default profile.....	5-5
Deleting a profile.....	5-6
Importing a profile.....	5-6
Exporting a profile.....	5-6
Application Based Printing.....	5-6

Chapter 6 Basic

Print size.....	6-1
Page Sizes.....	6-2
Creating a custom page size.....	6-2
Deleting a custom page size.....	6-2
Printing with custom size pages.....	6-3
List Enhancement.....	6-3
Source.....	6-3
Media type.....	6-3
Destination.....	6-4
Copies.....	6-4
Carbon copies.....	6-4
Printing carbon copies.....	6-4
Batch copies.....	6-5
Printing batch copies.....	6-5
Collate.....	6-6
Printing collated documents.....	6-7
Orientation.....	6-7
Duplex.....	6-7
Printing in duplex mode.....	6-8
EcoPrint.....	6-8
Selecting EcoPrint.....	6-9

Chapter 7 Layout

Multiple pages per sheet.....	7-1
Printing multiple pages per sheet.....	7-2
Scaling.....	7-2
Setting scaling on the page.....	7-2
Gutter.....	7-2
Creating a gutter.....	7-3
Poster.....	7-3
Printing a poster.....	7-4
Booklet.....	7-5

Printing a booklet.....	7-6
-------------------------	-----

Chapter 8 Imaging

Print quality and Custom quality.....	8-1
Print quality selection.....	8-1
Font Settings.....	8-2
Font Settings options.....	8-2
Selecting Font Settings.....	8-3
Setting Font Substitution.....	8-3
Disabling device fonts.....	8-4
Graphics Settings.....	8-4
Pattern scaling.....	8-4
Line thinning.....	8-5
Inversion options.....	8-5
Optimization.....	8-6
CIE option.....	8-6
Half Speed Mode.....	8-7
EcoPrint.....	8-7
Selecting EcoPrint.....	8-7
Black and white adjustment.....	8-7
Adjusting black and white settings.....	8-7
Text and graphics effects.....	8-8

Chapter 9 Publishing

Cover mode.....	9-1
Cover mode options.....	9-2
Printing covers.....	9-5
Transparency interleaving.....	9-5
Inserting backing sheets between transparencies.....	9-6
Page insert.....	9-6
Page insertion options.....	9-7
Printing page inserts.....	9-8
Chapter page insert.....	9-8
Printing with Chapter page insert.....	9-8

Chapter 10 Job

Job storage (e-MPS).....	10-1
Job storage (e-MPS) options.....	10-2
Custom box.....	10-2
Storing a job in a Custom box.....	10-3
Quick copy.....	10-3
Printing a Quick copy job.....	10-4
Proof and hold.....	10-4
Printing a Proof and hold job.....	10-5
Private print.....	10-5
Storing a Private print job.....	10-5
Job storage.....	10-6
Storing a Job storage job.....	10-6
User Login.....	10-6
Printing with User Login.....	10-7
Job Accounting.....	10-7
Printing with Job Accounting.....	10-7

Job name.....	10-7
Don't use application name.....	10-8
Overwrite job name.....	10-8
Selecting a job name.....	10-8

Chapter 11 Advanced

Prologue/Epilogue.....	11-1
Insertion point options.....	11-2
Selecting and assigning a Prologue/Epilogue file.....	11-3
Editing a Prologue/Epilogue file.....	11-3
Deleting a Prologue/Epilogue file.....	11-3
Watermark.....	11-3
Adding or editing watermark text.....	11-4
Adding or editing a watermark image.....	11-5
Security Watermark.....	11-5
Adding or editing a security watermark.....	11-6
Status Monitor notification.....	11-8
Setting Status Monitor notification.....	11-8
Viewing Status Monitor.....	11-9
EMF spooling.....	11-9
Selecting EMF spooling.....	11-9
Quiet mode.....	11-10
Enabling client custom paper size.....	11-10
Enabling client profile.....	11-10

1 Introduction

This guide helps you navigate through the Product Library, printer Properties, and Printing Preferences. In the process, it describes the features and settings available for your printer. It also provides instructions on how to install, use, and upgrade the printer driver.



Some features and options may not be applicable to your printer.

This guide is intended for both the system administrators and end users, and contains the following chapters:

Chapter 2 - Installation

Provides instructions on how to install and upgrade the printer driver and utilities.

Guides you through options to run utility programs and access documents such as release notes and the printer *Operation Guide*.

Chapter 3 - Driver overview

Defines the buttons or settings that appear in the lower panel of the Printing Preferences dialog box.

This also provides instructions on how to access and open the Help topics in HTML format.

Chapter 4 - Device Settings

Explains how you can select installed device options so the associated features can be used in the printer driver.

Provides instructions on how to specify Administrator, User, PDL, and Compatibility settings.

Chapter 5 - Quick Print

Explains how you can apply basic print settings to print jobs.

Chapter 6 - Basic

Provides instructions on how to specify the most commonly used printer driver settings.

Chapter 7 - Layout

Explains how you can arrange document data on printed pages without affecting the original document.

Chapter 8 - Imaging

Provides instructions on how to manage print quality and grayscale settings.

Chapter 9 - Publishing

Provides instructions on how to create covers and inserts for a print job, insert sheets between transparencies, and set the first page of every chapter to print on the front side of the paper.

Chapter 10 - Job

Explains how you can store print jobs in the memory installed in your printer.

Chapter 11 - Advanced

Introduces special features that extend the capabilities of your printer.

Document conventions

The following conventions may be used in this guide:

- Menu items and buttons appear in **bold text**.
- Screen, text box, and drop-down menu titles are spelled and punctuated exactly as they appear on the screen.
- Document titles appear in *italics*.
- Icons are used to draw your attention to certain pieces of information. Examples:



This is a NOTE icon. This indicates information that is useful to know.



This is a CAUTION icon. This indicates important information that you need to know, including such things as data loss if the procedure is not done properly.



This is a TIP icon. It indicates a small but useful piece of practical, non-essential information.

Supported operating systems

Refer to the release notes in the Product Library or the readme file that came with the application.

2 Installation

A printer driver is an application that manages communication between the printer and computer.



Some features and options may not be applicable to your printer.

In the Product Library window, there are two methods of installation. Express Install is a quick way to install a driver and certain features in package form. With Custom Install, you select from individual drivers and utilities. Once installed, make sure to configure the printer driver settings in printer Properties and Printing Preferences.

With Upgrade, you can update the driver and utilities to a newer version. This feature is available only if there is a product that needs to be upgraded. In a client/server environment, you can only upgrade older drivers from the server but not from a client computer. For more information, contact your printer dealer.

With Maintenance, you can run certain utilities. You can also access release notes, the printer operation guide, and other materials by selecting **Documents**. With Uninstall, you can remove drivers and utilities.



In Windows operating systems, you must have administrator rights to install the printer driver.

The driver

For Windows 8.1 or later, you can install a driver from the Microsoft Windows Update site if a certified driver is available and the system is connected to the web.

We recommend that you continue to install the driver from the Product Library disk for an expanded feature set. For Windows, if the Found New Hardware Wizard dialog box appears, click **Cancel**. If the Hardware Installation warning dialog box appears, click **Continue Anyway**.

Preparing to install the driver

- 1 Turn on the computer and the printer.
- 2 Insert the Product Library disk into the disk drive.
- 3 Run the installer. You may need to allow the installer to make changes to your computer.



If the installer fails to start, then navigate to the disk drive in File Explorer and run `Setup.exe`.

- 4 Read and accept the license agreement.
- 5 Depending on your system configuration, you may select from a list of available languages.

Saving energy and resources

Printing on both sides of a sheet of paper (duplex mode) reduces paper consumption and helps conserve environmental resources. If your printer supports this feature, we recommend that you set duplex printing as a default setting.

After clicking **Accept** in the license dialog box, depending on your region, a message about resource and energy conservation may appear. Read the message and click **OK**.

After installation is successful, Set Duplex as default appears and is selected on the Finished page. The driver is set to duplex mode by default.

You can make exceptions to the default later by selecting options in the driver Quick Print or Basic tab.

SNMP settings

Simple Network Management Protocol (SNMP) is an application layer protocol that governs the management of device agents and network management systems. Managed devices, such as printers, collect and store management information for the network management systems.

With the SNMP Settings icon, you can specify an SNMP v1/v2 Read community name that is used during printer discovery. This name serves as a password for SNMP communication. The default name is public.

You can also specify support for SNMPv3 encryption and authentication by selecting from the options provided.

If a discovery is in process, or at least one discovered printer has been added to the Devices list, the SNMP Settings icon is unavailable.



SNMP settings selected during installation do not affect selecting SNMP settings in **Printer properties > Device Settings > Administrator > General**.

Selecting SNMP settings

- 1 In the Product Library, select **Express Install** or **Custom Install**.
- 2 Under the printer list, select **SNMP Settings**, and then select from the following options:

Use SNMP v1/v2

Specify a Read community name.

Use SNMP v3

Specify a user name and password, and if necessary, an option for authentication and privacy. To restore the default setting, select **Reset to default**.

3 Select **OK**.



If you specify a different Read community name, then the printer list is cleared. Select **Refresh** to rediscover printers.

Data Collection

With this feature, you can help improve the printer driver software. When enabled, driver data is collected anonymously. You can make this selection during driver installation or at any time by clicking the logo or About button in Device Settings or Printing Preferences.

Express Install

Express Install lets you quickly install the printer, drivers, and utilities through a USB or network connection. You can install one or more features simultaneously.

If the installer cannot find your printer, contact your system administrator.



Depending on your operating system, you must install Microsoft .NET Framework 4.0 or later, to use Status Monitor.

Installing with Express Install



Make sure that your printer and computer are turned on and connected by USB, network, or parallel cable. Parallel connection is available only in some printers.

- 1 In the Product Library, select **Express Install**.
- 2 Select your printer from the list.
If the printer does not appear, then do any of the following:
 - Remove and reinsert both ends of the USB, network, or parallel cable. Select **Refresh** to rediscover printers.
 - In the search box, specify the printer model, IP address, host name, or USB port. If the search finds your printer, then select it.
- 3 To use a host name for the standard TCP/IP port, select **Use host name as port name**. This option is not available with a USB connection.
- 4 Review or modify the list of features.
- 5 Review your selections, and then select **Install**.

6 A Data Collection dialog box appears. Select a participation option, and then select **OK**.

7 When the installation completes, select from the following options:

Print a test page

Test the connection and operation of the printer by printing the *Windows Printer Test Page*.

Set Duplex as default

The driver is set to duplex mode by default. You can make exceptions to the default later by selecting options in the driver Quick Print or Basic tab.

Enable event notification

Allow Status Monitor notification.

Show Quick Print tab

With Quick Print, you can define basic print options into group profiles that can be accessed easily. The Show Quick Print tab option also appears in **Printer properties > Device Settings > Administrator > General**.

Expand this option to select from the following:

- **Set Quick Print tab as default**
- **Set Basic tab as default**
- **Hide other tabs**

8 Select **Finish**.

If the installation fails, then resolve any issues before repeating the process. If necessary, contact your system administrator.

Custom Install

Custom Install refers to detailed printer, driver, and utility installation for a USB, network connection, or parallel connection (available only in some printers). The installer can discover printers that are turned on, and connected by USB or network cable, or you can manually select your printer and port name.

You can add one or more printers from the Devices list to the Products to Install list. You can also install utilities without printers or drivers by selecting **Utilities**.

If you have many computers to update, then you can create a package file (.exe) of all driver and utility components in the Products to Install list by selecting the arrow next to the Install button. Users can run the package on their computers to automatically install the components.

If the installer cannot find your printer, then contact your system administrator.



Depending on your operating system, you must install .NET Framework 4.0 or later, to use Status Monitor.

Installing with Custom Install



Make sure that your printer and computer are turned on and connected by USB, network, or parallel cable. Parallel connection is available only in some printers.

- 1 In the Product Library, select **Custom Install**.
- 2 In Devices, select your printer, and then add it to the Products to Install list. If the printer does not appear, then do any of the following:
 - Remove and reinsert both ends of the USB, network, or parallel cable. Select **Refresh** to rediscover printers.
 - In the search box, specify the printer model, IP address, host name, or USB port. If the search finds your printer, then select it.
 - Select **Add custom device**, and then do the following:
 - a) Select your printer model.
 - b) Select a port name or select **Add Port** to manually configure a port connected to your system.
 - c) Select **OK**.
- 3 In Drivers, select one or more drivers, and then add it to the Products to Install list.
- 4 In Utilities, select one or more utilities, and then add it to the Products to Install list.
- 5 Review your selections in Products to Install.
 - To use a host name for the standard TCP/IP port, select **Use host name as port name**.
- 6 Select **Install**.
- 7 A Data Collection dialog box appears. Select a participation option and click **OK** to continue the installation.
- 8 When the installation completes, select from the following options:



This option is not available with a USB connection or for printers configured using Add custom device.

- Select **Edit** beside an item to modify the available installation options.
- Select **Delete** beside an item to remove it.
- Select **Remove all** to delete all items.

Print a test page

Test the connection and operation of the printer by printing the *Windows Printer Test Page*.

Set Duplex as default

The driver is set to duplex mode by default. You can make exceptions to the default later by selecting options in the driver Quick Print or Basic tab.

Enable event notification

Allow Status Monitor notification.

Show Quick Print tab

With Quick Print, you can define basic print options into group profiles that can be accessed easily. The Show Quick Print tab option also appears in **Printer properties > Device Settings > Administrator > General**.

Expand this option to select from the following:

- **Set Quick Print tab as default**
- **Set Basic tab as default**
- **Hide other tabs**

9 Select **Finish**.

If the installation fails, then resolve any issues before repeating the process. If necessary, contact your system administrator.

Creating an installation package for distribution



Make sure that your printer and computer are turned on and connected by USB, network, or parallel cable. Parallel connection is available only in some printers.

- 1 In the Product Library, select **Custom Install**.
- 2 In Devices, select your printer, and then add it to the Products to Install list.
- 3 Select a driver, and then add it to the Products to Install list.
- 4 In Utilities, select a utility, and then add it to the Products to Install list.
- 5 Select the arrow beside the Install button, and then select **Package**.
- 6 Select **Browse** to specify the destination folder for the package, and then enter a package name.
- 7 Select from the following options:

Silent installation

Create a package that performs installation in the background with no user interface.

Show a notification when errors occur

Enable notification of any errors that may occur during a silent installation. This option is available only if Silent installation is selected.

8 Select **OK > Finish**.

You can distribute the installation package and notify your users of the package name and location.

Installing utilities only**1** In the Product Library, select **Custom Install**.**2** In Utilities, select a utility and add it to the Products to Install list.

A message appears next to a utility if a prerequisite is missing.

3 Review your selections in Products to Install.

- Select **Delete** beside an item to remove it.
- Select **Remove all** to delete all items.

4 Select **Install > Finish**.

If the installation fails, then resolve any issues before repeating the process. If necessary, contact your system administrator.

Editing driver properties**1** In the Product Library, select **Custom Install**.**2** In Devices, select your printer, and then add it to the Products to Install list.**3** In Drivers, select a driver and then add it to the Products to Install list.**4** In Products to Install, select **Edit** beside your printer, and then review or modify the following options:

If more than one drivers are selected, then select each tab to view the options.

- **Printer name**
- **Share the printer**



If this option is selected, then specify a share name.

- **Set as default printer**

5 Select **OK**.

Editing utility properties

- 1 In the Product Library, select **Custom Install**.
- 2 In Utilities, select a utility, and then add it to the Products to Install list.
- 3 In Products to Install, select **Edit** beside applicable utilities.
- 4 Make your selections, and then select **OK**.

Upgrade

The installer can detect outdated driver or utility components on your computer. You can select components and upgrade them to the most recent version. If there are upgrades available, a list appears when you select **Upgrade**.

This feature is not available if the printer has active connections or is shared in Printer properties. In a client/server environment, you can only upgrade older components from the server but not from a client computer. For more information, contact your printer dealer.

Upgrading drivers and utilities

- 1 In the Product Library, select **Upgrade**.
- 2 Select the drivers and utilities to be upgraded on your computer.
- 3 Select **Upgrade > Finish**.

Maintenance

Access any of the following options:



Some options may not be applicable to your printer.

Optional Printer Components

Expand functionality with Help modules in other languages, common printer profiles, plug-in modules, and Net Manager.

Quick Network Setup

Configure the most common network settings.

Maintenance Menu

Adjust features such as print and scan positions.

Configuration Tool

Modify the factory default settings of the printer.

Wi-Fi Setup Tool

Configure the Wi-Fi settings.

Scan to Folder Setup Tool for SMB

Configure Scan to Folder settings.

Optional printer components

Expand the functionality of your printer driver by installing optional components.

Installing optional printer components

- 1 In the Product Library, go to **Maintenance > Optional Printer Components > Run**.
- 2 Select one or more printers, and then select **Next**.
- 3 In Common components, select Help modules in additional languages.
- 4 For each printer, select from the available options:

Common Profiles

Select pre-defined Printing Preferences settings for common use.

Plug-in Modules

Select additional components to enhance driver functionality.

Net Manager

Integrate driver functionality with Net Manager.

- 5 Review your selections, and then select **Install > Finish**.

Documents

Access guides about the driver, utilities, and printer operation. Acrobat Reader 8.0 or later is required to view PDF files.

Uninstall

The uninstaller can find the printer driver components on your computer. It creates a list of those components in the Uninstall window. If you uninstall a driver, then printers using that driver will also be removed from your computer.

Uninstalling driver components

- 1 In the Product Library, select **Uninstall**.
- 2 Select the components to be uninstalled.



Select by printer or expand each item to select individual components. Select or clear all items by choosing **Select all**.

- 3 Select **Uninstall > Finish**. If prompted, restart your computer.

Printer driver settings access

The printer driver software can be accessed from the Print dialog box of an application, or from **Start > Control Panel**. If accessed from an application, then changes made to driver settings remain in effect until the application is closed. If accessed from Control Panel, changes are maintained as the default printer settings.

Changing the default driver settings

- 1 In Control Panel, select **Devices and Printers**.
- 2 Right-click your printer, and then select **Printing preferences**.
- 3 Review and modify the settings, and then select **OK**.

3 Driver overview

Overview images appear in the lower panel of the Printing Preferences dialog box. Each image illustrates different driver settings. Images are changed automatically when some driver settings are selected, or you can click the tabs on the left side to change the image.



If the vertical screen resolution of your computer is 864 pixels or less, the lower panel of the Printing Preferences dialog box does not appear.

- The printer image displays most attached devices. Source and Destination selections are highlighted in green. The storage device icon appears when a job storage option is selected in the Job tab.
- The page image is updated based on page selections made in the Quick Print tab, Basic tab, and Layout tab.
- The grayscale image illustrates grayscale settings selected in the Imaging tab.

The current page description language (PDL) is displayed in all of the images. When printing from an application, you can change the PDL temporarily to enable driver features. Changes to the PDL in Device Settings are maintained as the default driver settings.



Some features and options may not be applicable to your printer.

Online Help

The printer driver software provides settings to customize output from your printer. The printer driver offers user assistance with online Help. When selecting printer driver options, refer to the online Help topics for answers to questions and assistance with problem solving.

To open online Help within the Printing Preferences tabs, Device Settings, and all other dialog boxes, press F1 on your keyboard, or click the question mark icon in the upper right corner and click again in the dialog box.

Selecting a PDL in Printing Preferences

- 1 In the overview image area, click the current page description language (PDL).
- 2 Select from the following PDL options:



Some options may not be applicable to your printer.

- If you select **PCL XL**, you can select **Skip blank pages** and **Smart duplex printing**.

- If you select **PCL 5c/5e**, then **Skip blank pages**, **Smart duplex printing**, and **Data passthrough** are unavailable.
 - If you select **KPDL**, you can select **Skip blank pages**, **Data passthrough**, and **Smart duplex printing**. If you select **Data passthrough**, EMF spooling is unavailable in the Advanced tab. When accessing the printer driver from the application's Print dialog box, Data passthrough is unavailable.
 - If you select **PDF**, you can click **PDF Settings** to open the PDF Settings dialog box.
- 3** To improve the output quality of graphics created by your application, select **GDI compatible mode**.
- When Skip blank pages is set to On or Use layout settings, GDI compatible mode is unavailable.
- 4** Click **OK** in all dialog boxes.

Settings list

The tree view in the lower panel of each tab displays current settings for most driver features. You can scroll down to view features for all driver tabs. As each option is selected, the current selection is displayed in the tree view. You can click the minus (-) or plus (+) sign to hide or show details.

Print preview

The Print preview check box appears in the lower pane of each tab. After selecting driver settings, you can use Print preview to check the print job. Text and images are displayed in the preview, along with any optional Watermark or Security Watermark.

Previewing a print job

- 1** Select preferred driver settings in all tabs, or select a profile.
- 2** In any tab, select **Print preview**.
- 3** Click **OK** in all dialog boxes.
- 4** When the Print preview dialog box appears:
 - Click the arrow buttons to view document pages.
 - Click the magnifying glass icons to zoom in or out.
- 5** To close the preview and make additional changes in driver settings before printing, click the "X" button.
- 6** If you are satisfied with the preview, click the printer button to print the job.

The About dialog

A logo or About button appears in the Device Settings and Printing preferences dialog boxes. Click to open the About dialog box that displays buttons for driver version, driver plug-in information, and Data Collection options for improving the software.

Displaying version information

- 1 In Device Settings or the Printing Preferences dialog box, click the logo or About button, then **Version** to view the following driver information:
 - File Name
 - Version
 - Description
 - Date
 - Manufacturer
 - Comments
- 2 To view copyright information, click **Legal Notices**.
- 3 Click **OK** in all dialog boxes.

Displaying plug-in information

- 1 In Device Settings or the Printing Preferences dialog box, click the logo or About button, then **Plug-in** to view the following plug-in information:
 - Module
 - Description
 - Version
- 2 Click **OK** in all dialog boxes.

Improving the software

- 1 In Device Settings or the Printing Preferences dialog box, click the logo or About button, then **Data Collection**.
- 2 Read the privacy policy and select a participation option.
- 3 Click **OK** in all dialog boxes.

4 Device Settings

In Device Settings, you can select installed printer options so the associated features can be used with the printer driver. You can match the memory setting in the driver with the memory installed in your printer, which lets the driver manage font downloads more efficiently. You can also specify Administrator, User, PDL, and Compatibility settings.



Some features and options may not be applicable to your printer.

Accessing Device Settings

- 1 In Control Panel, select **Devices and Printers**.
- 2 Right-click your printer, and then select **Printer properties > Device Settings**.

Device options

With this feature, you can extend the capabilities of your printer for source, and job storage.

In a client/server environment, this feature is unavailable to a client logged in as a restricted user.

Setting Device options

- 1 In **Device Settings > Device options**, select the check boxes for all installed printer options.
- 2 Select **OK**.

Setting up custom boxes

Custom boxes must be set up in the Hard Disk or SSD Settings dialog box in Device Settings, in order to use this feature in the Job tab. You can create up to 1000 custom boxes for storing print jobs. Custom boxes can be assigned to users who can print the jobs later from the printer operation panel.

- 1 In **Device Settings > Device options**, double-click a storage device.
- 2 Select **Add**, and then modify the following settings:
 - **Box number**
 - **Box name**

- **User name**
- **Shared box**



- When selected, all network users can save jobs in the box.
- When not selected, only the box owner and network administrator can save jobs in the box.

- **Require password**



This option is available only when Shared box is selected.

To add another custom box, repeat this step.

- To edit, select the item in Defined custom boxes, and then modify the settings.
- To import a custom box list, select **Import**, and then browse for a valid .csv or .kxu file.
- To export the current custom box list, select **Export**, complete the details, and then select **Save**. The .csv or .kxu file can be imported into another printer driver.

- 3 Select **OK** in all dialog boxes.

Auto Configure

With this feature, you can detect the devices installed on a printer that is connected to a network. Auto Configure can detect input devices, output devices, storage devices, memory, and RAM disk size. When your computer is connected to the printer through a TCP/IP or WSD port, the Auto Configure button appears in Device Settings. Auto Configure updates the Device options list, Memory, and overview images to keep the driver consistent with the printer configuration.



This feature is not available when your computer is connected to the printer through a USB cable.

Not all installed devices are detected by using Auto Configure. Before selecting **OK** in Device Settings, check the settings to make sure that they are correct.

Silent auto configuration

Silent auto configuration checks the printer every 10 minutes for changes in optional devices or memory. When a change is detected, the driver is automatically updated with the new settings.

In a client/server environment, this feature is unavailable to a client logged in as a restricted user.

Enabling auto configuration

- 1 Verify that all optional devices are attached to the printer, and that it is turned on and ready to print.

- 2 In Device Settings, select **Auto Configure**, and then select from the following options:

Auto Configure Now

Retrieve the current settings from the printer.

Silent auto configuration

Allow the driver to periodically check the printer for any changes in optional devices or memory.

- 3 Select **OK** in all dialog boxes.

Memory

Memory is the amount of standard and optional memory installed in the printer. To maximize the downloading of printer fonts, the driver must be set to match the total printer memory. By default, the Memory setting matches the standard memory in the printer. If optional memory is installed, then set the memory in the printer driver to match the total amount of memory.

Setting the memory

- 1 Install optional memory in your printer.
- 2 In **Device Settings > Memory**, type or select the amount of total installed memory.
If your printer includes the Auto Configure feature, then you can use it to obtain information about the memory size.

RAM disk

Available in some printers, the RAM disk functions as a virtual storage device, saving print requests into the printer memory. Because the RAM disk is temporary memory, all data stored there is lost when the power is turned off. The setting for RAM disk size must match the operation panel setting. The maximum RAM disk size depends on the amount of installed memory.

If selected, the Ignore application collation feature in the Compatibility Settings dialog box lets the driver control collation. The RAM disk can help increase the print speed of collated multiple copies by sending the print job just once.



Depending on your printer, when you select Hard disk or SSD in Device Settings, the RAM disk feature is inactive.

In a client/server environment, this feature is unavailable to a client logged in as a restricted user.

Setting RAM disk

- 1 In **Device Settings > Device options**, select **RAM disk** and then set its size.
- 2 At the printer operation panel, turn on RAM disk and then set its size.



The RAM disk size in both operation panel and Device Settings must match.

Administrator Settings

With this feature, an administrator can set options that include controlling accessibility, displaying features in the interface and setting a password to control access to the Administrator Settings options.

In a client/server environment, this feature is unavailable to a client logged in as a restricted user.

General

In the General tab, an administrator can control the display of the Quick Print tab. Some SNMP settings, a job email notification, and other miscellaneous settings can also be selected.

Show Quick Print tab

With this feature, an administrator can control the display of the Quick Print tab in Printing Preferences. You can define basic print options into group profiles for improved accessibility.

To enable this feature, select **Show Quick Print tab** in **Device Settings > Administrator > General**. When enabled, you can access the following options:

Hide other tabs

Displays only the Quick Print tab to the user.

Set Quick Print tab as default

Opens to this tab when you access Printing Preferences.

Hide Edit Quick Print control

Prevents users from customizing the Quick Print tab.

Send Count Information

With this feature, an administrator can embed count information in the print job, which can be used by some applications for accounting purposes. Count information includes the number of copies produced as well as duplex printing, multiple pages per sheet, and paper size values.

Send Count information is selected automatically when Net Manager is used.

To enable this feature, select **Send Count information** in **Device Settings > Administrator > General**.

Send Application name

With this feature, an administrator can send the application name with a print job, so that a different printing process is used for each application.

This option is unavailable when PDF is selected as the PDL.

To enable this feature, select **Send Application name** in **Device Settings > Administrator > General**.

Associate Profile with application

With this feature, an administrator can associate a profile with an application so that all printing from the application uses the same profile settings. Before using this feature:

- A profile must be created in the Profiles dialog box, accessed from any Printing Preferences tab.
- An association must be created between a profile and an application in the Application Based Printing dialog box, accessed from the Profiles dialog box.

This feature is enabled by default. To disable this feature, clear the **Associate Profile with application** check box in **Device Settings > Administrator > General**.

Password protect administrator settings

With this feature, an administrator can set Password protect administrator settings in the Administrator Settings dialog box to prevent unauthorized changes in this dialog box. If selected, this setting prompts you to enter a password and confirm the password. This password protection blocks access to all Administrator Settings options.

Setting the administrator password

- 1 In **Device Settings > Administrator > General**, select **Password protect administrator settings**.
- 2 Specify and confirm the password, and then select **OK**.

Clearing the administrator password

- 1 In Device Settings, click **Administrator**.
- 2 In the Enter Password dialog box, type the password and click **OK**.
- 3 In the Administrator Settings dialog box, clear the **Password protect administrator settings** check box, and click **OK**.

Hide Factory Default profile

With this feature, an administrator can hide or show the Factory Default profile in the Quick Print tab and the Profiles dialog box.

- With the check box selected, the Factory Default profile does not appear in the lists.
- With the check box cleared, the Factory Default profile appears in the lists.

Hide lower pane

With this feature, an administrator can reduce the size of the Printing Preferences dialog box by hiding the lower pane. The overview images and settings list are removed from view. PDL selection, Profiles buttons, and the Print preview check box are still available.

For some screen display and screen resolution settings, the Hide lower pane check box is selected automatically.

SNMP Settings

Simple Network Management Protocol (SNMP) is an application layer protocol that governs the management of device agents, and network management systems. Managed devices, such as printers, collect and store management information for the network management systems. SNMP security levels are specified by settings in the SNMP settings dialog box. With SNMPv3, encryption and authentication support are provided. SNMP settings must be made in the printer driver and in the printer home page.

The following SNMP options are available:

SNMPv1/v2c

It communicates with the managed device using Read community name and Write community name.

SNMPv3

Security enhancements for authentication and encryption require a user name and password. Authentication and privacy options are available by clicking Settings.

Apply to other models

This option displays a list of installed printers to apply the selected SNMP settings.

SNMPv3 options

You can select **SNMPv3** options for secure communication with the printer.

Authentication

This option provides an algorithm to check that a transferred file has arrived intact. Message Digest 5 (MD5) and Secure Hash Algorithm 1 (SHA1) are hash algorithms used to authenticate packet data.

MD5

This option provides a cryptographic hash function with a 128-bit hash value.

SHA1

This option produces a message digest that is 160 bits long. SHA1 is the successor to MD5.

Privacy

This option uses encryption for secure communication. It is available after you select the **Authentication** option. You may select one **Privacy** option.

DES

This option uses the Data Encryption Standard (DES) for encryption. DES turns cleartext into ciphertext via an encryption algorithm. It encrypts and decrypts data using 8-byte blocks and a 56-bit key.

AES

This option uses the Advanced Encryption Standard (AES) for encryption. AES is a symmetric block cipher that can process data blocks of 128 bits, using cipher keys with lengths of 128, 192, and 256 bits. It is more secure than DES.

Selecting SNMP Settings

- 1** In **Device Settings > Administrator > General**, select **SNMP Settings**.
- 2** Select **SNMPv1/v2c** or **SNMPv3**.
 - For SNMPv1/v2c, specify the **Read community name** and **Write community name**.
 - For SNMPv3, specify the login information.
- 3** To set authentication and privacy options for SNMPv3, click **Settings**.
- 4** In SNMPv3 Settings, select from the available options, and click **OK**.
- 5** In Apply to other models, select from the available printers. The SNMP settings are applied to all selected printers.
- 6** Select **OK**.

Job e-mail notification

When a job is completed, the printer sends an email notification to the specified email address. This is useful when there are multiple jobs in queue and a user must wait for a job to finish.

For a restricted user in a client/server environment, the Administrator button in Device Settings becomes the Identity button. A user can enter email notification data in the Identity Settings dialog box.

Selecting email notification options

- 1 In **Device Settings > Administrator > General**, select **Notify when printing is completed**.
- 2 Choose an email address option:
 - Select **Use specific e-mail address**, and type a valid email address. In a client/server environment, a client user can change this address.
 - Select **Prompt for e-mail address**, and click **OK**. When you click **OK** in the Print dialog box, type a valid email address in the Print Options or Identity Settings dialog box, and click **OK**.
- 3 For some printers, select **Notify when printing is interrupted** if you want to be alerted to a printing problem.
- 4 Click **OK** in all dialog boxes.

Lock Settings

With this feature, an administrator can specify settings at the tab or feature level in the driver, and then lock them. The settings are then applied to all print jobs, and changes are restricted. The settings are locked in **Device Settings > Administrator > Lock Settings**. For example, a driver setting could be set for printing duplex documents. This would save paper, resulting in cost savings and ecological benefits.

Locking a setting will also lock the feature where it appears in other tabs. For example, selecting **Duplex** will also select and lock that feature in the Quick Print and Basic tabs.

The administrator can also set a password that is required to temporarily unlock a feature.

In a client/server environment, this feature is unavailable to a client logged in as a restricted user.

Lock Settings options

The Lock Settings tab displays driver settings that an administrator can lock. Once locked, user changes are restricted and the settings are applied to all print jobs. Once the settings are made, the Password settings option can be accessed. This lets an administrator control usage of paper and toner amounts.

EcoPrint

This option locks the EcoPrint setting selected in the Quick Print, Basic, or Imaging tab.

Duplex

This option locks the current Print on both sides setting selected in the Quick Print or Basic tab.

Multiple pages per sheet

This option locks the current Pages per sheet setting in the Quick Print tab and the Multiple pages per sheet setting in the Layout tab. The Pages per sheet option in the Layout tab is not locked.

Profile with application

This option locks a defined profile of driver settings by application.

Job tab

This option locks settings selected in the Job tab.

Security watermark

This option locks the Security Watermark settings selected in the Advanced tab. Security Watermark is an optional plug-in.

Watermark

This option locks the Watermark settings selected in the Advanced tab.

Password settings

The password set by the administrator locks the selected driver features. When the administrator sets the password, the Unlock icon appears in the driver tabs or the Application Based Printing dialog box. To unlock a feature, click Unlock and type the password.

Locking driver settings

- 1** In **Device Settings > Administrator**, click **Lock Settings**.
- 2** Select the check box for each driver feature to be locked.
- 3** Select the **Password settings** check box if you wish to set a password to temporarily unlock settings.

In the Password Settings dialog box, type a password from 4 to 16 characters. Confirm the password, and click **OK**.

To remove the password, clear the **Password settings** check box. In the Unlock Password dialog box, type the password, and click **OK**.
- 4** To save your Lock Settings selections, click **OK**.

When a password is set, the Unlock icon appears in driver tabs where the locked features appear. To unlock a feature and change its settings temporarily, click **Unlock** and type the password.

User Login

Available in some printers, this feature lets an administrator provide job restriction by user. This is in contrast to the Job accounting feature, which assigns privileges by division or department.

You can create and store up to 100 login user names and passwords in the driver. For some printers, the maximum is 1000.

Users are identified by user name and password. The user name can be in the user principal name UPN format: username@domain.com. This feature limits printing privileges to specified users for secure printing and accounting. The number of pages printed by each user is tracked by the printer.

Users added in the printer driver must also be manually registered at the printer operation panel.

In a client/server environment, some options are unavailable to a client.

For a restricted user in a client/server environment, the Administrator button in Device Settings becomes the Identity button. A user can enter user login data in the Identity Settings dialog box.

User Login options

User login settings selected in the driver are applied to every print job sent from your computer.

Use specific name

This option can be used to specify a name and password to use the same User login for every print job. If this option is selected, the user does not have to type the name and password for each print job.

A client computer in a client/server environment can accept the default name and password set by the administrator or type another name and password. To restore the default values, click **Reset**.

Prompt for name

This option prompts the user for a name and password. You can use a name that is not on the list, and the name is not added to the list. When sending a print job, type a name and password when prompted, and then click **OK** to print.

Login user name

Click to add, delete, edit, import, or export login user names and passwords. Once a Login user name list is created, the list can be exported as a group by saving it as a text file (.csv, .kxc, and .txt). To import a Login user name list, browse for an existing list and save it in your printer driver.

Prompt for name and validate

This option prompts for a name and password. For the job to print, the name and password entered must be on the Login user name list. You can use the login user names entered in the Login user name list of the driver. When sending a print job, type a name and password when prompted, then click

OK to print. This option ensures that the job prints, only after verifying that the selected name is saved in the driver.

Validate user name (computer) or prompt for login user name

This option searches for the Windows User name in the driver's Login user name list. Validation is done every time the user prints a job. If the Windows User name exists in the Login user name list, the associated driver Login user name and password from the list are used for the print job. If the Login user name is not associated with the Windows User name, a message appears to prompt you to enter the Login user name and password you want to be associated with your name.

If a match is not found, the driver checks for administrator or user permissions. With user permissions, the print job is canceled, and the user is prompted to contact an administrator to establish printing permissions. With administrator permissions, the driver prompts for the Login user name and password. Along with the Windows User name, these are then added to the list so succeeding print jobs do not require the user to enter a Login user name and password again.

Printing with User Login

In the printer, after login user names are assigned and user login mode is set to On, you can choose **User login** to print in user login mode.

In a client/server environment, the client is automatically set to the User Login selection made in the server.

- 1** From Device Settings, navigate to:
Administrator Settings > User Login > User Login
- 2** Select a user login option:
 - Use specific name
 - Prompt for name
 - Prompt for name and validate
 - Validate user name (computer) or prompt for login user name



You can only select the last two options if you add or select a user name from the login user name list. Click the buttons to view and manage the list.

- 3** Click **OK** in all dialog boxes.
- 4** Print the document from the application.
- 5** If prompted, type or select a name and password, and click **OK**.

Job Accounting

With Job accounting, account IDs (identification numbers) can be assigned to users or departments. A specific account ID can be assigned, and then required before

printing. You can view and limit the number of copies associated with a specific ID after account IDs are created in the printer operational panel. Account IDs can be a maximum of 8 digits.

You must enable Job accounting on the printer. You can assign up to 100 account IDs on the printer and store in the driver. For some printers, the maximum is 1000.

In a client/server environment, some options are unavailable to a client computer.

For a restricted user in a client/server environment, the Administrator button in Device Settings becomes the Identity button. A user can enter Job Accounting data in the Identity Settings dialog box.



This feature is available only in some printers.

Job Accounting options

Job accounting supports the following options:

Use specific account ID

Select this option to track the print jobs of a user or group with an account ID. It sends the account ID with each print job.

When printing, the user can type a different account ID in the Job tab. This does not change the default account ID that was set in **Administrator > Job Accounting**.

A client computer in a client/server environment can accept the default account ID set by an administrator or type another account ID. To restore the default values, click **Reset**.

Prompt for account ID

Select this option to track the print jobs of a user or group with an account ID as well as prompt for an account ID. At the time a print job is sent, the user is prompted to enter a Job accounting ID.

Account IDs

Add, edit, or delete account IDs from the list. You can store up to 100 account IDs in the driver. For some printers, the maximum is 1000. When connected through a TCP/IP port or WSD port, you can retrieve an account ID list stored on a printer. After an account ID list is created, the list can be exported as a group by saving it as a text file (.csv, .kxc, .txt). To import an account ID list, browse for an existing list and open it.

Prompt for account ID and validate

Select this option to prompt for an account ID that is saved in the driver. When sending a print job, type an account ID when prompted and click **OK** to print. The account ID is validated against the account ID list. If typed incorrectly, you are prompted to type it again.

Display account ID list

Select this option to display the account ID list at the time of printing. The print job can be assigned to a user or group. The account ID list is stored in the driver and more than one ID must be established for the list to appear.

Validate user name (computer) or prompt for account ID

This option searches for the Windows User name in the driver's Account IDs list. Validation is done every time the user prints a job. If the Windows User name exists in the Account IDs list, the associated driver account ID from the list is used for the print job. If the Account ID is not associated with the Windows User name, a message appears to prompt you to enter the Account ID you want associated with your user name.

If a match is not found, the driver checks for administrator or user permissions. With user permissions, the print job is canceled, and the user is prompted to contact an administrator to establish printing permissions. With administrator permissions, the driver prompts for the account ID. Along with the Windows User name, this is then added to the list so succeeding print jobs do not require the user to enter an account ID again.

Retrieving an account ID list

- 1 In **Device Settings > Administrator > Job Accounting**, select **Job Accounting**, and click **Retrieve**.
- 2 In the Retrieve Job Accounting List dialog box, enter a user name and password, and then select the authentication type.
- 3 Click **OK**.

The retrieved account ID list replaces the existing list.

Adding or editing an account ID

- 1 In **Device Settings > Administrator > Job Accounting**, select **Job accounting**.
 - To create an account ID, click **Add**.
 - To edit an existing account ID, select it from the list and click **Edit**.
- 2 Under Account ID, enter a number to a maximum of 8 digits.
- 3 Under Description, enter a description of the account ID, such as a user or group.
- 4 Under User name, enter a Windows user name, to a maximum of 20 characters. The user name is not case-sensitive.
- 5 Click **Add** to add the name to the user names (computer) list.
- 6 To remove an account ID from the list, select it and click **Delete**.

- 7 Click **OK**.

Printing with Job Accounting

- 1 From Device Settings, navigate to:
Administrator > Job Accounting > Job accounting
- 2 Select one of the following options:
 - Use specific account ID
 - Prompt for account ID
 - Prompt for account ID and validate
 - Display account ID list
 - Validate user name (computer) or prompt for account ID



You can only select the last three options if you add or select an account ID from the account ID list. Click the buttons to view and manage the list.

- 3 Click **OK** in all dialog boxes.
- 4 Print the document from the application.
- 5 If prompted, type or select an account ID, and click **OK**.

Net Manager

Net Manager is a server-based application that provides centralized user authentication, authorization, user access control, and secure pull printing features. This application is an optional component of the printer driver, and must be installed separately. For the application to interact with the printer driver, go to **Device Settings > Administrator**, and then configure the settings in **Net Manager**.

An administrator can set the application server and user information for users and groups to print according to defined policies. When Auto detect site server address is selected, Server becomes Master server. You can enter the master server address, and the site server is automatically retrieved for authentication. This allows network printing at any company location without changing the server address each time.

When policies restrict printing features, this application reconfigures the printer driver so that the restricted printing features are unavailable to the user or group. The application options let you choose how conflicts are handled between a policy and a driver selection.

For enhanced security, you can use a registered User Login name as the application user name. The User Login password is not required. When this feature is used, the application options are not available.

With secure pull printing, you can select the printer that will print after sending the job. To use the secure pull printing feature, the driver must be connected to the application

spooler server using the spooler port. Print jobs are held in the application spooler server until the user is authenticated on the printer.

For a restricted user in a client/server environment, the Administrator button in Device Settings becomes the Identity button. A user can enter application data in the Identity Settings dialog box. If you select **Use Windows authentication**, the Identity button cannot be used.

Selecting Net Manager options

- 1 In **Device Settings > Administrator > Net Manager**, select either of the following:

Use the user login as the Net Manager user name

If you select this option, proceed to step 7.

When you click Print, you can enter a registered User Login name in the Print Options or Identity Settings dialog box. The print job is sent to the Net Manager server.

Net Manager

If you select this option, proceed to step 2.

- 2 Enter the server address.

If site servers are managed by the master server, select **Auto detect site server address**. Under Master server, enter the master server address.

- 3 Enter the port number. The default port number is 9094.

- 4 Select an authentication option:

Use Windows authentication

Select to use Windows login information for Net Manager authentication. The Net Manager Login dialog box does not appear during printing unless Windows authentication fails. If you select this option, proceed to step 6.

In a workgroup environment, Use Windows authentication cannot be used.

Use specific name

Select to enter specific login information. If you select this option, proceed to step 5.

- 5 Type the Login user name and Password. The Login user name can be in the user principal name (UPN) format to support multiple domains: `username@domain.com`

- 6 To prevent messages from appearing when policy conflicts occur during printing, select **No notifications for policy conflicts**. When enabled, select either of the following:

Continue printing

Apply the policy and print the job

Cancel printing

Cancel the print job

- 7 Click **OK** in all dialog boxes.

Printing with Net Manager

- 1 From the application, open the Print dialog box. Click **Preferences** or **Properties** to open the Properties dialog box and view printing restrictions set by the policy.
- 2 If the Net Manager Login or Identity Settings dialog box appears, enter a Login user name and password. This dialog box is generated when an invalid or blank Net Manager user name or password is set in the driver. The Net Manager Login dialog box does not appear if Use Windows authentication is selected in **Administrator > Net Manager**, except when the Windows authentication fails.
- 3 You can click **Do not ask again** to use the most recently-saved Login user name and password for each print job. When selected, the Net Manager Login dialog box does not appear again.
- 4 Click **Log in** to send the print job to the Net Manager spooler server, where the Login user name and password are authenticated.
The print job appears on the Job tab on the main Net Manager web application.
- 5 Depending on the Net Manager settings and before the job is printed, the Print Options dialog box appears with information about your print quota. Click **OK** to continue.
- 6 On the printer operation panel, enter your authentication credentials to release spool jobs. You can print from any printer managed by the Net Manager server.

User Settings

With this feature, you can specify user and department names, select the default unit of measure, and change the driver display language.

In a client/server environment, Department and Units are unavailable to a client logged in as a restricted user. User name and Language preference can be changed.

Identification

With this feature, you can identify your print job with a User name and Department name, to a maximum of 31 characters. Double-byte characters are supported. The User name can be used to identify a print job stored on the storage device.

In a client/server environment, a client user can change the User name. This does not change the default user name selection on the server.

Setting user identification

- 1 In **Device Settings > User**, type your preferred name in the User name text box.
- 2 Type your department or group name in the Department text box.
You can type a maximum of 31 characters in the User name and Department text boxes.
- 3 Click **OK** in all dialog boxes.

Units

With this feature, you can set **Inches** or **Millimeters** as the unit of measurement. This is used for the following settings:

- Page Sizes settings in the Basic tab
- Spacing setting in the Add Watermark and Edit Watermark dialog boxes in the Advanced tab
- Poster settings in the Layout tab
- Gutter settings in the Layout

Selecting a unit of measurement

- 1 In **Device Settings > User**, select **Inches** or **Millimeters**.
- 2 Click **OK** in all dialog boxes.

Language preference

With this feature, you can specify the user interface language of Device Settings in printer Properties and all tabs of Printing Preferences.

Available languages vary depending on your locale and your computer settings.

Setting Language preference

- 1 In **Device Settings > User**, select the preferred language from the Select language list.
- 2 Click **OK** in all dialog boxes.

Page Description Languages (PDL)

With this feature, you can specify the contents and layout of a printed page. In Device Settings, you can set the PDL to any of the following:

- PCL XL
- PCL 5c/5e
- KPD

- PDF



PDF appears only if Output to PDF plug-in is installed. The printer default is PCL XL, which is suitable for most printing purposes.

After you select a PDL, the selection appears in the lower corner of the overview image in Device Settings and in all Printing Preferences tabs. You can change the PDL temporarily from any Printing Preferences tab.

If GDI compatible mode is selected, vector graphics are rasterized for printing as bitmap images. Use this option to improve the output quality of the graphic created by the application.

In a client/server environment, a restricted user cannot access this feature.

PDL options

The PDL options, available in the Page Description Languages (PDL) dialog box, are accessed in Device Settings.

PCL XL

The most recent version of HP PCL and PCL 6. This PDL includes PCL 5c/5e features. PCL XL lacks backward compatibility with earlier PCL versions, though it is enhanced over PCL 5c/5e in these areas:

- Reduced file size
- Better print speed
- Faster return to application
- Supports Security watermark
- Supports Line thinning

PCL 5c/5e

- Fully compatible with earlier PCL versions
- Bidirectional communication support
- Wide selection of fonts for use with Microsoft Windows applications
- Complex graphics might not print as well
- Start of the page/End of the page available in Prologue/Epilogue

KPDL

KPDL is used when printing from applications that support PostScript 2 or 3.

- An emulation of PostScript printing
- Strong graphics reproduction
- Print speeds may be slower than PCL 5c/5e
- Requires more printer memory than PCL 5c/5e
- Enables native TrueType font downloading
- Supports most Graphics settings options
- EMF Spooling unavailable when Data passthrough is selected

PDF

Output to PDF is a plug-in that lets you print or save documents from multiple sources to Adobe Portable Document Format (PDF). The PDF format is independent of the operating system and application software used to create documents.

- An alternative to existing commercial applications for creating PDF documents
- Retains original document appearance
- Can be viewed and printed on operating systems that display PDF content
- Some driver features unavailable

PDL settings

For some page description languages, additional settings are available in the Page Description Languages (PDL) dialog box.

PCL XL settings

Skip blank pages

This option prevents the printer from outputting any page that contains no data, or that has, at most, one space character. Selecting this option can save paper, and result in comparatively faster printing times.

- Select **Off** to print all pages, including blank pages.
- Select **On** to skip all blank pages.
- Select **Use layout settings** to print all pages when Booklet, Duplex, or Multiple pages per sheet feature is used. Otherwise, blank pages are skipped.

Smart duplex printing

This option automatically keeps a sheet of paper from being sent through the duplex unit if the sheet is only printed on one side. The duplex unit is bypassed for the following types of print jobs: a one-page document, one page from a multi-page document, or a multi-page document that prints onto a single sheet. Selecting this option can reduce wear on the mechanical duplex unit, and result in comparatively faster printing times.

KPDL settings

Skip blank pages

This option prevents the printer from outputting any page that contains no data, or that has, at most, one space character. Selecting this option can save paper, and result in comparatively faster printing times.

- Select **Off** to print all pages, including blank pages.
- Select **On** to skip all blank pages.
- Select **Use layout settings** to print all pages when Booklet, Duplex, or Multiple pages per sheet feature is used. Otherwise, blank pages are skipped.

Smart duplex printing

This option automatically keeps a sheet of paper from being sent through the duplex unit if the sheet is only printed on one side. The duplex unit is bypassed for the following types of print jobs: a one-page document, one page from a multi-page document, or a multi-page document that prints onto a single sheet. Selecting this option can reduce wear on the mechanical duplex unit, and result in comparatively faster printing times.

Data passthrough

This option reduces errors when printing complex jobs from applications that use PostScript formatting. When selected, EMF spooling is unavailable in the Advanced tab.

PDF settings

Provides options for printing and saving documents to Adobe PDF format. See PDF topics for details.

Selecting a PDL in Device Settings

- 1 In **Device Settings > PDL**, select the preferred page description language from the Available languages list.



Some options may not be applicable to your printer.

- If you select **PCL XL**, you can select **Skip blank pages** and **Smart duplex printing**.
 - If you select **PCL 5c/5e**, then **Skip blank pages**, **Smart duplex printing**, and **Data passthrough** are unavailable.
 - If you select **KPDL**, you can select **Skip blank pages**, **Data passthrough**, and **Smart duplex printing**. If you select **Data passthrough**, EMF spooling is unavailable in the Advanced tab. When accessing the printer driver from the application's Print dialog box, Data passthrough is unavailable.
 - If you select **PDF**, you can click **PDF Settings** to open the PDF Settings dialog box.
- 2 To improve the output quality of graphics created by your application, select **GDI compatible mode**.

When Skip blank pages is set to On or Use layout settings, GDI compatible mode is unavailable.
 - 3 Click **OK** in all dialog boxes.

PDF

With this plug-in feature, you can print and save documents from multiple sources to Adobe PDF format. This feature can be used as an alternative to existing commercial applications for creating PDF documents. Documents saved as PDF retain their original appearance, and can be viewed and printed on operating systems that display PDF content.

For a document using mixed paper sizes, all pages in the PDF use the size of the first page.



With PDF selected as the PDL, only a limited set of driver options are available.

PDF options

You can select PDF options if you have installed the Output to PDF plug-in. The following options are available in the PDF Settings dialog box:

Embed fonts

This option ensures that document fonts appear accurately in the PDF file on the screen. This option ensures accurate reproduction but significantly increases the file size.

Compress data

This option enables flat compression for the generated PDF document. This option significantly reduces the file size.

Print and save options

From the list, select whether to print (Print only), save a PDF file (Save to file), or both (Print and save). If a save option is selected, additional options are available in the PDF Settings dialog box.

Save as color

This option saves the PDF as a color document. This option does not appear when Print only is selected.

Automatically save to default folder

Select to save a PDF file automatically in a default folder. Browse to a location to save your PDF file.

Date and time

- Select the check box to use the same file name plus the current date and time whenever the file is saved.
- Clear the check box to replace an existing file, if a file with the same name already exists.

Encryption

Encryption adds the selected level of encryption to the PDF. When selected, password protection is available so that a document cannot be opened or altered by unauthorized users.

Arc4 40

This encryption option provides low-level security for a PDF document. This option supports Adobe Acrobat and Adobe Reader 6.0 or earlier.

Arc4 128

This encryption option provides low-level security for a PDF document. This option supports Adobe Acrobat and Adobe Reader 6.0 and later.

AES 128

This encryption option provides high-level security for a PDF document. This option supports Adobe Acrobat and Adobe Reader 7.0 and later.

AES 256

This encryption option provides high-level security for a PDF document. This option supports Adobe Acrobat and Adobe Reader 9.0 and later.

Password protection

Select passwords for changing security settings and for opening a document. Passwords are supported to a maximum of 16 characters.

Change security settings

Select the check box and type an owner password. Within Adobe Acrobat, this password is required to change the document restrictions set in the security section of the PDF. When a document with this password is opened in Adobe Reader, it cannot be printed or edited, and document data cannot be copied.

Open document

Select the check box and type a user password. The user password must be entered at the time the PDF document is opened. This password must be different from the owner password.

Printing and saving to PDF

- 1** In **Device Settings > PDL**, in the Available languages list, select **PDF**.
- 2** Click **PDF Settings**.
- 3** In the PDF Settings dialog box, under Print and save options, select whether to print, save, or both.
If a save option is selected, select additional folder, encryption, and password options.
- 4** Click **OK** in all dialog boxes.
- 5** Open and print the document.
- 6** Name and save the PDF file.

Compatibility Settings

With this feature, you can specify media source values, override the application's Collate setting, and combine the Source and Media type lists in the Basic tab.

For some printers, you can also align mixed paper sizes and disable reverse order printing for face-up output.

In a client/server environment, this feature is unavailable to a client logged in as a restricted user.

To restore all the options in the Compatibility Settings dialog box to default, click **Reset**.

Media source enumeration

Media source enumeration supports compatibility for media source values unique to the printer driver, such as those for cassettes or feeders. Your newly installed printer driver maintains identical media source support with the driver it replaces, whether for this driver or one from another manufacturer. If media source macros exist for the older driver, then the alignment of media source values maintains support without the need to change the macros.

Use the Driver Info utility (from the top-level folder or \ProductLib, navigate to \Utility \Driver Info\DrvInfo.exe) to compare the source values for all installed drivers.

If the values for a given media source differ between printer drivers, you can reassign an enumerated value to create a match between the drivers.

Setting media sources

- 1 In **Device Settings > Compatibility**, from the Media source enumeration list select the paper supply method. The current value is listed in the Enumerated value box.
- 2 Type an **Enumerated value** for the media source, and click **Apply**. To align settings with a different driver, this value should align with those in the other driver.
- 3 Click **OK** in all dialog boxes.

Disabling face-up reverse page order

Available in some printers, the Disable face-up reverse page order feature can produce the first page of a face-up job on top and the last page on the bottom.

- 1 In **Device Settings > Compatibility**, select **Disable face-up reverse page order**.
- 2 Click **OK** in all dialog boxes.

Ignore application collation

With this feature, you can bypass the Collate setting in software applications, and gives priority to the printer driver setting.

- With the check box selected, the printer driver Collate setting is used.
- With the check box cleared, the application Collate setting is used.

Selecting printer driver collation

- 1 In **Device Settings > Compatibility**, select **Ignore application collation**.
- 2 Click **OK** in all dialog boxes.

Combine source and media type lists

With this feature, you can change the driver's Basic tab so that Media type and Source are combined into one list, labeled Source. In the combined list, Media types are listed first, followed by cassettes and multipurpose tray.

Creating a combined source list

- 1 In **Device Settings > Compatibility**, select **Combine source and media type lists**.
- 2 Click **OK** in all dialog boxes.

Rotate mixed paper sizes

For some page size combinations, document data on the different page sizes might be printed in opposite directions. This can happen if the larger paper size has Landscape orientation. Selecting this feature rotates data on the larger pages so that the print direction is the same for both page sizes.

Aligning mixed paper sizes

- 1 In **Device Settings > Compatibility**, select **Rotate mixed paper sizes**.
- 2 Click **OK** in all dialog boxes.

Removing a plug-in

You can remove an installed plug-in from the driver. If removed, the plug-in features do not appear in the driver interface.



To remove the Output to PDF module, PDF must not be selected as the PDL.

- 1 In Device Settings, click the logo or About button, then **Plug-in**.
- 2 Select a plug-in module from the list, and click **Delete**, then **Yes**.
- 3 Click **OK** in all dialog boxes.

5 Quick Print

In the Quick Print tab, you can apply basic print settings to print jobs. You can select options quickly in a simple user interface.

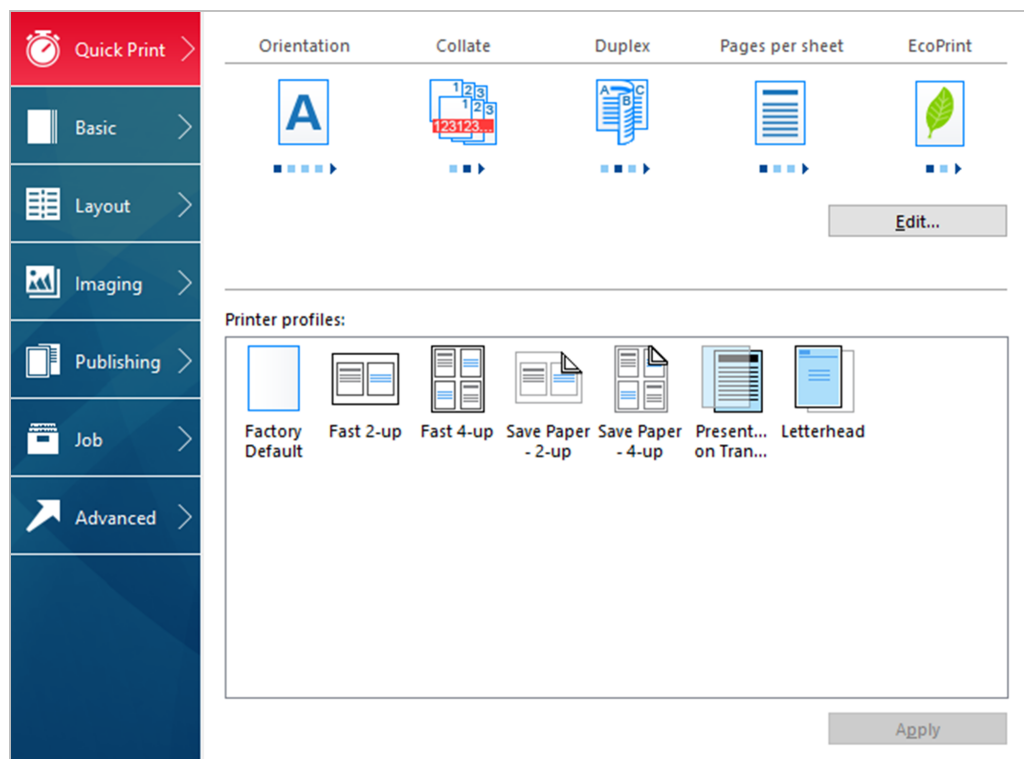
Any Quick Print settings can be saved as a group, called a profile, and applied to any print job. Profiles support common printing tasks.

To return to the original settings, click **Reset**. The Reset button is available when accessing the printer driver from the application's Print dialog box.

The administrator can set the view of the Quick Print tab through the Installation process, or in **Device Settings > Administrator**.



Some features and options may not be applicable to your printer.



Quick Print options

You can set up to five print options on the Quick Print tab. You can create your own customized view of print options with Edit Quick Print Options. You can also select from profiles that have been set with predefined options for frequently run print jobs.

Orientation

With this feature, you can specify the paper orientation of the print job. Click the **Orientation** icon repeatedly to change between Portrait, Landscape, Rotated portrait, and Rotated landscape printing formats. The rotated options rotate the job orientation 180 degrees.

Orientation also appears in the Basic tab. Changes in Quick Print or Basic tab are reflected in the other tab.

Collate

With this feature, you can specify the order in which the pages of a multiple copy job are printed.

Click the **Collate** icon to change between On, Off, On (reverse order), and Off (reverse order). Reverse order options are available only in some printers.

With On selected, the first time the print job is sent to the printer, the data is rendered as page images in the printer memory. The remaining job copies are printed from the stored data. This avoids the extra processing involved in sending every copy from the computer to the printer.

With On selected, the driver prints the complete job set by set (123, 123). With Off selected, it prints each page by set (111, 222). For example, with On selected, three copies of a five-page document outputs as pages one through five in succession, three times.

The printer driver automatically overrides the application's Collate setting and uses the printer driver setting. You can use the application's Collate setting by clearing the Ignore application collation check box in the Compatibility Settings dialog box accessed from Device Settings.

For some printer, if On (reverse order) or Off (reverse order) is selected, the printed pages appear in reverse order. These options are available when Printer default is not selected under Destination in the Basic tab. For some printers with a face-up destination, Off (reverse order) can be disabled in **Device Settings > Compatibility**.

Collate also appears in the Basic tab. Changes in the Quick Print or Basic tab are reflected in the other tab.

Duplex

With this feature, you can print on both sides of each page. A duplex unit can turn the paper over to allow printing on the reverse side. Click the **Duplex** icon to change between the following options:

Off

Disable duplex printing.

Flip on long edge

Turn the long edge of the page to view the content.

Flip on short edge

Turn the short edge of the page to view the content.



If Set Duplex as default is selected in the Product Library during installation, then Flip on long edge is automatically selected.

When the document contains blank pages and you do not want to include them in the print job, under **Page Description Languages (PDL) > Skip blank pages**, select **On**. To include the blank pages in the print job, select **Off** or **Use layout settings**.

Duplex should be turned on before using Lock Settings. When Duplex is turned off, using Lock Settings makes it unavailable to all users.

An administrator can ensure that all jobs are printed on both sides by selecting **Duplex** in **Device Settings > Administrator > Lock Settings**.

Duplex also appears in the Basic tab. Changes in Quick Print or Basic tab are reflected in the other tab.

Pages per sheet

With this feature, you can print several pages on a single sheet of paper for the purpose of reviewing the document and conserving paper. The size and readability of the multiple pages decrease as the number of pages per sheet is increased. Click the **Pages per sheet** icon repeatedly to change between 2 pages per sheet, 4 pages per sheet, and Off.

This feature also appears as Multiple pages per sheet in the Layout tab. You can select additional pages per sheet, set the arrangement of the pages, and print borders around each of the pages.

When Pages per sheet is selected, Scaling and Poster are unavailable in the Layout tab.

When the document contains blank pages and you do not want to include them in the print job, under **Page Description Languages (PDL) > Skip blank pages**, select **On**. To include the blank pages in the print job, select **Off** or **Use layout settings**.

Pages per sheet should be turned on before using Lock Settings. When Pages per sheet is turned off, using Lock Settings makes it unavailable to all users.

An administrator can ensure that all jobs are printed with multiple pages on a sheet by selecting **Multiple pages per sheet** in **Device Settings > Administrator > Lock Settings**.

EcoPrint

With this feature, you can change the text and graphics to appear lighter in the print job. EcoPrint does not increase print speed. Click the **EcoPrint** icon to change between On and Off.

EcoPrint also appears in the Basic tab and in the Imaging tab. Changes in Quick Print, Basic, or Imaging tab are reflected in the other tabs.

EcoPrint should be turned on before using Lock Settings. When EcoPrint is turned off, using Lock Settings makes it unavailable to all users.

An administrator can ensure that all jobs are printed in EcoPrint mode by selecting **EcoPrint** in **Device Settings > Administrator > Lock Settings**.

Edit Quick Print Options

The assortment of icons at the top of the Quick Print tab can be customized to include features that you use most often. Any number of icons from 0 to 5 can be displayed. All icons can be removed from view if you want to use only the Printer profiles options in the Quick Print tab.



An administrator can hide the Edit button by selecting **Hide Edit Quick Print control** in **Device Settings > Administrator**. The Edit button is unavailable when the driver is accessed from an application's Print dialog box.

Selecting Quick Print options

- 1 In Control Panel, select **Devices and Printers**.
- 2 Right-click your printer, and then click **Printing preferences**.
- 3 Select the **Quick Print** tab and click **Edit**.
- 4 In the Edit Quick Print Options dialog box, add or remove a feature to the Quick Print tab:
 - To add, select the feature under Available, and click the arrow to move the feature to Selected. A maximum of 5 features appear under Selected.
 - To remove, select the feature under Selected, and click the arrow to move the feature to Available. To use only the Printer profiles in the Quick Print tab, move all features to Available.
 - To change the position of the features under Selected, click the up or down arrow. The feature at the top appears first in the Quick Print tab.
 - To restore the list to factory default options, click **Reset**.
- 5 Click **OK**.

Profiles

With this feature, you can save printer driver settings as a profile. You can select multiple options in the Quick Print and other Printing Preferences tabs, save them to a profile, and use all of them at once when you apply the profile. You can then use that profile to print the same type of print job again without having to reselect all the settings. In Printing Preferences, the Save As and Profiles buttons appear at the bottom of all tabs.

In **Device Settings > Administrator**, you can choose to display or hide the Factory Default profile. Settings made in Device Settings cannot be saved to a profile. To reset

the printer driver to the default settings, select the Factory Default profile, and then click **Apply**.



You can edit only the Factory Default profile. Other profiles cannot be edited, but can be deleted, imported, or exported.

In a client/server environment, a client can choose between client profiles or server profiles. The client is automatically set to the default profiles made in the server. In the Advanced tab, select or clear the **Enable client profile** check box.

Selecting a profile

- 1 Do either of the following:
 - From the Quick Print tab, select a profile.
 - From any Printing Preferences tab, click **Profiles**, and then select a profile.The settings list shows a summary of settings for that profile.
- 2 Click **Apply**, then **OK**.

Saving a profile

- 1 Set the printing options you want for your print job by opening Printing Preferences and selecting all your driver settings.
- 2 In any tab, do either of the following:
 - Click **Save As**.
 - Click **Profiles**, then **Save**.
- 3 Type the name of the profile, select an icon, and then type a description.
- 4 Click **OK**.

The newly added profile appears in the Profiles dialog box and Quick Print tab.

Editing the Factory Default profile

- 1 In any tab, click **Profiles**.
- 2 In the Select profile section, select the Factory Default profile, and click **Edit**.
- 3 You can edit any of the three options: **Name**, **Icon**, and **Description**.
- 4 Click **OK** to save the edited changes.

The newly edited profile appears in the Profiles dialog box and the Quick Print tab.
- 5 Click **Apply** to use the selected Factory Default profile in the current print job, or click **OK** to close the dialog box.

Deleting a profile

- 1 In any tab, click **Profiles**.
- 2 In the Select profile section, select the profile to be deleted, and click **Delete**.
- 3 In the delete confirmation box, click **Yes** to accept.
- 4 Click **Close** to close the Profiles dialog box.

Importing a profile

- 1 In any tab, click **Profiles**, then **Import**.
- 2 Browse for an existing profile (.kxp), select it, and click **Open**.

A message appears if any of the profile settings in the imported file are unavailable in the existing driver. Select **Yes** to import the profile, or **No** to cancel the import.

If you selected Yes, the newly imported profile appears in the Profiles dialog box.
- 3 Click **Apply** to use the selected profile for the current print job, or click **OK** to close the dialog box.

The newly added profile appears in the Quick Print tab.

Exporting a profile

- 1 In any tab, click **Profiles**.
- 2 In the Select profile section, select the profile to be exported, and click **Export**.
- 3 In the Export Profile dialog box, name and save the profile.
- 4 Click **OK** to close the Profiles dialog box.

Application Based Printing

With this feature, an administrator can associate a profile with an application so that all printing from the application uses the same profile settings. This makes profiles easier to use and ensures consistent printing from an application. For example, a duplex printing profile can be applied to all spreadsheet printing to save paper, or reports in Microsoft Word can be set to print with consistent stapling and print quality.

Associations between profiles and applications can be created at any time in the Application Based Printing dialog box, accessed from the Profiles dialog box. A maximum of 25 associations can be created. To use the associations in printing, you

must select **Associate Profile with application** in **Device Settings > Administrator > General**.

In a client/server environment, a user on a client computer can view details about server associations but cannot change settings or select another profile.

An administrator can ensure that all jobs from an application are printed with an associated profile by selecting **Profile with application** in **Device Settings > Administrator > Lock Settings**.

Adding an association

- 1 In any tab, click **Profiles**.
- 2 In the Profiles dialog box, click **Application**.
- 3 In the Application Based Printing dialog box, click **Add**.
- 4 In the Add Association dialog box, enter a name for the association.
- 5 Under Select application, choose an application by one of the following methods:
 - Select **Application name**, and select an installed application from the list.
 - Select **Filename (*.exe)**, and enter a valid executable file name (.exe) for an application that allows printing, or click **Browse** to find a file located on your computer.
- 6 Under Select profile, select a profile from the list.
- 7 Click **OK** in all dialog boxes.

Deleting an association

- 1 In any tab, click **Profiles**.
- 2 In the Profiles dialog box, click **Application**.
- 3 In the Application Based Printing dialog box, select the association to be deleted, and click **Delete**.
- 4 In the confirmation box, click **OK** to accept.
- 5 Click **OK** in all dialog boxes.

Editing an association

- 1 In any tab, click **Profiles**.
- 2 In the Profiles dialog box, click **Application**.

- 3 In the Application Based Printing dialog box, select the association to be edited and click **Edit**.
- 4 In the Edit Association dialog box, you can change the settings under Association name, Select application, or Select profile.
- 5 Click **OK** in all dialog boxes.

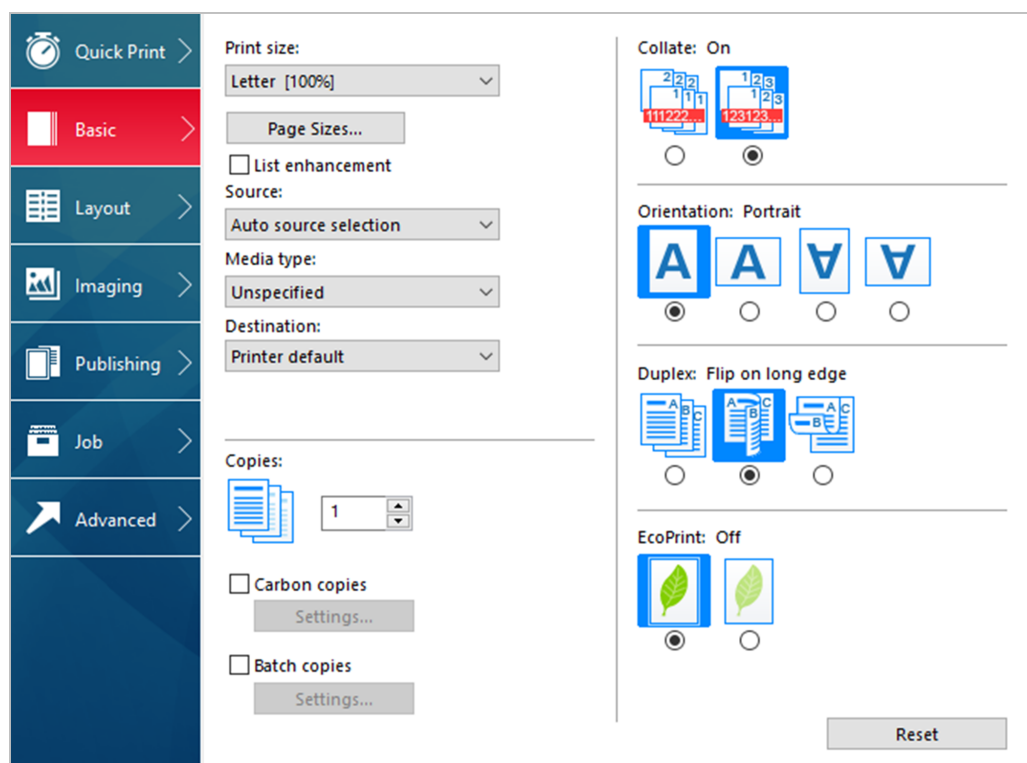
6 Basic

In the Basic tab, you can specify the most commonly used printer driver settings.

To return to the original settings, click **Reset**. The Reset button is available when accessing the printer driver from the application's Print dialog box.



Some features and options may not be applicable to your printer.



Print size

With this feature, you can select the output size of the document. To use this setting, ensure that the Page Sizes setting matches the page size setting in your application. If the print size is different from the page size in your application, then each page is enlarged or reduced to match the print size.

The percentage value shown in brackets indicates the size of the print size setting relative to the page size setting.

When any envelope size is selected, a message appears, and Envelope is automatically selected as the media type.

Page Sizes

With this feature, you can choose the document size in the application. Once selected, the Print size list displays the percentage value of the print size setting relative to the page size setting.



For some printers, when a large page size (A0, A1, A2, B1, B2, B3) is selected, the scaling percentage may be less than 20%. A message appears stating that the print result is not guaranteed. The Poster feature in the Layout tab is unavailable for large page sizes.

You can create a page size with your chosen dimensions for printing on non-standard size paper. You can then save the custom setting to the Page Sizes and Print size lists for later selection.

In a client/server environment, a client can select between client custom page sizes and server custom page sizes. In the Advanced tab, select or clear the **Enable client custom paper size** check box.

The Page Sizes dialog box displays the unit of measurement in inches or millimeters. You can change the unit setting in the User Settings dialog box by accessing **Device Settings > User**. In a client/server environment, the unit setting is unavailable to the client computer.

Creating a custom page size

- 1 In the Basic tab, click **Page Sizes**.
- 2 In the Page Sizes dialog box, click **New**.
- 3 A default custom name appears in the Name box. Type a name for your custom page size.
- 4 Type or select values for the short edge and long edge. If a typed value exceeds the allowable limit, it automatically adjusts to the limit.
- 5 When finished, click **Save**.
- 6 Click **OK** to close the Page Sizes dialog box.

The custom page size appears in the Print size list, which is used for enlarging and reducing the sizes of prints.

Deleting a custom page size

- 1 In the Basic tab, click **Page Sizes**.
- 2 In the Page Sizes dialog box, select the custom size to delete.
- 3 Click **Delete**.

- 4 Click **OK** to close the Page Sizes dialog box.

Printing with custom size pages

- 1 Load custom-sized paper into the multipurpose tray.
- 2 In the Basic tab, select the name of your custom page size in the Print size list.
- 3 Click **OK** in all dialog boxes.

List Enhancement

With List enhancement, you can view a list of commonly used print sizes and page sizes. The sizes frequently used in printing appear at the top of the list. The printer driver determines the preferred print size and page size. For mixed-paper documents, the driver uses only the first page of the document. To reset the Print Size and Page Size lists to the default arrangement, clear the **List enhancement** check box. In a client/server environment, selecting List enhancement in the server does not affect the client settings.



Custom paper sizes are not included in the sorting of Print Size and Page Size.

Source

With this feature, you can specify the tray or cassette that supplies paper for a print job. The default is Auto source selection, which instructs the printer to search for the media requested by the application or the printer driver. If the selected tray or cassette empties during a print job, then the printer searches for another source and continues the job.

Some media types, such as transparencies, labels, and envelopes must be supplied from the multipurpose tray. Ensure that the paper is properly loaded by following the instructions outlined in the printer *Operation Guide*.



Source and Media type are separate items in the dialog box, but can be combined using the Combine source and media type lists setting in **Device Settings > Compatibility**. If they are combined, Media type is unavailable on the Basic tab, and media types can be selected in the Source list.

Media type

With this feature, you can select a type of media. If the selected media is found, it is used for the print job. The choices shown may change depending on the selection in Source. The default is Unspecified and if selected, the driver does not switch to another source tray if the selected tray is empty. If you select **Auto media selection**,

the printer searches for another tray or cassette using the same paper size and media type.

When any envelope size is selected as the print size, a message appears, and Envelope is automatically selected as the media type.

You can display the custom media type names from the printer. If any names have been changed at the printer, the new names appear in place of default names. To display the printer names, use the Auto Configure feature in Device Settings.

Some media types, such as transparencies, labels, and envelopes must be supplied from the multipurpose tray. Ensure that the paper is properly loaded by following the instructions outlined in the printer *Operation Guide*.

With this feature, you can print on envelopes by selecting **Envelope** from the Media type list. For some printers, when the job is sent to the printer, a message appears. Follow the printer-specific instructions in the printer *Operation Guide* for printing envelopes. After your job is finished, return the switches to their original position.



Source and Media type are separate items in the dialog box, but can be combined using the Combine source and media type lists setting in **Device Settings > Compatibility**. If they are combined, Media type is unavailable on the Basic tab, and media types can be selected in the Source list.

Destination

With this feature, you can specify which output tray is used for the print job output.

Copies

With this feature, you can specify the number of copies to print. You can print up to 999 copies. For some printers, the maximum is 9999.

Carbon copies

With this feature, you can print additional copies on paper from different trays or cassettes. This is useful for printing copies of documents such as invoices on different colored paper or media type. The maximum number of copies can be printed for each carbon copy.

You can use the Prologue/Epilogue feature in the Advanced tab to add a logo or heading to each carbon copy.

When Carbon copies is selected, Batch copies, Booklet in the Layout tab, and all the features in the Publishing tab are unavailable.

Carbon copies is unavailable when Net Manager is selected in **Device Settings > Administrator > Net Manager**.

Printing carbon copies

- 1 In the Basic tab, select a source and number of copies for the original copy.

- 2 For each carbon copy, load the preferred media types or colored paper into additional paper sources.
- 3 Select the **Carbon copies** check box.
- 4 Click **Settings**.
- 5 In the Carbon Copy Settings dialog box, select the number of copies for each source.
The total number of copies for all sources is displayed under Total.
- 6 Select a **Source**, **Media type**, or both for each carbon copy.
- 7 Click **OK** in all dialog boxes.

Batch copies

With this feature, you can separate the copies of a print job into batches. You can select the number of copies in each batch. You can name each batch printing job and save the settings for later use. This is useful for exporting and importing batch settings.

A cover page can be added to each batch, printed with an optional job name and title. The cover page can be a different size, media type, and orientation from the main document. Size, media type, and source options can be different from those in the Basic tab. When User login or Job accounting is selected in **Device Settings > Administrator**, a cover page cannot be added.

This feature turns on the Collate feature in the Quick Print and Basic tabs. When used with Quick copy, only one batch is saved in the storage device, and batch cover pages are not saved or printed.



To use this feature, a storage device must be installed, and PCL XL or PCL 5c/5e must be selected as the PDL.

When using this feature, Copies and Carbon copies are unavailable.

Batch copies is unavailable when Net Manager is used.

Printing batch copies

- 1 In the Basic tab, select **Batch copies**.
- 2 Click **Settings**.
- 3 In the Batch Copy Settings dialog box, click **New** to add batches to the list.
- 4 Under Copies, enter the number of copies for the selected batch.

- 5 To add a cover page to all batches, select **Print batch cover page**, and then select cover page options:
 - Enter a **Batch job name** if you want a job name printed on the cover page of all batches.
 - For each batch, enter a **Batch cover page title** if you want a title printed on the cover page.
 - Select options for Print size, Source, Media type, and Orientation. Note that a change in one setting may adjust other selections to make them compatible.
- 6 Click **OK** in all dialog boxes.

You can remove a batch by selecting it in the list and clicking **Delete**.

You can import a batch list (.bci) by clicking **Import** and browsing for a valid batch file from your computer or network.

You can save the current batch list (.bci) to your computer or network by clicking **Export**. A saved list can be imported into another printer driver.

Collate

With this feature, you can specify the order in which the pages of a multiple copy job are printed.

Click the **Collate** icons to change between On, Off, On (reverse order), and Off (reverse order). Reverse order options are available only in some printers.

With On selected, the first time the print job is sent to the printer, the data is rendered as page images in the printer memory. The remaining job copies are printed from the stored data. This avoids the extra processing involved in sending every copy from the computer to the printer.

With On selected, the driver prints the complete job set by set (123, 123). With Off selected, it prints each page by set (111, 222). For example, with On selected, three copies of a five-page document outputs as pages one through five in succession, three times.

The printer driver automatically overrides the application's Collate setting and uses the printer driver setting. You can use the application's Collate setting by clearing the Ignore application collation check box in the Compatibility Settings dialog box accessed from Device Settings.

For some printers, if On (reverse order) or Off (reverse order) is selected, the printed pages appear in reverse order. These options are available when Printer default is not selected under Destination in the Basic tab. For some printers with a face-up destination, Off (reverse order) can be disabled in **Device Settings > Compatibility**.

Collate also appears in the Quick Print tab. Changes in Quick Print or Basic tab are reflected in the other tab.

Printing collated documents

- 1 In the Basic tab, set **Collate** to On.
- 2 Type or select the number of complete sets of the print job in the Copies box.
- 3 Click **OK**.

Orientation

With this feature, you can specify the paper orientation of the print job. Click the **Portrait**, **Landscape**, **Rotated portrait**, or **Rotated landscape** icon. If a rotated option is selected, the print job orientation is rotated 180 degrees.

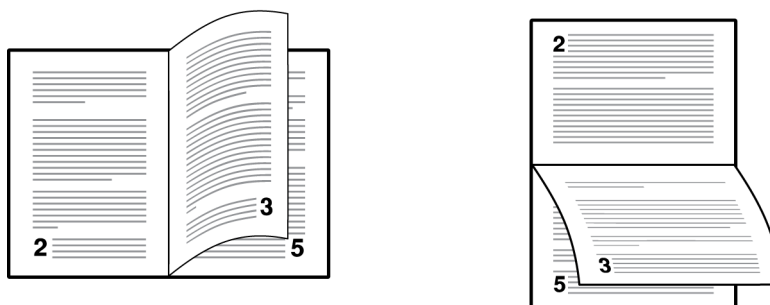
Orientation also appears in the Quick Print tab. Changes in Quick Print or Basic tab are reflected in the other tab.

Duplex

With this feature, you can print on both sides of each page. A duplex unit can turn the paper over to allow printing on the reverse side. To enable duplex printing, select either of the following options:

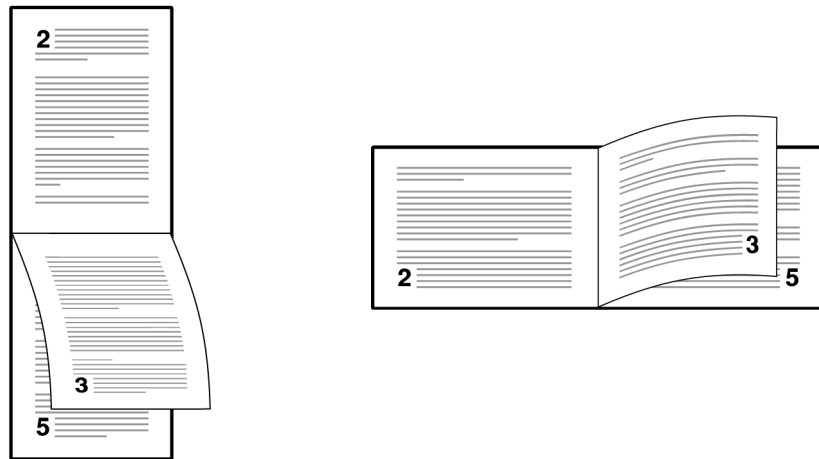
Flip on long edge

Turn the long edge of the page to view the content.



Flip on short edge

Turn the short edge of the page to view the content.



If **Set Duplex as default** is selected in the **Product Library** during installation, then **Flip on long edge** is automatically selected.

When the document contains blank pages and you do not want to include them in the print job, under **Page Description Languages (PDL) > Skip blank pages**, select **On**. To include the blank pages in the print job, select **Off** or **Use layout settings**.

Duplex also appears in the **Quick Print** tab. Changes in **Quick Print** or **Basic** tab are reflected in the other tab.

Duplex should be turned on before using **Lock Settings**. When Duplex is turned off, using **Lock Settings** makes it unavailable to all users.

An administrator can ensure that all jobs are printed on both sides by selecting **Duplex** in **Device Settings > Administrator > Lock Settings**.

Printing in duplex mode

- 1 In the **Basic** tab, click the **Flip on long edge** or **Flip on short edge** icon.
- 2 Click **OK** in all dialog boxes.

EcoPrint

With this feature, you can make images, text, and graphics appear lighter in the print job. EcoPrint does not increase print speed.

EcoPrint also appears in the **Quick Print** tab and in the **Imaging** tab. Changes in **Quick Print**, **Basic**, or **Imaging** tab are reflected in the other tabs.

EcoPrint should be turned on before using **Lock Settings**. When EcoPrint is turned off, using **Lock Settings** makes it unavailable to all users.

An administrator can ensure that all jobs are printed in EcoPrint mode by selecting **EcoPrint** in **Device Settings > Administrator > Lock Settings**.

Selecting EcoPrint

- 1 In the Basic tab, set EcoPrint to On or Off.
With EcoPrint enabled, some printers let you select the amount of toner to save.
- 2 Click **OK**.

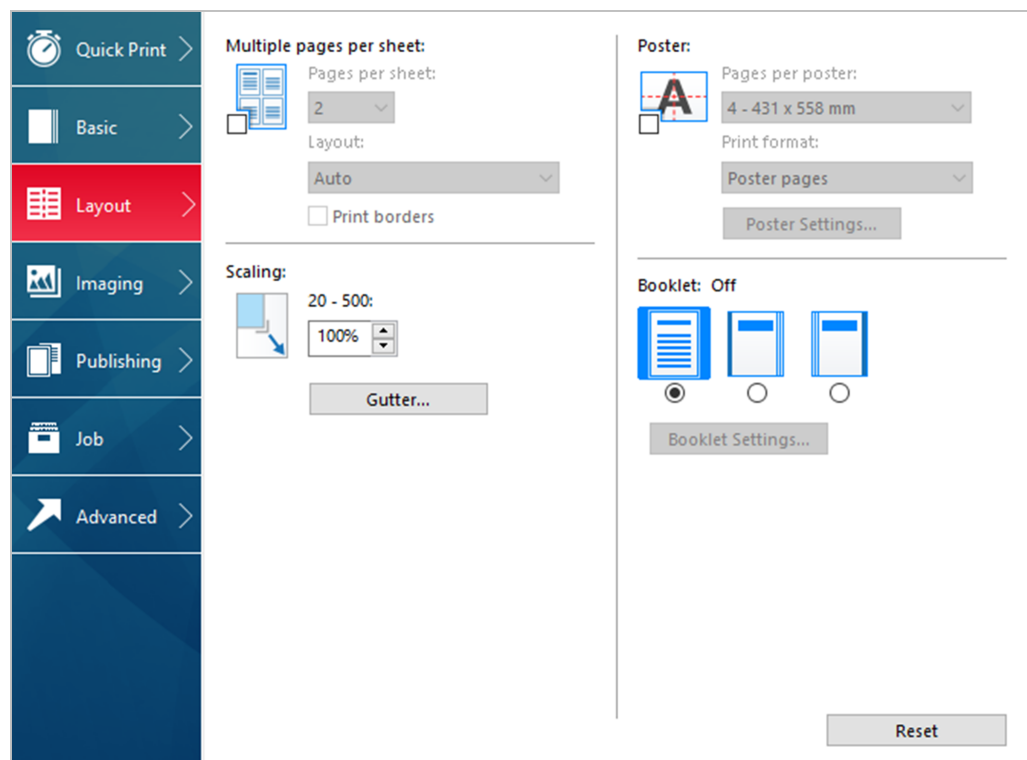
7 Layout

In the Layout tab, you can arrange document data on printed pages without affecting the original document.

To return to the original settings, click **Reset**. The Reset button is available when accessing the printer driver from the application's Print dialog box.



Some features and options may not be applicable to your printer.



Multiple pages per sheet

With this feature, you can print several pages on a single sheet of paper for the purpose of reviewing the document and conserving paper. The size and readability of the multiple pages decrease as the number of pages per sheet is increased. You can set the arrangement of the pages as well as print borders around each of the pages in the Layout tab.

This feature also appears as Pages per sheet in the Quick Print tab, where you can select 2 pages per sheet, 4 pages per sheet, and Off.

If Multiple pages per sheet is selected, Scaling and Poster are unavailable.

When the document contains blank pages and you do not want to include them in the print job, under **Page Description Languages (PDL) > Skip blank pages**, select **On**. To include the blank pages in the print job, select **Off** or **Use layout settings**.

Multiple Pages per Sheet should be turned on before using Lock Settings. When Multiple Pages per Sheet is turned off, using Lock Settings makes it unavailable to all users.

An administrator can ensure that all jobs are printed with multiple pages on a sheet by selecting **Multiple pages per sheet** in **Device Settings > Administrator > Lock Settings**.

Printing multiple pages per sheet

- 1 In the Layout tab, click the **Multiple pages per sheet** icon.
- 2 In the Pages per sheet list, select the number of pages to print on each sheet of paper.
- 3 In the Layout list, select the direction the pages should flow.
- 4 If you want to print a border around each page, select **Print borders**.
- 5 Click **OK** in all dialog boxes.

Scaling

With this feature, you can increase or decrease text and graphics on a page.

You can also select a gutter setting that enlarges the margins to accommodate manual stapling or manual hole punch.

If other Layout tab options are selected, Scaling is unavailable.

Setting scaling on the page

- 1 In the Layout tab, type or select a scaling percentage from 20 to 500.
- 2 Click **OK** in all dialog boxes.

Gutter

With this feature, you can increase the margins around your text and graphics on the left side and at the top of the printed sheet. Gutter is often used for binding, hole punch, or stapling to make a print job easier to read. This creates a larger margin space by shifting the printable area to the right, or down, as much as one inch (25.4 mm).

Gutter width displays the unit of measurement in inches or millimeters. You can change the unit setting in the User Settings dialog box by accessing **Device Settings**

> **User.** In a client/server environment, the unit setting is unavailable to the client computer.



Gutter is available in Layout tab when PDL is set to PDF.

Creating a gutter

- 1 In the Layout tab, click **Gutter**.
- 2 Under Gutter width, type or select a value between 0.20 to 1.00 inch (5.0 to 25.4 mm).

Short edge (top)

This selection modifies the outside margin on the top edge of the page.

Long edge (left)

This selection modifies the outside margin on the left side of the page.



Availability of Gutter settings varies depending on Orientation and Duplex settings in the Basic tab.

- 3 If the content extends too close to the edge of the page, select **Reduce image to fit**. The content appears slightly reduced and away from the edge of the page.
If the content does not extend beyond the page when the gutter increases, clear **Reduce image to fit**.
- 4 Click **OK** in all dialog boxes.

Poster

With this feature, you can create a document size that is larger than the paper your printer can support. You can print up to 25 times larger than the original document. Segments of the poster document are printed on several sheets of paper and with the assistance of poster settings, you can reassemble the sheets easily to create a poster.

If Poster is selected, other Layout tab options are unavailable.

Pages per poster

You can select the poster size in relation to the original document size. Each option shows the number of sheets to be printed and the maximum poster size.

Pages per poster displays the unit of measurement in inches or millimeters. You can change the unit setting in the User Settings dialog box by accessing **Device Settings** > **User**. In a client/server environment, the unit setting is unavailable to the client computer.

Print format

You can print a proof sheet, along with the poster, to guide you in assembling the printed poster sheets.

Poster pages

This selection prints all of the sheets to be assembled as a poster.

Proof sheet

This selection prints all the poster pages on one sheet with markings that display the sheet assembly.

Poster pages and proof sheet

This selection prints all poster sheets and a one-page proof sheet.

Poster settings

You can select options, in any combination to make it easier to create a poster. These options print visual cues on the poster sheets that provide help in cropping and assembling the pages.

Overlap edges

This selection duplicates the edges of document data on adjoining sheets. Poster appearance is improved when the edges overlap slightly. Select the check box, then type or select a value between 0.00 and 1.20 inches (0.0 and 30.4 mm). This option reduces the final poster size slightly.

Print crop marks

This selection prints a border at the edges of each poster sheet. You can crop each sheet on the border before assembling the sheets. This option ensures that data on adjoining sheets matches precisely.

Print assembly marks

This selection prints numbers at the edges of each sheet, matching numbers on adjoining sheets. Assemble each sheet edge to the same numbered edge on another sheet.



[Print assembly marks is not available when GDI compatible mode is selected in the Page Description Languages \(PDL\) dialog box.](#)

Printing a poster

- 1** In the Layout tab, click the **Poster** icon.
- 2** In Pages per poster, select the poster size. Each option describes the number of sheets it takes to represent one finished poster page.
- 3** In Print format, select one of the options for a finished print format.
- 4** Click **Poster Settings** to select options in any combination. These options ensure a precise assembly of the pages to create the poster.

- 5 Click **OK** in all dialog boxes.

Booklet

With this feature, you can print a two-page layout on both sides of each sheet of paper. For some printers, you can fold and bind the booklet in the center. Folded booklets are half the size of the selected paper.

Additional booklet options are available in the Booklet Settings dialog box.

Layout

You can select from the following booklet layout settings:

Create from driver settings

Uses the driver settings for page sequence and pages per sheet. Select this option when the booklet layout is not created in the application.

Create from application settings

Uses the application settings for page sequence and pages per sheet. Select this option when the application creates the booklet layout.

Staple and fold settings

For some printers, when a folding unit is installed, you can select from the following settings. Otherwise, None is automatically selected.

None

Prints the booklet without stapling and folding.

Staple and fold

Prints, staples, and folds the booklet.

Fold only

Prints and folds the booklet without stapling.

When selecting the stapling or folding option, make sure to select the number of sheets in the booklet.

Auto

Divides document sheets equally into one or more booklets depending on the Staple and fold settings selections. For printers that do not support a folding unit, you can print all document pages into a single booklet.

Number selected

Prints document pages into separate booklets, up to the selected number of sheets for each booklet. The final booklet may contain fewer sheets.

When Booklet is selected, other Layout tab options are unavailable.

A different paper source can be selected for the booklet cover. To include a cover on the booklet, select the **Publishing** tab, then select **Cover mode**.

When the document contains blank pages and you do not want to include them in the print job, under **Page Description Languages (PDL) > Skip blank pages**, select **On** or **Use layout settings**.

Printing a booklet

- 1 In the Layout tab, click the icon for one of the two binding options:

Left edge binding

This selection prints text that reads from left to right.

Right edge binding

This selection prints text that reads from right to left.

- 2 To select additional booklet options, click **Booklet Settings**.
- 3 Click **OK** in all dialog boxes.

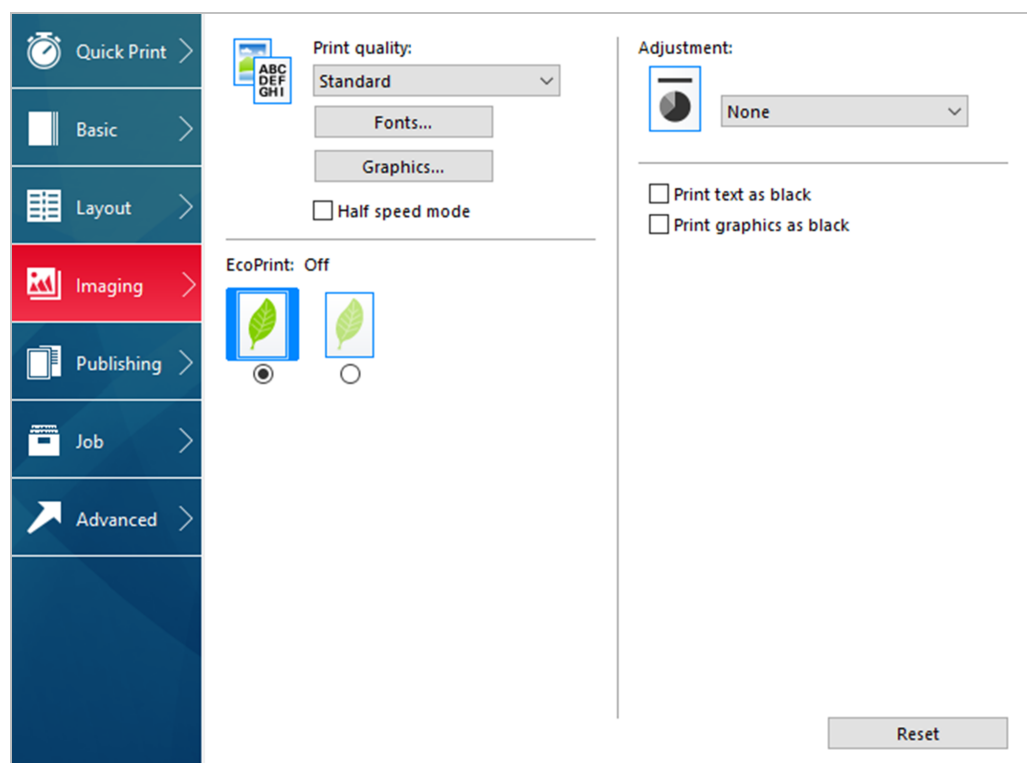
8 Imaging

In the Imaging tab, you can manage print quality and grayscale settings.

To return to the original settings, click **Reset**. The Reset button is available when accessing the printer driver from the application's Print dialog box.



Some features and options may not be applicable to your printer.



Print quality and Custom quality

With these features, you can set the resolution for the print job. Resolution is a measurement, in dots per linear inch (dpi), that describes the sharpness and clarity of printed text and images. Custom Quality Settings lets you set a more refined resolution for the print job.

Print quality selection

In the Imaging tab, select a Print quality setting from the list.



Some options may not be applicable to your printer.

High quality, Standard, Draft

Select one of these settings to print from a high or low print resolution. Standard is unavailable when PCL 5c/5e is selected in the Page Description Languages (PDL) dialog box.

Custom

Click Custom to open a Custom Quality Settings dialog box. Depending on your printer, resolution can be set to Fine 1200 dpi, Fast 1200 dpi, 600 dpi, or 300 dpi. Kyocera Image Refinement refines the edges of text and vector graphics, and can be set to On or Off.

Font Settings

A computer font is a data file containing a set of glyphs (visual representations of textual elements), characters, or symbols. Common terms for fonts are:

Outline fonts

In contrast to bitmap fonts, these are defined as a set of mathematical lines and curves. An outline font is more easily scalable (designed to display and print clearly at any point size) than a bitmap font.

Bitmap fonts

These fonts define each character as a pattern of pixels (the smallest resolvable rectangular areas of an image). Such fonts are not easily scalable and distort when reduced or enlarged.

Native fonts

These are the basic or original fonts installed with the computer operating system. TrueType fonts are the native fonts used by Microsoft Windows.

TrueType fonts

These are a type of scalable outline fonts. TrueType has long been the most common format for fonts on Microsoft Windows.

System fonts

These are the primary fonts used by the operating system. They are typically accessed through an application interface or through a common font dialog box.

Device fonts

These fonts are stored either permanently or temporarily in the printer memory.

Font Settings options

In the Font Settings dialog box, you can specify how TrueType fonts are sent to the printer. The chosen method affects the speed and quality of the print job.

Download as outlines

This method is best suited for large documents or print jobs using multiple fonts and font sizes. Print speeds are faster because of the optimization features in this setting. The repetition of similar font data sent to the printer is reduced, thereby increasing the print speed. Print speed is not increased when using Asian fonts such as Japanese, Chinese, and Korean, because of the large amount of font information used for these particular fonts.

Allow native download

This method improves text quality and increases print speed by converting TrueType fonts to Adobe Type 42 font format. This feature is available when KPDLM is selected as the PDL.

Download as bitmaps

Downloading fonts as bitmaps provides more detail, however it creates large file sizes. This is best suited for print jobs with custom fonts, very small fonts (point size 1-4), or Asian fonts.

Substitute with device fonts

Font substitution is the process of using one font in place of another when the intended font is unavailable to a printer. Font substitution may be critical for output of documents to printer that are not well supported by a large font inventory. Standard PostScript fonts are available for substitution.



GDI compatible mode does not support this method.

Disable device fonts

In some cases, the printer substitutes fonts even if you send the TrueType fonts as outline fonts or bitmap images. Select **Disable device fonts** to prevent substitution of device fonts for TrueType fonts.

This option also improves portability of printable data. If cleared, device fonts may not match when sent to a different printer.

Some Adobe applications have device font limitations. To overcome these limitations, select **Disable device fonts**. Device fonts are normally visible in the application font lists as printer icons next to the font name, unless there are equivalent system fonts, in which case the "TT" TrueType icon remains.

Selecting Font Settings

- 1 In **Imaging > Fonts**, select one of the methods for sending TrueType fonts.
- 2 Click **OK** in all dialog boxes.

Setting Font Substitution

To set font substitution, you must open Printing Preferences outside of a printing application by the following procedure.

- 1 In Control Panel, select **Devices and Printers**.
- 2 Right-click your printer, and then select **Printing preferences**.
- 3 In the Imaging tab, navigate to:
Fonts > Substitute with device fonts > Fonts
In the Fonts Substitution dialog box, the System fonts list shows the fonts installed on your computer. The Available device fonts list shows the printer fonts.
- 4 Select the system font, and then the available device font to be substituted.
- 5 To restore the default values, click **Reset**.
- 6 Click **OK**.
If the device font does not have similar font characteristics to the system font, character spacing in the document may appear incorrect.

Disabling device fonts

- 1 In **Imaging > Fonts**, select the **Disable device fonts** check box.
- 2 Click **OK** to save your settings.

Graphics Settings

Graphics are pictorial representations of information. Graphics can be functional (charts, diagrams) or artistic (drawings, photographs). With Graphics Settings, you can control the visual results of your printed graphics with options that can be set by the selected Page Description Language (PDL).

Pattern scaling

With this feature, you can help improve visual compatibility between screen and print output. Graphics objects, such as a shape or a path, often include patterns and fills that are composed of collections of printed dots.

- A pattern is a planned or random repetition of colors, shapes, lines, values, and textures to create a visual arrangement.
- A fill is the application of a color or grayscale to a graphics object.

If printed patterns and fills do not match the appearance of that on the screen, use **Pattern scaling** to select a different density of printed dots. In **Imaging > Graphics**, select a Pattern scaling setting:

Auto

This setting prints patterns and fills to match the on-screen appearance.

Coarse

This setting prints patterns and fills with the fewest number of lines, patterns, or dots. Coarse is the same as Auto when PCL XL or PCL 5c/5e is selected as the PDL.

Medium

This setting prints patterns and fills with a greater number of lines, patterns or dots than the Coarse setting. Medium is the same as Auto if KPDL is selected as the PDL.

Fine

This setting prints patterns and fills with the greatest number of lines, patterns, or dots. Printed patterns and fills may appear more dense than the on-screen appearance.

Line thinning

With this feature, you can reduce the pen width of lines used for barcodes and line drawings. Drawing values controlled by an application are not changed.



Line thinning is available only when PCL XL is selected as the PDL. When GDI compatible mode is selected in the page description languages (PDL) dialog box, Line thinning is not available.

In **Imaging > Graphics**, select a Line thinning setting:

Off

Line thinning is not applied.

Barcodes

This setting reduces the pen width value for vertical and horizontal lines. It improves the readability of barcodes.

Fine lines

This setting reduces the pen width value for vertical, horizontal, and diagonal lines.

All

This setting reduces the pen width by a value of 1 for vertical, horizontal, and diagonal line used in barcodes or line drawings.

For some printers, you can select **Correct fine line by device** to improve the quality of barcode printing. This feature enables correction of pen width by the printer rather than by the driver.

Inversion options



This is available only when PDL is set to KPDL.

Inversion is the opposite of the normal order, arrangement, or position of an image or printed content.

In **Imaging > Graphics**, select an inversion option:

Reverse image

This setting prints images like a photo negative, reversing black and white areas of the image.

Mirror print

This setting prints the page content reversed, as it would appear in a mirror image.

Optimization



This is available only when PDL is set to KPD.

Optimization is a process or methodology of improving a printer function or effectiveness.

In **Imaging > Graphics**, select an optimization option.

Fast printing

This setting increases print speed and decreases spool size. It delivers images in binary format. It can be used for most everyday printing needs.

Document portability

This setting creates a PostScript file in ASCII text encoding. Unlike the binary format created in Fast printing, the ASCII text created with this selection can be edited.

CIE option



This is available only when PDL is set to KPD.

With this feature, you can bypass the normal procedure of processing every aspect of the CIE color space used in applications such as Adobe Acrobat and Photoshop. This feature increases print speed for documents printed from these applications by optimizing CIE data. It has no effect on print jobs that do not use CIE data. CIE optimization should be selected for speed, not accuracy, so printed output may be different from appearance on the screen.

In **Imaging > Graphics**, select the **CIE optimization** check box.

Half Speed Mode

With this feature, you can reduce the print speed to half the rated speed. When selected, the toner adheres better when printing on small size, thick, or textured paper. This mode may result in quieter printing.

To enable this feature, in the Imaging tab, select the **Half speed mode** check box.



Half speed mode applies to all media types except Transparency and Vellum.

EcoPrint

With this feature, you can change toner saturation in the print job, making the entire print image, including text and graphics, appear lighter. EcoPrint does not increase print speed. The amount of toner varies based on your printer and the type of data printed (text, graphics, or both).

EcoPrint is also available in the Quick Print and Basic tabs. Changes in Quick Print, Basic, or Imaging tab are reflected in the other tabs.

EcoPrint should be turned on before using Lock Settings. When EcoPrint is turned off, using Lock Settings makes it unavailable to all users.

An administrator can ensure that all jobs are printed in EcoPrint mode by selecting **EcoPrint** in **Device Settings > Administrator > Lock Settings**.

Selecting EcoPrint

- 1 In the Imaging tab, set **EcoPrint** to On or Off.
With EcoPrint enabled, some printers let you select the amount of toner to save.
- 2 Click **OK**.

Black and white adjustment

With this feature, you can change the brightness and contrast of graphics. These settings are useful if graphic images are printing too light, too gray, or too dark. Text remains unaffected.

Adjusting black and white settings

- 1 In the Imaging tab, under the Adjustment list, select **Custom**.
A preview image in the Adjustment Settings dialog box illustrates any brightness and contrast changes.
- 2 Type or select the Brightness value to lighten or darken the graphic images of the print job.

The brightest setting is +100; the darkest is -100. Zero is the default mid-level setting. Adjusting brightness allows for the customization of graphic images if images are printing too light or too dark.

- 3 Type or select the Contrast value to increase or decrease the proportion of light to dark in the graphic images of the print job.

A high contrast setting decreases the grayscale spectrum, making light grays lighter and dark grays darker. A low contrast setting increases the grayscale spectrum, making light grays darker and dark grays lighter.

The highest contrast setting is +100; the lowest is -100. Zero is the default mid-level setting. Adjusting contrast is useful if graphic images are printing too gray, or too black and white. Text remains unaffected.

- 4 To restore the default values, click **Reset**.
- 5 Click **OK** to save the new black and white settings.

Text and graphics effects

Special settings are available for printing.

Print text as black

This option prints all color text as black. It produces faster printing of color text by reducing the amount of data sent to the printer. In black and white printing, it increases the detail for light-colored text printed.

Print graphics as black

This option prints all color graphics with black, rather than grayscale. This feature is intended for CAD applications.

9 Publishing

In the Publishing tab, you can create covers and inserts for a print job, insert sheets between transparencies, and set the first page of every chapter to print on the front side of the paper. The features on this tab are unavailable when PDF is selected as the PDL.

To return to the original settings, click **Reset**. The Reset button is available when accessing the printer driver from the application's Print dialog box.



Some features and options may not be applicable to your printer.

Cover mode:

Front
 Front and back

Print onto:

Front
 Outside
 Inside

Back
 Inside
 Outside

Media for cover:
Auto (Unspecified)

Transparency interleaving:

Print onto backing

Media for backing:
Auto (Unspecified)

Page insert:

Print onto:
 Front
 Back

Insert before pages:

Media for page:
Auto (Unspecified)

Chapter page insert:

Beginning pages for chapters:

Reset

Cover mode

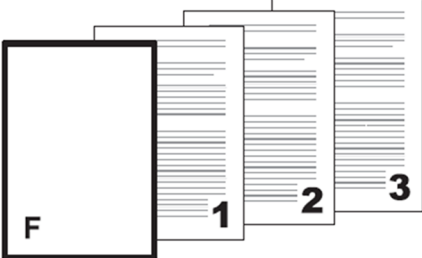
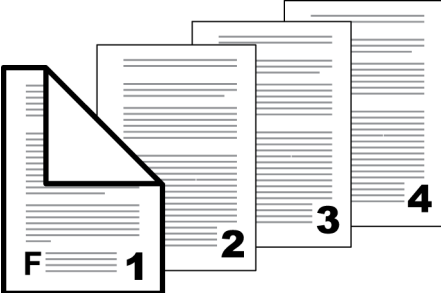
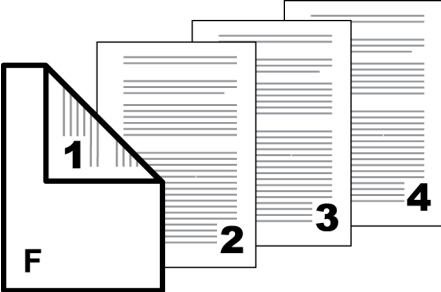
With this feature, you can add cover pages to the front and back of your document. You can print on cover pages of a different weight or color than the main document. The source of the cover paper is specified by adjusting the Media for cover settings in the Publishing tab.

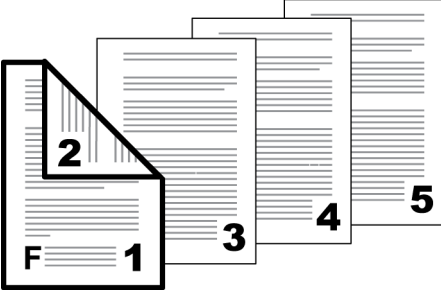
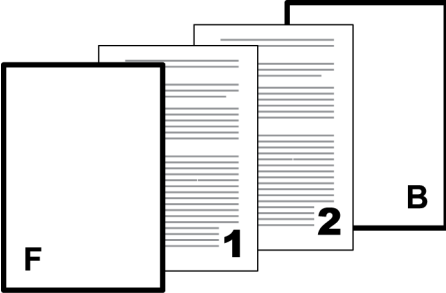
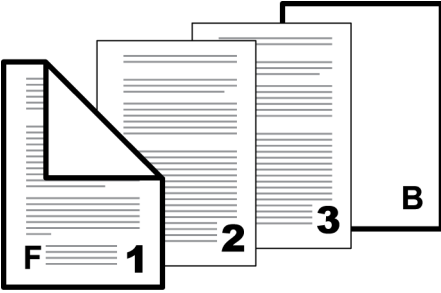
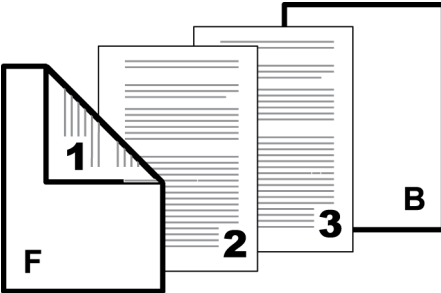
For some printers, duplex printing must be selected in the Basic or Quick Print tab in order to print using the Front / Inside and Back / Outside options.

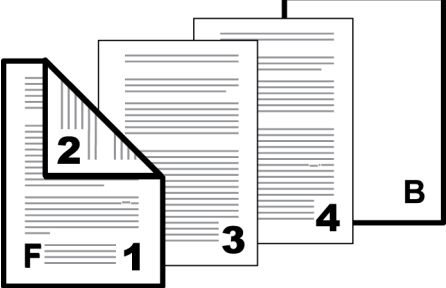
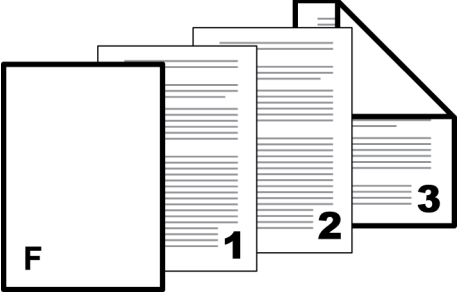
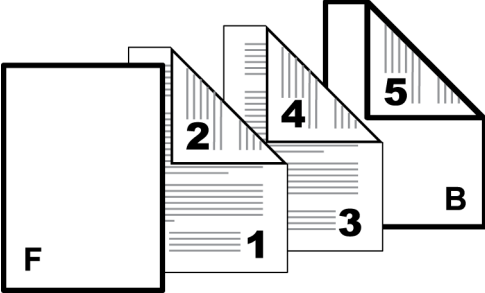


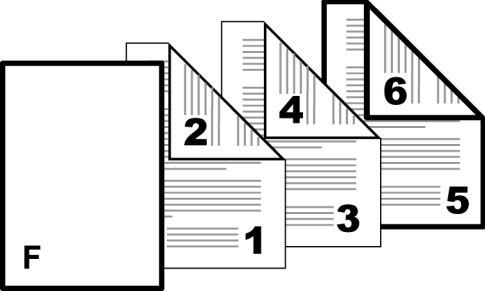
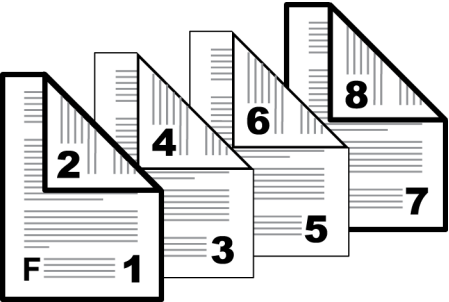
Cover mode cannot be used with Transparency interleaving.

Cover mode options

Check Box Selection	Cover Insertion Type
Front	<p>Inserts a blank front cover.</p> 
Front Front Outside	<p>Prints on the outside surface of the front cover.</p> 
Front Front Inside	<p>Prints on the inside surface of the front cover.</p> 

Check Box Selection	Cover Insertion Type
Front Front Outside Front Inside	Prints on the outside and inside surfaces of the front cover. 
Front and back	Inserts blank front and back covers. 
Front and back Front Outside	Prints on the outside surface of the front cover and inserts a blank back cover. 
Front and back Front Inside	Prints on the inside surface of the front cover and inserts a blank back cover. 

Check Box Selection	Cover Insertion Type
Front and back Front Outside Front Inside	Prints on both sides of the front cover and inserts a blank back cover. 
Front and back Back Inside	Prints on the inside surface of the back cover and inserts a blank front cover. 
Front and back Back Outside	Prints on the outside surface of the back cover and inserts a blank front cover. 

Check Box Selection	Cover Insertion Type
Front and back Back Inside Back Outside	Prints on both sides of the back cover and inserts a blank front cover. 
Front and back Front Outside Front Inside Back Inside Back Outside	Prints on both sides of the front and back covers. 

Printing covers

- 1 In the Publishing tab, click the **Cover mode** icon.
- 2 Select **Front** or **Front and back** to specify the type of covers.
- 3 Select from Print onto options if you want to print on the covers.
- 4 In the Media for cover list, select the media type or source cassette for the front and back covers. When you choose the media type, a source cassette matching that media type is automatically selected.
- 5 Click **OK** in all dialog boxes.

Transparency interleaving

With this feature, you can insert a backing sheet between printed transparencies. The backing sheet, also known as an interleaf, helps keep transparencies clean and prevents them from clinging together. This feature is available only when printing on transparencies supplied from the multipurpose tray. You can print the same content on the backing pages as on the transparencies.



Transparency interleaving cannot be used together with Cover mode, Page insert, and Chapter page insert.

Inserting backing sheets between transparencies

- 1 In **Basic > Media type**, select **Transparency**.



If **Media type** does not appear, then select **Auto (Transparency)** in the **Source** list. The media type and source lists have been combined in **Device Settings > Compatibility**.

- 2 In the Publishing tab, click the **Transparency interleaving** icon.
- 3 To print the transparency content on the inserted pages, select the **Print onto backing** check box.
- 4 In the Media for backing list, select the media type or source cassette. When you choose the media type, a source cassette matching that media type is automatically selected.
- 5 Click **OK**.

The printer operation panel prompts you to load transparencies into the multipurpose tray, and if necessary, load backing paper into the selected cassette.

Page insert

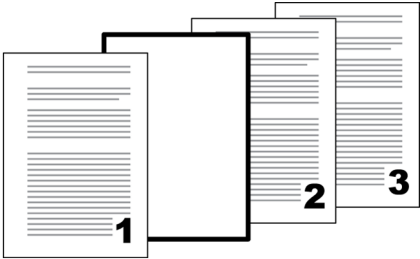
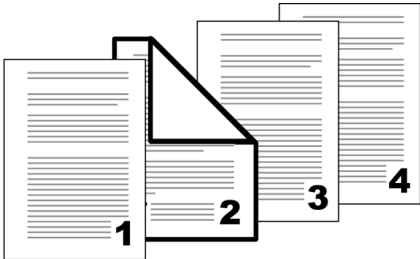
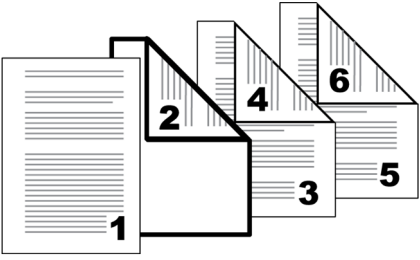
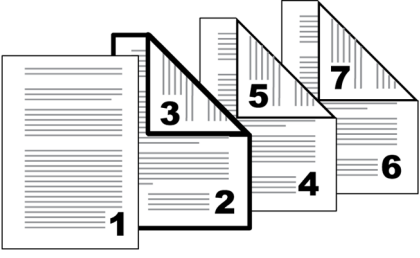
With this feature, you can insert a preprinted page or a page of a different paper type at specific points in a print job. The inserted page can also be printed on during the print job. Both sides of the page insert can be printed on by using the duplex unit.

Duplex printing must be selected in the Basic tab or Quick Print tab in order to print using the Back option.



Page insert cannot be used with Transparency interleaving.

Page insertion options

Check Box Selection	Page Insertion Type
<p>Page insert</p>	<p>Inserts a blank page.</p> 
<p>Page insert Front</p>	<p>Prints on the front side of the inserted page.</p> 
<p>Page insert Back</p>	<p>Prints on the back side of the inserted page.</p> 
<p>Page insert Front Back</p>	<p>Prints on both sides of the inserted page.</p> 

Printing page inserts

- 1 In the Publishing tab, click the **Page insert** icon.
- 2 Select from available Print onto options:
 - Front**
Prints on the front of the insert.
 - Back**
Prints on the back of the insert.
- 3 In Insert before pages, type the page number to insert. A page is inserted between the page number you typed and the page before it.
- 4 From the Media for page list, select the media type or source cassette. When you choose the media type, a source cassette matching that media type is automatically selected.
- 5 Click **OK** in all dialog boxes.

Chapter page insert

With this feature, you can force the initial page of each chapter in a document to print on the front side of the paper. You identify the first page of each chapter, up to 100 chapters. This feature is applicable for duplex printing and for printing multiple pages on a sheet.

Collate is enabled automatically in the Quick Print and Basic tabs.



Chapter page insert cannot be used with Poster and Booklet in the Layout tab, or Transparency interleaving in the Publishing tab.

This feature is unavailable when PCL 5c/5e or PDF is selected as the PDL.

Printing with Chapter page insert

- 1 In the Quick Print or Basic tab, select **Duplex**.
- 2 In the Publishing tab, click the **Chapter page insert** icon.
- 3 In Beginning pages for chapters, enter page numbers from 2 to 999, where each number is the first page of a chapter. You can type individual page numbers separated by commas.



If Outside and Inside are selected in Cover Mode > Print onto > Front, then enter page numbers from 3 to 999.

- 4 Click **OK** in all dialog boxes.

10 Job

In the Job tab, you can store print jobs in the memory installed in the printer. You can also select a job name to use with Job storage features. You can use this tab to set or change the default settings that apply when you print a document from an application.

To return to the original settings, click **Reset**. The Reset button is available when accessing the printer driver from the application's Print dialog box.

An administrator can ensure that all jobs are stored or printed with the selected Job tab settings by navigating to **Device Settings > Administrator > Lock Settings > Job tab**.



Some features and options may not be applicable to your printer.

The screenshot shows the 'Job' tab selected in a printer driver interface. On the left is a vertical navigation menu with options: Quick Print, Basic, Layout, Imaging, Publishing, Job (highlighted in red), and Advanced. The main area is titled 'Job storage (e-MPS):' and contains a 'Type:' dropdown menu set to 'Proof and hold'. To the right, under 'Job name:', there are three radio button options: 'Application defined' (selected), 'Don't use application name' (checked), and 'Custom:' (with an empty text input field below it). Below these is an 'Overwrite job name:' dropdown menu set to 'Use job name + date and t'. A 'Reset' button is located at the bottom right of the settings area.

Job storage (e-MPS)

Job storage (e-MPS) offers a set of options for saving print jobs in printer memory, so that you can print or reprint them later. Print jobs can easily be reprinted later using the printer operation panel, and printing of sensitive documents can be restricted to approved users.

This feature is a multi-tier solution that provides advanced print management, directly from the desktop. By storing a job in the printer, you can print it from the operation panel without sending it again from the computer.

To use the Job storage (e-MPS) features, you can set a user name in the User Settings dialog box, available in Device Settings. If you do not set a user name, the Windows login user name is the default.

Job storage (e-MPS) is unavailable when Net Manager is selected in **Device Settings > Administrator > Net Manager**.

Job storage (e-MPS) options



Some options may not be applicable to your printer.

Options	Access code or password required	When job is printed	When job is deleted from memory
Custom box	Optional	When printed from operation panel	When manually deleted or up to 31 days
Quick copy	No	When sent from the computer	When printer is turned off, or storage device is full, or job retention date has passed
Proof and hold	No	One print when job is sent; remaining prints later	When printer is turned off, or job retention date has passed
Private print	Yes	When access code or password is entered at operation panel	When printer is turned off, or after printing, or job retention date has passed
Job storage	Optional	When printed from operation panel	When manually deleted

Custom box

With this feature, you can store print jobs until they are printed from the printer operation panel. You can print one or more jobs from the storage device.

Print jobs can be deleted after printing or saved on the storage device for 1-31 days.

Custom boxes must be set up for each user at the printer home page and in the Hard Disk or SSD Settings dialog box, accessed from Device Settings. The maximum number of custom boxes is 1000.

Storing a job in a Custom box

- 1 In the Job tab, click **Job storage (e-MPS)**.
- 2 In the Type list, select **Custom box**.
- 3 Click **Settings**.
- 4 Select a Custom Box Settings option:

Use specific box number

Type the box number and password.

Prompt for box number

When starting to print, the Custom Box dialog box appears. Type a box number from the Defined custom boxes list. If a password was set, type the password.

Display box number list

When starting to print, the Custom Box dialog box appears. Select a box number from the list. If a password was set, type the password.

Verify box number for each login user

When starting to print, the Custom Box dialog box appears. Type a box number. To include a password, select Require password and type the password.



You can only select **Display box number list** and **Verify box number for each login user** if you select **Shared box** in the **Hard Disk or SSD Settings** dialog box.

- 5 Click **OK** in all dialog boxes, and then send the print job.

If you select **Verify box number for each login user**, the driver searches for a login user name from the custom box list to serve as the custom box name:

- If a match is found, the custom box is used for the print job.
- If a match is not found, the driver checks for administrator or user permissions. With administrator permissions, you are prompted to type a box number and optional password for the print job. The driver searches for a Windows login user name and adds this name with the box number and password to the custom box list in the driver. With user permissions, the print job is canceled. You are then prompted to contact an administrator to establish printing permissions.

Quick copy

Quick copy is a Job storage (e-MPS) option that prints all copies of a print job and stores the job temporarily on the storage device for reprinting later. This feature is available when a storage device is installed and selected in Device Settings.

Quick copy is useful for printing the job again later in the day when you need additional copies at short notice. You can set the number of additional copies and print the job from the printer operation panel without sending the job again from the computer.

The number of Quick copy jobs that can be stored is set at the printer operation panel. When the designated number of jobs is reached, older jobs are replaced by new jobs. All Quick copy jobs are stored on the storage device after printing. Jobs are deleted when the printer is turned off or the job retention date has passed. You can manually delete a job at the operation panel.



A print job replaces a job on the storage device having the same user name and job name. To prevent this, select **Use job name + date and time** under Overwrite job name.



If you are using this feature with an SD card, clear the **RAM disk** check box in Device Settings. The RAM disk settings in the device must also be turned off.

Printing a Quick copy job

- 1 In the Job tab, click the **Job storage (e-MPS)** icon.
- 2 In the Type list, select **Quick copy**.
- 3 Click **OK**, and then send the print job.

Proof and hold

Proof and hold is a Job storage (e-MPS) option that prints one copy of a print job so that you can proof it before printing the remaining copies. This feature is available when a storage device is installed or a RAM disk is set up in the printer and selected in Device Settings.

After the proof copy is printed and checked, remaining copies can be printed from the printer operation panel without sending the job again from the computer. If preferred, you can change the number of copies printed.

The number of Proof and hold jobs that can be stored is set at the printer operation panel. When the designated number of jobs is reached, older jobs are replaced by new jobs. All Proof and hold jobs are stored on the storage device after printing. Jobs are deleted when the printer is turned off or the job retention date has passed. You can manually delete a job at the operation panel.



A print job can replace a job on the storage device having the same user name and job name. To prevent this, select **Use job name + date and time** under Overwrite job name.

Printing a Proof and hold job

- 1 In the Basic tab, select the number of copies to be printed.
- 2 In the Job tab, click the **Job storage (e-MPS)** icon.
- 3 In the Type list, select **Proof and hold**.
- 4 Click **OK**, and then send the print job.

Private print

Private print is a Job storage (e-MPS) option that saves jobs on the storage device or RAM disk for printing until an access code or password is entered. When the storage device or RAM disk reaches maximum capacity and a new job is sent to be stored, the oldest stored job is replaced by the new job. Private print jobs are deleted when the printer is reset or turned off, or when the job retention date has passed. If you do not want the job deleted, select the Job storage feature.

When sending a sensitive document to the printer, a user must type an access code or password, which is attached to the print job along with the Job name and User name. You can also select a prompt option for typing the access code or password. The job is not printed until a user enters the access code or password at the printer operation panel. After the job is printed, it is removed from printer memory.

The number of Private print jobs that can be stored is limited only by the storage capacity of the storage device or RAM disk. You can manually delete a job at the operation panel.



A print job can replace a job on the storage device having the same user name and job name. To prevent this, select **Use job name + date and time** under Overwrite job name.

Storing a Private print job

- 1 In the Job tab, click the **Job storage (e-MPS)** icon.
- 2 In the Type list, select **Private print**.
- 3 Select a method for choosing an access code or password:
 - Clear **Prompt for access code** or **Prompt for password**, and then specify the common access code or password for all print jobs.
 - Select **Prompt for access code** or **Prompt for password** to use different access codes or passwords for each print job.



After sending the print job, enter the access code or password in the prompt that appears.

- 4 Click **OK**, and then send the print job.

Job storage

Job storage is a Job storage (e-MPS) option that stores a print job permanently on the storage device for printing later. You also have the option of protecting the print job from unauthorized printing by using an access code or password. This feature is available when a storage device is installed and selected in Device Settings.

Job storage is useful for jobs that need to be available for printing at any time, even if the printer has been turned off and turned on again. Job storage jobs can only be removed manually from printer memory.

You can also attach an access code or password to a Job storage job, so that you can print a job without anyone else seeing it, or restrict printing to approved users. When the access code or password is used, the job is not printed until a user prints it at the printer operation panel. After the job is printed, it remains in printer memory.

The number of Job storage jobs that can be stored is limited only by the capacity of the storage device. You can manually delete a job at the operation panel.



A print job can replace a job on the storage device having the same user name and job name. To prevent this, select **Use job name + date and time** under Overwrite job name.



If you are using this feature with an SD card, clear the RAM disk check box in Device Settings. The RAM disk settings in the device must also be turned off.

Storing a Job storage job

- 1 In the Job tab, select the **Job storage (e-MPS)** icon.
- 2 In the Type list, select **Job storage**.
- 3 Select a method for choosing an access code or password:
 - Clear **Prompt for access code** or **Prompt for password**, and then specify the common access code or password for all print jobs.
 - Select **Prompt for access code** or **Prompt for password** to use different access codes or passwords for each print job.



After sending the print job, enter the access code or password in the prompt that appears.

- 4 Click **OK**, and then send the print job.

User Login

User Login provides job restriction by user, in contrast to the Job accounting feature, which assigns privileges by division or department. This feature appears in the Job tab when Use specific name is selected in **Device Settings > Administrator > User Login**.

In the Job tab, you can change the name and password temporarily for your print job. This does not change the default name and password that were set in Device Settings.

Printing with User Login

- 1 In the Job tab, under User Login, click **Settings**.
- 2 In the Identity Settings dialog box, type a name and password.
- 3 To restore the default values, click **Reset**.
- 4 Click **OK** in all dialog boxes.

Job Accounting

With Job accounting, account IDs (identification numbers) can be assigned to users or departments. This feature appears in the Job tab when Use specific account ID is selected in **Device Settings > Administrator > Job Accounting**.

In the Job tab, you can change the account ID temporarily for your print job. This does not change the default account ID that was set in Device Settings.

Printing with Job Accounting

- 1 In the Job tab, under Job accounting, click **Settings**.
- 2 In the Identity Settings dialog box, type an account ID.
- 3 To restore the default value, click **Reset**.
- 4 Click **OK** in all dialog boxes.

Job name

A Job name is a unique identifier for each print job. It helps you find and print your job from the printer operation panel. When you send a print job using one of the Job storage (e-MPS) options, you can assign a custom name to the job or use the name of the application file.

You can choose to include or omit the application name from the application defined Job name. You can also ensure that jobs in printer memory are not replaced by new jobs having the same Job name.

Don't use application name

With this feature, you can remove the application name from the job name in job storage features. By selecting **Don't use application name**, the file name you choose appears clearly in the job list.

Overwrite job name

With this feature, you can ensure that a saved print job is not replaced in printer memory by a new job having the same Job name. If a user sends two print jobs with the same User name and Job name, the second job replaces the first job without any prompt. To prevent this, Overwrite job name can automatically change the Job name by adding the date and time the job is sent. This feature also helps you to track when print jobs were sent from the computer.

The selected option applies to a Job name with either Application defined or Custom selected. Overwrite job name options include:

Replace existing file

This option lets the current print job replace an existing job in printer memory, if a job with the same User name and Job name exists.

Use job name + date and time

This option adds the current date and time to the end of the Job name. The previous print job with the same job name remains in the printer memory.

Selecting a job name

You can select a Job name to use with Job storage (e-MPS) features, so that you can find your job in the job list displayed on the printer operation panel. The selected Job name is saved with the print job when the job is sent to printer memory.

- 1 In **Job > Job name**, select a name:

Application defined

This option uses the name of the application document as the Job name. Selecting Don't use application name removes the name of the application so that only the document name appears as the Job name.

Custom

This option uses a unique name for each job. Type a name in the box, to a maximum of 79 characters.

- 2 Select an Overwrite job name option in case a job already exists in printer memory with the same job name:

Replace existing file

If a job with the same user and job name exists, the current print job replaces an existing job in printer memory.

Use job name + date and time

Adds the current date and time to the end of the job name.

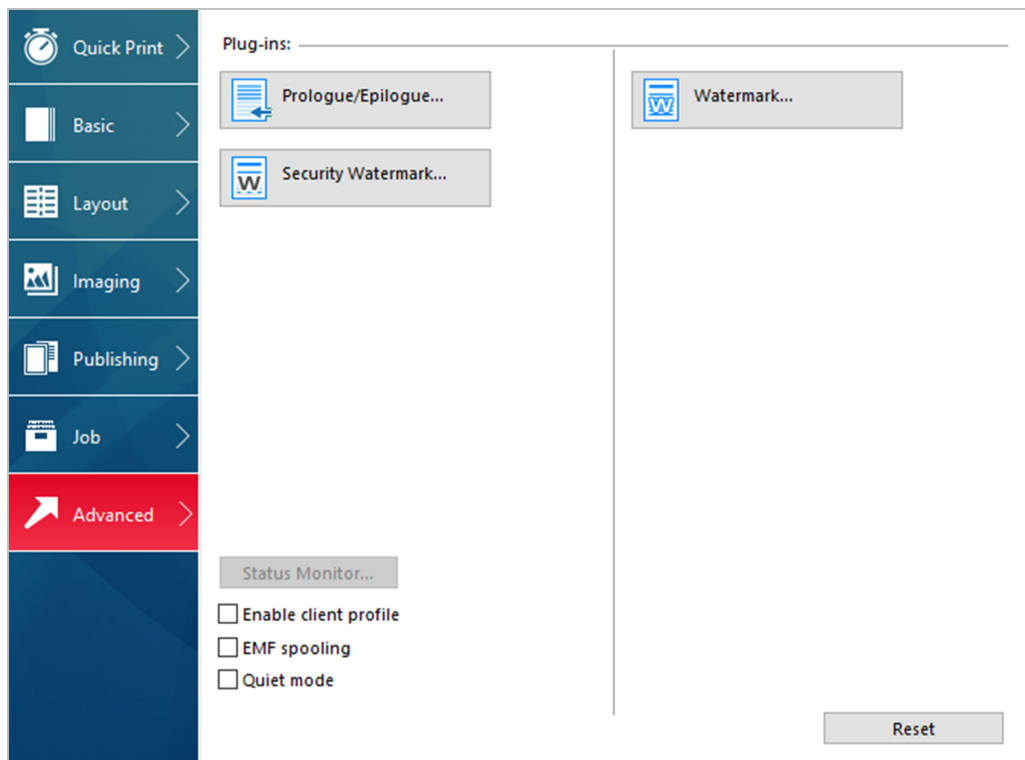
11 Advanced

In the Advanced tab, you can choose special features that extend the capabilities of the printer.

Clicking **Reset** sets the EMF spooling and Quiet mode check boxes back to the last setting you made in the printer driver's Printing Preferences. The Reset button is available when accessing the printer driver from the application's Print dialog box.



Some features and options may not be applicable to your printer.



Prologue/Epilogue

With this feature, you can insert a command file at the beginning of a print job or at the end. The command file uses programming commands from the printer-resident PRESCRIBE language. The Product Library disk includes a PRESCRIBE command language reference guide.

A command file is a set of instructions the printer interprets to produce a given output. For example, a Prologue/Epilogue command file may contain a macro that places a graphic object such as a logo at the top of a letterhead document. Or a heading can be added to carbon copies when using the Carbon copies feature in the Basic tab.

A Prologue/Epilogue file must be available on your computer before it can be added to a print job. To create this file, use a text editor like Windows Notepad. You can edit a Prologue/Epilogue file on your computer by clicking **Edit**. Editing and saving a command file replaces the contents of the existing local or network file.

You can remove a Prologue/Epilogue file from the list by selecting the file and clicking **Delete**. Only the file name is removed from the command file list. The file itself is not deleted, but remains on the network or local computer.

Insertion point options

The insertion point is the location in the print job where the selected Prologue/Epilogue command file is processed by the printer. Each file in the list can be assigned only one insertion point.



The **Start of the page** and **End of the page** insertion points are available only when PDL is set to PCL 5c/5e.

Unassigned

The selected command file is not inserted into the print job. This selection can be used when you are working with multiple command files and want to use some but not others. Select Unassigned for the command files you do not want to use in the print job.

Beginning of the print job

The command file is inserted as the first page of the print job. The document starts printing on the second page.

End of the print job

The command file is inserted as the last page of the print job, which prints after the last page of the document.

Start of the page

The command file is inserted at the top of each page of the print job.

End of the page

The command file is inserted at the bottom of each page of the print job.

Only on odd pages

If Start of the page or End of the page is selected, this option can be selected to insert the command file into all odd-numbered pages.

Only on even pages

If Start of the page or End of the page is selected, this option can be selected to insert the command file into all even-numbered pages.

Pages

If Start of the page or End of the page is selected, this option can be selected to insert the command file into specified pages. In the text box, type individual page numbers separated by commas, or a page range separated by a hyphen.

Selecting and assigning a Prologue/Epilogue file

- 1 In **Advanced > Prologue/Epilogue**, click **Browse** to find a Prologue/Epilogue file (.txt, .log) and add it to the Select Prologue/Epilogue file to insert list.
- 2 Select a file from the list.
- 3 Under Insertion point, select a place to insert the Prologue/Epilogue file, or select **Unassigned**.
- 4 Repeat steps 1-3 to include additional files.
- 5 Click **OK**.

Editing a Prologue/Epilogue file

You can edit a Prologue/Epilogue file on your computer.

- 1 In **Advanced > Prologue/Epilogue**, select a Prologue/Epilogue file name from the list, and click **Edit**.
- 2 After your text editor opens, make your changes to the file.
- 3 Save the file and exit.



Editing and saving a command file replaces the contents of the existing local or network file.

Deleting a Prologue/Epilogue file

- 1 In **Advanced > Prologue/Epilogue**, select a Prologue/Epilogue file name from the list, and click **Delete**.
- 2 In the delete confirmation box, click **Yes** to accept.



Only the file name is removed from the command file list. The file itself is not deleted but remains on the network or local computer.

Watermark

A watermark is a recognizable image or pattern that can be placed on a page or throughout a document. You can choose one of the default watermarks, create your own text, or use an image. The preview area of the dialog box shows how the watermark appears on a page. This is useful for adjusting the appearance and location of the watermark.

Any watermark can be edited, though a limited number of options can be changed for default watermarks.

If you want to use an image for the watermark, an image file must be available on your computer before it can be added to a print job.

Watermark Spacing displays the unit of measurement in inches or millimeters. You can change the unit setting in the User Settings dialog box by accessing **Device Settings > User**. In a client/server environment, the unit setting is unavailable to the client computer.

Watermark should be turned on before using Lock Settings. When Watermark is turned off, using Lock Settings makes it unavailable to all users.

An administrator can ensure that a watermark is printed on all jobs by selecting **Watermark** in **Device Settings > Administrator > Lock Settings**.

Adding or editing watermark text

- 1 In **Advanced > Watermark**, click **New** to create a custom watermark text.



You cannot edit default watermark text options. To edit a custom watermark text, select it from the list.

- 2 Enter your preferred watermark name and text.

- 3 Select your preferred font, size, style, and color.



You can set Color to Black or to a specific grayscale value.

- 4 In **Count**, specify the number of times that the watermark text appears on a page. In **Spacing**, set the distance between the watermark texts.

- 5 Set the angle, and horizontal or vertical position of the watermark.

The **Rotate around center** option sets the center of the watermark as its axis of rotation.

- 6 Under **Print onto**, select the pages where you want to print the watermark:

All pages

Prints the watermark on each page of the document.

First page only

Prints the watermark on the first page.

All pages except first page

Prints the watermark on all pages excluding the first page.

Only on specified pages

Prints the watermark on specific pages.

Outside of front cover

Prints the watermark on the front cover. This option is available when **Cover mode** is selected in the **Publishing** tab. If **Cover mode** is set to

Front / Outside or Front and back / Outside, Outside of front cover is automatically selected.

- 7 Click **Save**, and then click **OK** in all dialog boxes.

Adding or editing a watermark image

- 1 In **Advanced** > **Watermark**, click **New** to create a custom watermark image.



To edit a custom watermark image, select it from the list.

- 2 Enter a watermark name, and then set a watermark image.
- 3 Specify the scaling and opacity values.
The Auto option fits the image in the center of the page.
- 4 Set the angle, and horizontal or vertical position of the watermark.
The Rotate around center option sets the center of the watermark as its axis of rotation.
- 5 Under Print onto, select the pages where you want to print the watermark:

All pages

Prints the watermark on each page of the document.

First page only

Prints the watermark on the first page.

All pages except first page

Prints the watermark on all pages excluding the first page.

Only on specified pages

Prints the watermark on specific pages.

Outside of front cover

Prints the watermark on the front cover. This option is available when Cover mode is selected in the Publishing tab. If Cover mode is set to Front / Outside or Front and back / Outside, Outside of front cover is automatically selected.

- 6 Click **Save**, and then click **OK** in all dialog boxes.

Security Watermark

With this plug-in feature, you can print a nearly invisible image or text against a background pattern. The security watermark appears only when the printed page is photocopied. This helps to identify printed pages that should not be photocopied, or to distinguish between original prints and photocopies. Six standard security watermarks are available as text or image, and you can create custom security watermark text.

The Optional Components Wizard offers the opportunity to install the Security Watermark plug-in following installation of the printer driver.

Security Watermark is available in the Advanced tab when PCL XL is selected as the PDL.

Any security watermark can be edited, though a limited number of options can be changed for default security watermarks.

A notable security watermark feature is the Document guard pattern, which prevents the document from being photocopied, scanned, faxed, or printed from memory. If a scan, fax, or print from memory is attempted, the process is stopped and a message appears on the printer operation panel.

For a security watermark to be effective, it must be nearly invisible in a printed page and clearly visible in a photocopied page. Because printer and driver settings can vary, you must adjust the density and contrast before printing a security watermark. This adjustment is also recommended when changing the background pattern, replacing the toner or printer, and after heavy printing activity.

Selecting Security Watermark sets these driver features to the following values:

- Watermark in the Advanced tab is set to None.
- Resolution in **Imaging > Print Quality > Custom > Custom Quality Settings** is set to 600 dpi.
- Kyocera Image Refinement in **Imaging > Print Quality > Custom > Custom Quality Settings** is set to Off.
- EcoPrint in Quick Print, Basic, or Imaging tab is set to Off.
- Adjustment setting in the Imaging tab is set to None.

The reverse is also true. If these features are changed, then the Security Watermark selection is set to None, and cannot be used.

Security watermark should be turned on before using Lock Settings. When Security watermark is turned off, using Lock Settings makes it unavailable for all users.

The administrator can ensure that a security watermark is printed on all jobs by selecting **Security watermark** in **Device Settings > Administrator > Lock Settings**.

Adding or editing a security watermark

- 1 In **Advanced > Security Watermark**, click **New** to create a custom security watermark.



You cannot edit default security watermark options. To edit a custom security watermark, select it from the list.

- 2 Enter a security watermark name.
- 3 Set up to 3 lines of text.

None

This option leaves the line blank.

User-defined

This option inserts your specified text.

Other predefined options include information from the computer or printer driver, such as Computer name, User name, and Job ID.

4 Select your preferred font, size, style, and angle of the text.

5 Select a design for the security watermark background:

Document guard

The document guard design appears as the security watermark background.

Patterns

Select a predefined pattern for the security watermark background.

6 Select the best density and contrast settings:

Density

Select the shading density of the background pattern.

Contrast

Select the contrast level of the watermark text against the background.



To print a page displaying all contrast options against the selected density, click **Print Sample**. Repeat this for all density options. Select the sample with a nearly invisible security watermark, and then change the settings to match the chosen sample.

7 Under Print onto, select the pages where you want to print the security watermark:

All pages

Prints the security watermark on each page of the document.

First page only

Prints the security watermark on the first page.

All pages except first page

Prints the security watermark on all pages excluding the first page.

Only on specified pages

Prints the security watermark on specific pages.

Outside of front cover

Prints the security watermark on the front cover. This option is available when Cover mode is selected in the Publishing tab. If Cover mode is set to Front / Outside or Front and back / Outside, Outside of front cover is automatically selected.

- 8 To print the first available line of watermark text at the bottom of the page, select **Print as footer**, and then select an alignment option. This is useful because the security watermark itself is not normally visible on the printed page.
- 9 Select **Overprint** for applications such as Microsoft PowerPoint and Internet Explorer where the document content fills the entire page. The security watermark is printed over the document data so that it can appear clearly in a photocopy.
- 10 Click **Save**, and then click **OK** in all dialog boxes.

Status Monitor notification

The Status Monitor displays printer status during printing. You can also set up sound and speech notifications for printer events.

You can start a status monitor for each supported printer. More than one status monitor can be displayed at one time.

Setting Status Monitor notification

- 1 From the Advanced tab, click **Status Monitor**.
- 2 In Status Monitor Notification, select **Enables event notification**.
- 3 To add sound or speech notification, select an event from the Available events list:
 - **Cover open**
 - **Paper jam**
 - **Add paper**
 - **Sleep**
 - **Add toner**
 - **Toner low**
 - **Not connected**
 - **Printing completed**
 - **Others**
- 4 Under Sound file / Text to Speech, click to the right of the chosen event, and then:
 - To add a sound file, type the location of a sound file (.wav), or click **Browse** to find a sound file located on your computer.
 - To add speech, type your preferred text. The Microsoft Text to Speech feature reads your typed text and plays it back in a spoken voice.
- 5 To add sound or speech to other events, repeat steps 3 and 4.
- 6 Click **OK**.

Viewing Status Monitor

- 1 You can view information about the print job and the printer in the status monitor:
 - The job tab displays information about each print job. To cancel a job, right-click on the job and click **Cancel**.
 - The paper source tab displays information about each cassette and the multipurpose tray.
 - The toner tab displays the toner level.
 - The alert tab displays Ready or event information. For multiple events, click each event to view details.
- 2 You can hide or show details by clicking the arrow.
- 3 To display a list of options, click the tools icon, and select available options:

Command Center RX

For a network connection, opens a web browser to display the printer home page. This option is unavailable for a USB connection.

Notification

Opens the Status Monitor Notification dialog box.

www.kyoceradocumentsolutions.com

Opens a web browser to the KYOCERA Document Solutions home page.

Exit

Closes the status monitor.

EMF spooling

EMF (Enhanced MetaFile) is a spool file format used in printing by the Microsoft Windows operating system. When a print job is sent from an application, it is transferred to the spool file. The application writes to and the printer driver reads from the spool file simultaneously. For multiple or large documents, this quickly returns application control to the user while the printer is still printing the document.



When Data passthrough is selected in the Page Description Languages (PDL) dialog box, EMF spooling is unavailable.

Selecting EMF spooling

- 1 In the Advanced tab, select **EMF Spooling**.
- 2 Click **OK**.

Quiet mode

With this feature, you can print in a quieter mode than normal by selecting the Quiet mode check box. If you permit quiet mode for each job on the operation panel, then Quiet mode in the driver is enabled during printing.

Enabling client custom paper size

Client custom paper size refers to page size settings saved on a client computer. You have the choice to use your local custom sizes or the server custom sizes. This feature is intended for the client computer in a client/server environment.

- 1 From the Advanced tab, do either of the following:
 - Select **Enable client custom paper size** to use custom page sizes locally in the driver.
 - Clear **Enable client custom paper size** to select custom sizes from the server to apply to print jobs created by the driver. Server profiles are read-only.
- 2 Click **OK**.

Enabling client profile

Client profile refers to profile settings saved on a client computer. This feature is available in both client computer and the server in a client/server environment.

In a server, an administrator can set the default value of the client computer to use either server or client profiles.

In a client computer, you can use your local profiles or the server profiles. If you are logged in using a privileged account, such as a local administrative account or a domain administrative account, then the server settings are applied to the client computer.

- 1 From the Advanced tab, do either of the following:
 - Select **Enable client profile** to use custom profiles locally in the driver to apply to print jobs.
 - Clear **Enable client profile** to use profiles from the server to apply to print jobs. Server profiles are read-only.
- 2 Click **OK**.

KYOCERA Document Solutions America, Inc.**Headquarters**

225 Sand Road,
Fairfield, New Jersey 07004-0008, USA
Phone: +1-973-808-8444
Fax: +1-973-882-6000

Latin America

8240 NW 52nd Terrace, Suite 301
Miami, Florida 33166, USA
Phone: +1-305-421-6640
Fax: +1-305-421-6666

KYOCERA Document Solutions Canada, Ltd.

6120 Kestrel Rd., Mississauga, ON L5T 1S8,
Canada
Phone: +1-905-670-4425
Fax: +1-905-670-8116

KYOCERA Document Solutions**Mexico, S.A. de C.V.**

Calle Arquimedes No. 130, 4 Piso, Colonia Polanco
Chapultepec, Delegacion Miguel Hidalgo,
Ciudad de Mexico, C.P. 11560
Phone: +52-555-383-2741
Fax: +52-555-383-7804

KYOCERA Document Solutions Brazil, Ltda.

Alameda África, 545, Pólo Empresarial Consbrás,
Tamboré, Santana de Parnaíba, State of São Paulo,
CEP 06543-306, Brazil
Phone: +55-11-2424-5353
Fax: +55-11-2424-5304

KYOCERA Document Solutions Chile SpA

Jose Ananias 505, Macul. Santiago, Chile
Phone: +56-2-2670-1900
Fax: +56-2-2350-7150

KYOCERA Document Solutions**Australia Pty. Ltd.**

Level 3, 6-10 Talavera Road North Ryde NSW, 2113,
Australia
Phone: +61-2-9888-9999
Fax: +61-2-9888-9588

KYOCERA Document Solutions**New Zealand Ltd.**

Ground Floor, 19 Byron Avenue, Takapuna, Auckland,
New Zealand
Phone: +64-9-415-4517
Fax: +64-9-415-4597

KYOCERA Document Solutions**Asia Limited**

13/F., Mita Centre, 552-566, Castle Peak Road Tsuen
Wan, New Territories, Hong Kong
Phone: +852-2496-5678
Fax: +852-2610-2063

KYOCERA Document Solutions**(China) Corporation**

8F, No. 288 Nanjing Road West, Huangpu District,
Shanghai, 200003, China
Phone: +86-21-5301-1777
Fax: +86-21-5302-8300

KYOCERA Document Solutions**(Thailand) Corp., Ltd.**

335 Ratchadapisek Road, Wongsawang, Bangsue,
Bangkok 10800,
Thailand
Phone: +66-2-586-0333
Fax: +66-2-586-0278

KYOCERA Document Solutions**Singapore Pte. Ltd.**

12 Tai Seng Street #04-01A, Luxasia Building,
Singapore 534118
Phone: +65-6741-8733
Fax: +65-6748-3788

KYOCERA Document Solutions**Hong Kong Limited**

16/F., Mita Centre, 552-566, Castle Peak Road Tsuen
Wan, New Territories, Hong Kong
Phone: +852-3582-4000
Fax: +852-3185-1399

KYOCERA Document Solutions**Taiwan Corporation**

6F., No.37, Sec. 3, Minquan E. Rd., Zhongshan Dist.,
Taipei 104, Taiwan R.O.C.
Phone: +886-2-2507-6709
Fax: +886-2-2507-8432

KYOCERA Document Solutions Korea Co., Ltd.

#10F Daewoo Foundation Bldg 18, Toegye-ro, Jung-
gu, Seoul, Korea
Phone: +822-6933-4050
Fax: +822-747-0084

KYOCERA Document Solutions**India Private Limited**

Second Floor, Centrum Plaza, Golf Course Road,
Sector-53, Gurgaon, Haryana 122002, India
Phone: +91-0124-4671000
Fax: +91-0124-4671001

KYOCERA Document Solutions Europe B.V.

Bloemlaan 4, 2132 NP Hoofddorp,
The Netherlands
Phone: +31(0)20-654-0000
Fax: +31(0)20-653-1256

KYOCERA Document Solutions Nederland B.V.

Beechavenue 25, 1119 RA Schiphol-Rijk,
The Netherlands
Phone: +31-20-5877200
Fax: +31-20-5877260

KYOCERA Document Solutions (U.K.) Limited

Eldon Court, 75-77 London Road,
Reading, Berkshire RG1 5BS, United Kingdom
Phone: +44-118-931-1500
Fax: +44-118-931-1108

KYOCERA Document Solutions Italia S.p.A.

Via Monfalcone 15, 20132, Milano, Italy
Phone: +39-02-921791
Fax: +39-02-92179-600

KYOCERA Document Solutions Belgium N.V.

Sint-Martinusweg 199-201 1930 Zaventem, Belgium
Phone: +32-2-7209270
Fax: +32-2-7208748

KYOCERA Document Solutions France S.A.S.

Espace Technologique de St Aubin
Route de l'Orme 91195 Gif-sur-Yvette CEDEX, France
Phone: +33-1-69852600
Fax: +33-1-69853409

KYOCERA Document Solutions Espana, S.A.

Edificio Kyocera, Avda. de Manacor No.2, 28290 Las
Matas (Madrid), Spain
Phone: +34-91-6318392
Fax: +34-91-6318219

KYOCERA Document Solutions Finland Oy

Atomitie 5C, 00370 Helsinki, Finland
Phone: +358-9-47805200
Fax: +358-9-47805212

KYOCERA Document Solutions**Europe B.V., Amsterdam (NL) Zürich Branch**

Hohlstrasse 614, 8048 Zürich, Switzerland
Phone: +41-44-9084949
Fax: +41-44-9084950

KYOCERA Bilgitas Document Solutions**Turkey A.S.**

Altunizade Mah. Prof. Fahrettin Kerim Gökay Cad.
No:45
34662 Üsküdar İstanbul, Turkey
Phone: +90-216-339-0020
Fax: +90-216-339-0070

KYOCERA Document Solutions**Deutschland GmbH**

Otto-Hahn-Strasse 12, 40670 Meerbusch, Germany
Phone: +49-2159-9180
Fax: +49-2159-918100

KYOCERA Document Solutions Austria GmbH

Wienerbergstraße 11, Turm A, 18. OG, 1100 Wien,
Austria
Phone: +43-1-863380
Fax: +43-1-86338-400

KYOCERA Document Solutions Nordic AB

Borgarfjordsgatan 11, 164 40 Kista, Sweden
Phone: +46-8-546-550-00
Fax: +46-8-546-550-10

KYOCERA Document Solutions Norge Nuf

Olaf Helsetsv. 6, 0619 Oslo, Norway
Phone: +47-22-62-73-00
Fax: +47-22-62-72-00

KYOCERA Document Solutions Danmark A/S

Ejby Industrivej 60, DK-2600 Glostrup, Denmark
Phone: +45-70223880
Fax: +45-45765850

KYOCERA Document Solutions Portugal Lda.

Rua do Centro Cultural, 41 (Alvalade) 1700-106
Lisboa,
Portugal
Phone: +351-21-843-6780
Fax: +351-21-849-3312

KYOCERA Document Solutions**South Africa (Pty) Ltd.**

KYOCERA House, Hertford Office Park,
90 Bekker Road (Cnr. Allandale), Midrand, South Africa
Phone: +27-11-540-2600
Fax: +27-11-466-3050

KYOCERA Document Solutions Russia LLC.

Building 2, 51/4, Schepkina St., 129110, Moscow,
Russia
Phone: +7(495)741-0004
Fax: +7(495)741-0018

KYOCERA Document Solutions Middle East

Dubai Internet City, Bldg. 17,
Office 157 P.O. Box 500817, Dubai,
United Arab Emirates
Phone: +971-04-433-0412

KYOCERA Document Solutions Czech, s.r.o.

Harfa Office Pari, Českomoravská 2420/15, Praha 9
Phone: +420-222-562-246

KYOCERA Document Solutions Inc.

2-28, 1-chome, Tamatsukuri, Chuo-ku
Osaka 540-8585, Japan
Phone: +81-6-6764-3555
<https://www.kyoceradocumentsolutions.com>