

# Driver Distributor User Guide

2023.09  
DDUGKDEN121



## Legal notes

Unauthorized reproduction of all or part of this guide is prohibited.

The information in this guide is subject to change without notice.

We cannot be held liable for any problems arising from the use of this product, regardless of the information herein.

## Regarding trademarks

Microsoft®, Windows®, and Active Directory® are registered trademarks of Microsoft Corporation in the U.S. and/or other countries.

All other brand and product names herein are registered trademarks or trademarks of their respective companies.

# Table of Contents

**Chapter 1 Product overview**

---

Documentation.....	1-2
Conventions.....	1-2
System requirements.....	1-2

**Chapter 2 Creating printer driver packages**

---

**Chapter 3 Deploying printer driver packages**

---

**Chapter 4 Troubleshooting**

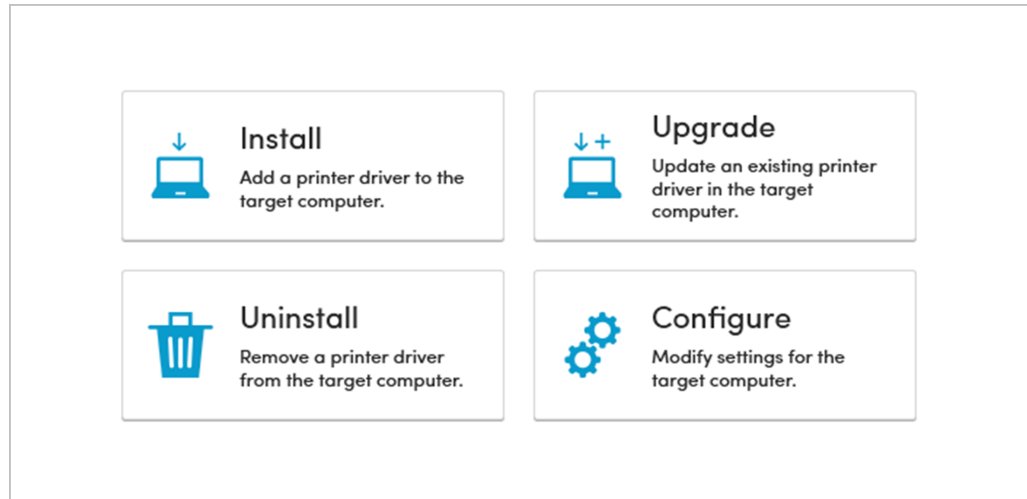
---





# 1 Product overview

Driver Distributor is a utility application that system administrators can use to create and customize printer driver packages. These packages include one or more of the following tasks:



## Install

Add a new printer driver in one or more target computers. You can either select a new printer driver from an online list or specify a new printer driver INF file from your computer.

## Upgrade

Update and overwrite an existing printer driver in one or more target computers with a newer driver version. You can either select the correct printer driver from an online list or specify the correct printer driver INF file from your computer.

## Configure

Modify and overwrite the current settings of an existing printer driver in one or more target computers. You can either select the correct printer driver from an online list or specify the correct printer driver INF file from your computer.

## Uninstall

Remove one or more existing printer drivers from one or more target computers. You can create a search query with a filter type and filter text having some or all parts of the printer name. The search query is used to find and select one or more existing printer drivers from one or more target computers.

After creating a printer driver package (\*.exe), system administrators can then distribute the executable file to one or more client users. Client users can run the executable file in the target computers. The tasks specified by the system

administrator in the executable file are performed consistently across multiple target computers.

System administrators can also save a copy of the printer driver package as a template (\*.kdd). In Driver Distributor, system administrators can modify the saved package templates at a later time.



Some features and options may vary depending on your printer.

## Documentation

This guide helps:

- System administrators create printer driver packages.
- Client users deploy printer driver packages created using the application.

## Conventions

The following conventions may be used in this guide:

- **Bold text** is used for menu items and buttons
- Screen, text box, and drop-down menu titles are spelled and punctuated exactly as they are displayed on the screen
- *Italics* are used for document titles
- Text or commands that a user enters are displayed as text in a different font or in a text box as shown in these examples:

1. On the command line, enter `net stop program`
2. Create a batch file that includes these commands:

```
net stop program
gbak -rep -user PROGRAMLOG.FBK
```

- Icons are used to draw your attention to certain pieces of information. Examples:



This indicates information that is useful to know.



This indicates important information that you should know, including such things as data loss if the procedure is not done properly.

## System requirements

This application requires Microsoft .NET Framework 4.8 or later. You can run this application in the following operating systems:

- Windows 11
- Windows 10
- Windows Server 2022
- Windows Server 2019

- Windows Server 2016

This application supports only the following languages:

- English
- Japanese



## 2 Creating printer driver packages

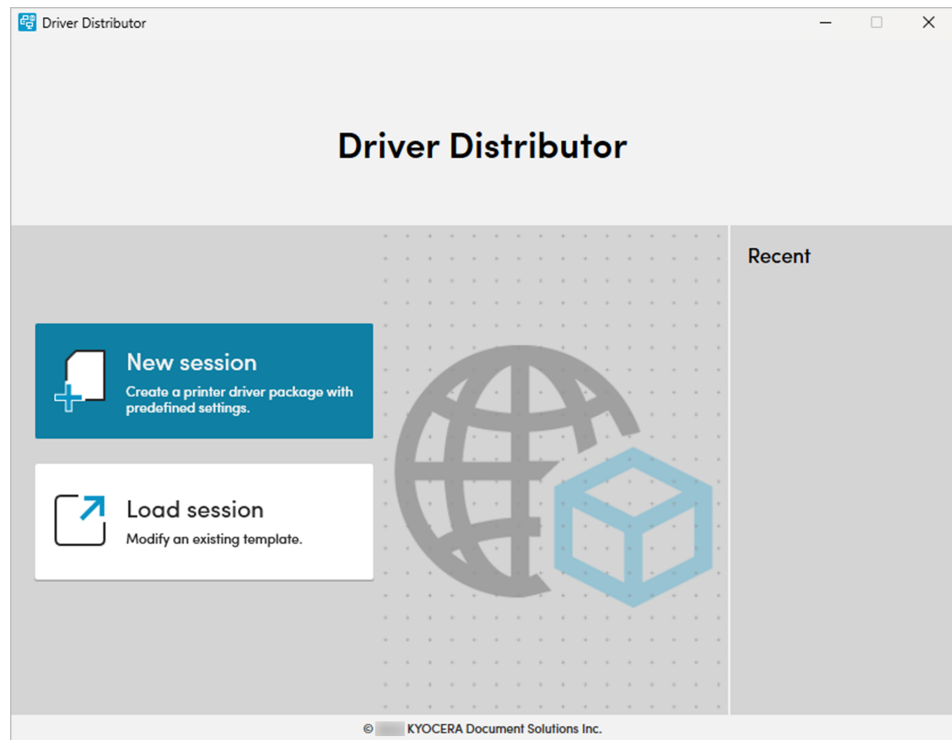
System administrators can select and configure one or more of the following tasks into a printer driver package:

- Install
- Upgrade
- Configure
- Uninstall

**1** In File Explorer, browse for and run Driver Distributor.

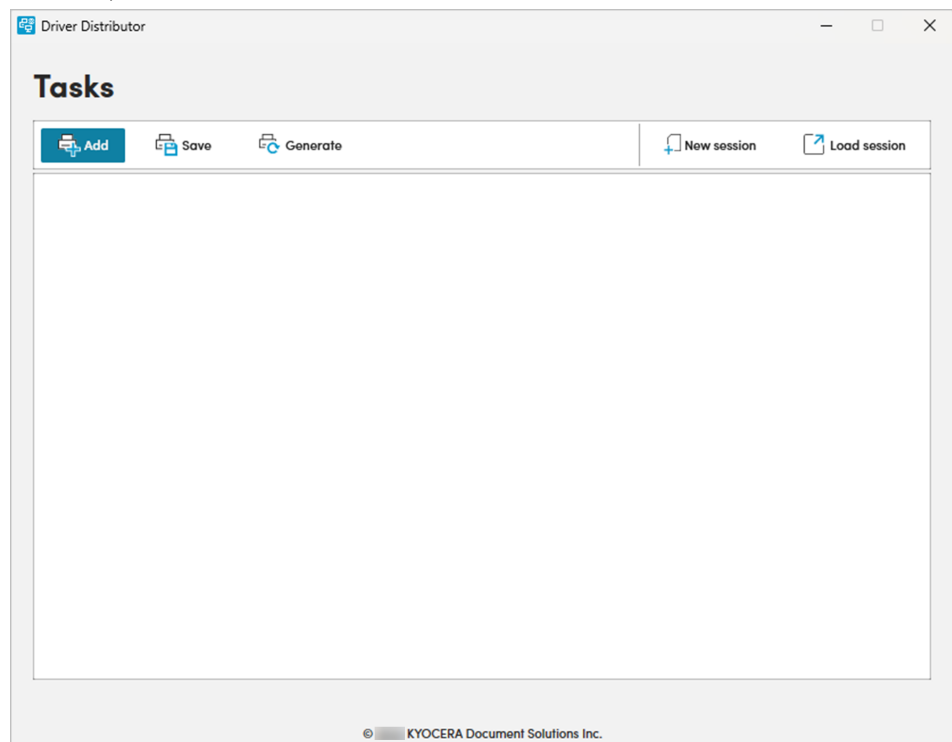


**2** Select **New session**.

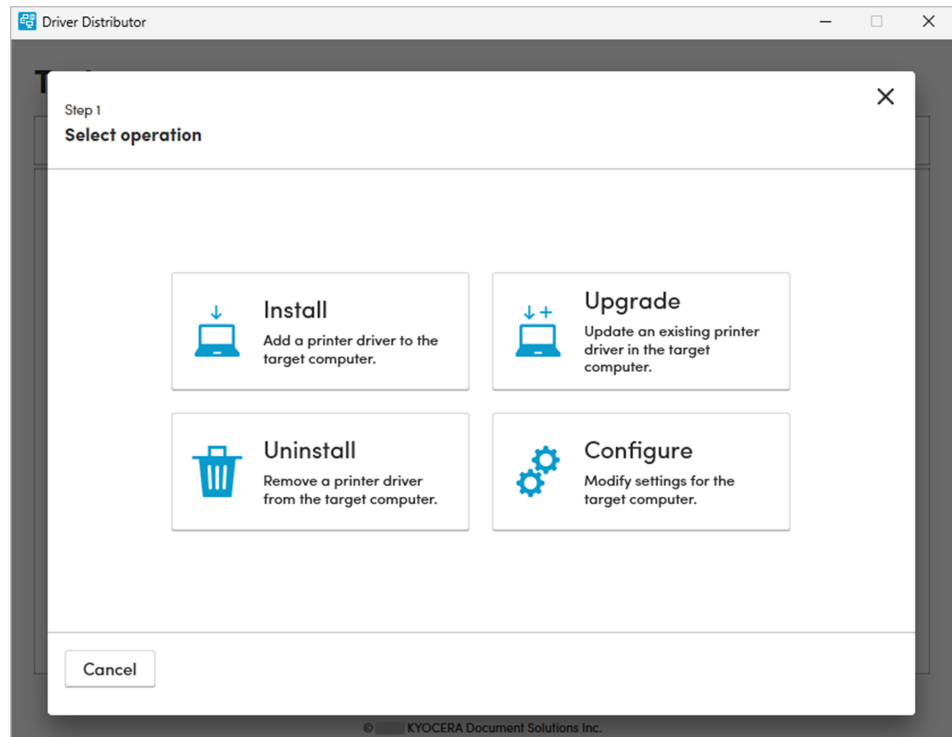


To modify an existing package template, select an item in Recent, or select **Load session**, then browse for the package template.

**3** In Tasks, select **Add**.

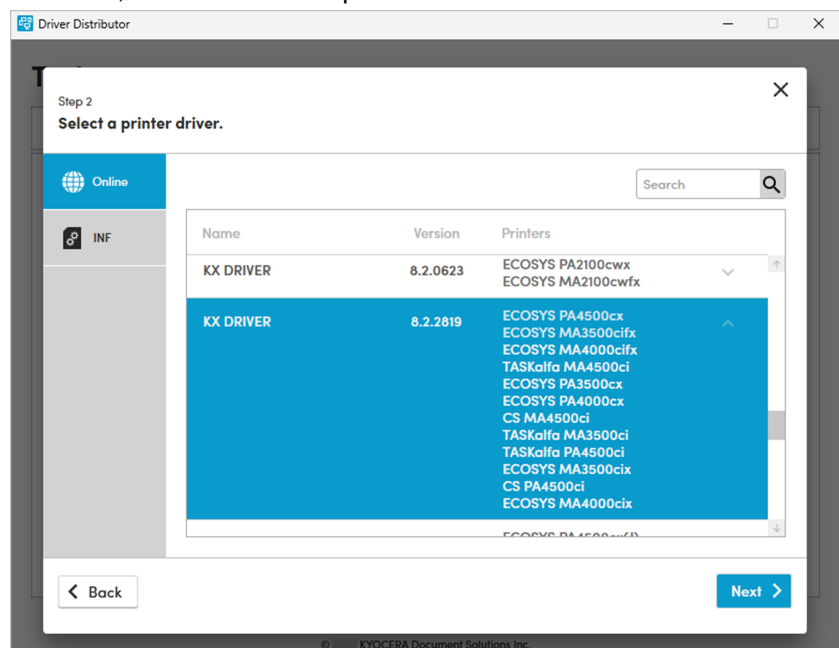


- 4 Depending on your preferred task, select **Install**, **Upgrade**, **Configure**, or **Uninstall**.



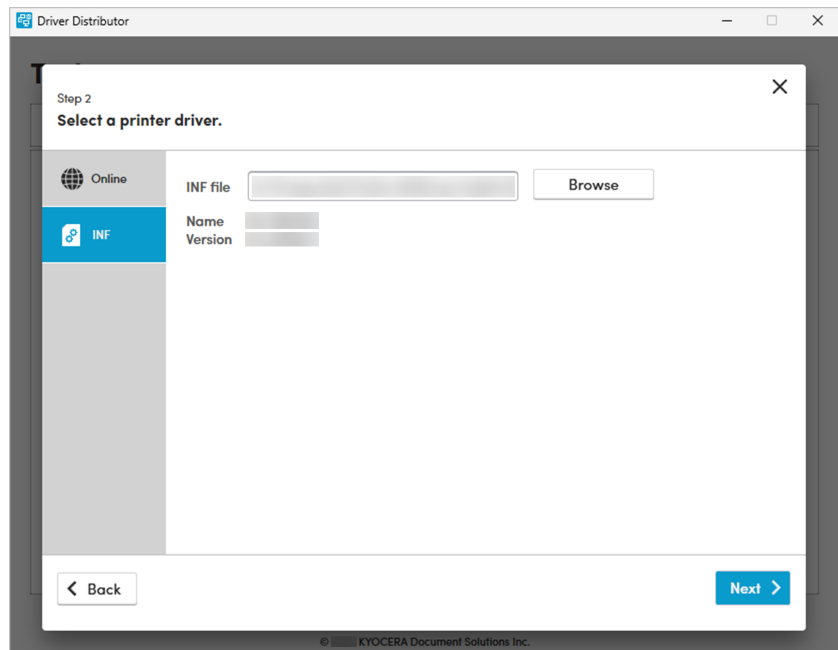
The following steps are for the Install, Upgrade, and Configure tasks. These steps are the same for any of these tasks.

- a. Do either of the following:
- In Online, select the correct printer driver.



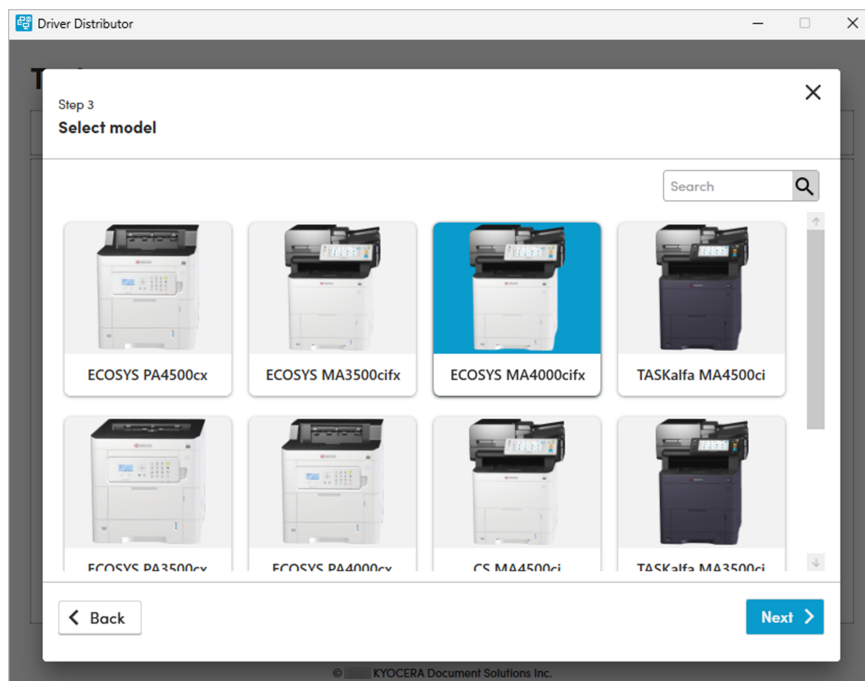


- Make sure that your printer model is listed in Printers, and your computer is connected to the internet. If necessary, enter your proxy credentials.
  - If you cannot find the correct printer driver version in Online, then get a copy of the printer driver installer from the Product Library disc that came with your printer, or from <https://kyocera.info>. After getting a copy of the installer, in Driver Distributor, select **INF**, then browse for the correct `OEMSETUP.inf` file from the installer.
- In INF, browse for the correct `OEMSETUP.inf` file from the Product Library disc that came with your printer or from the installer that you downloaded from <https://kyocera.info>.



- b. Select **Next**.
- c. Select the correct printer model for the client user, then select **Next**.

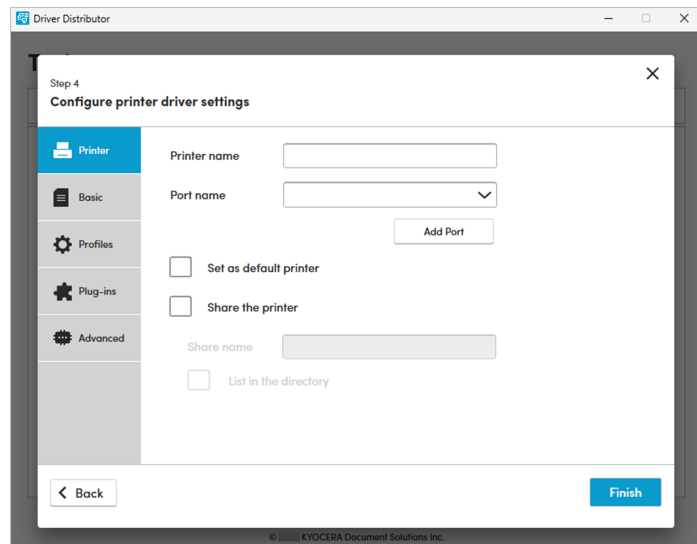




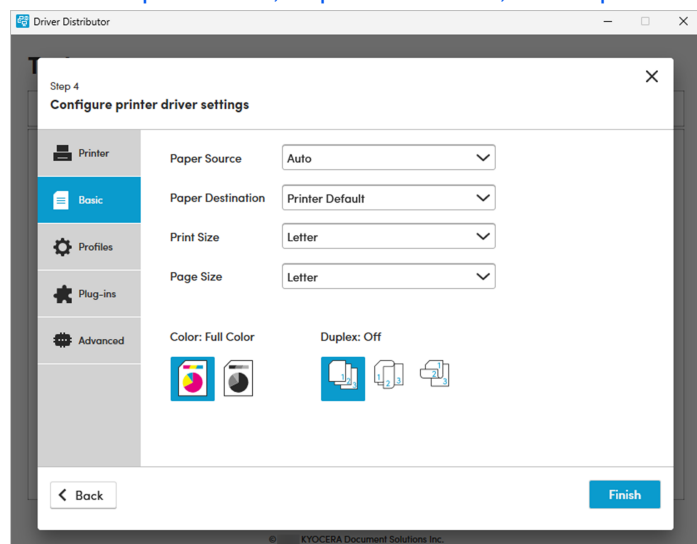
d. Review or modify any of the available settings.



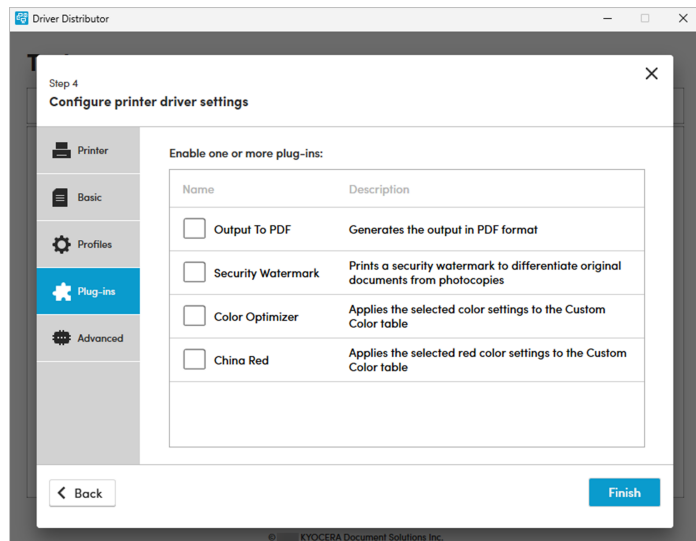
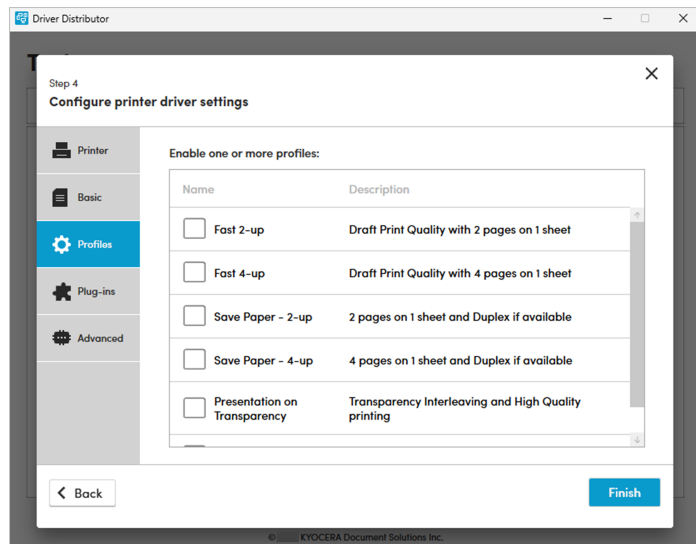
- Make sure that you specify the correct IP address of your printer. Select a Port name or select **Add Port** to manually configure a port connected to the target printer.
- You can specify the Printer name, set the printer as the default printing device, or share the printer as a network device.
- For Upgrade or Configure tasks, make sure to specify the correct printer name. In the target computer, go to **Control Panel > Hardware and Sound > Devices and Printers**, then make sure to review the name of the printer to be upgraded or configured.



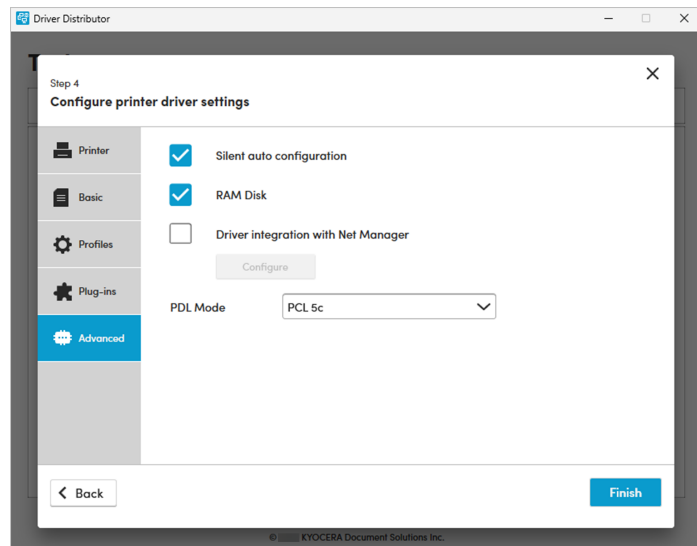
- You can modify some default settings for the printer driver, such as Paper Source, Paper Destination, and Duplex.



- You can enable one or more printer profiles or plug-ins.



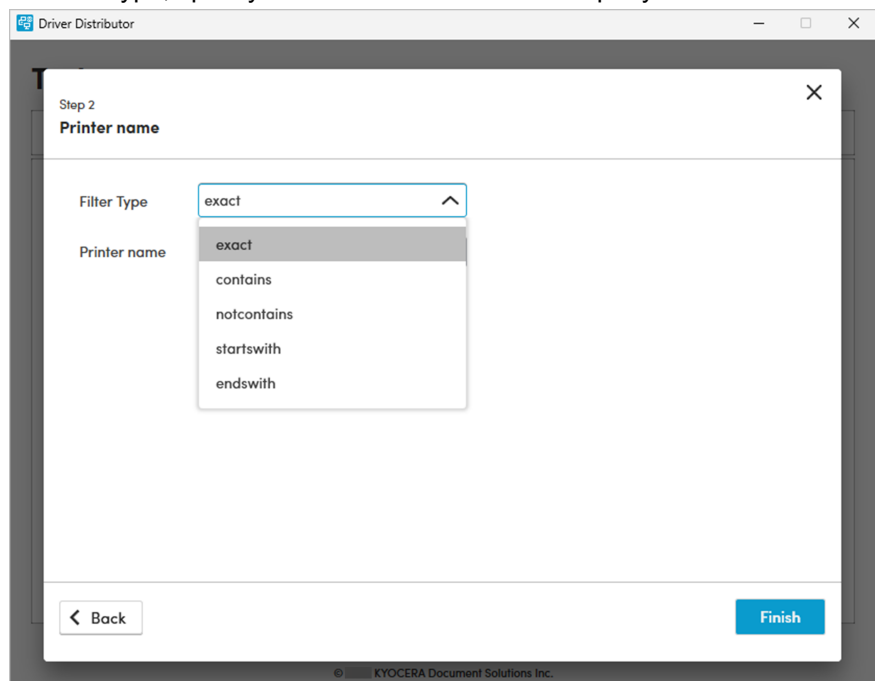
- You can configure some Device Settings, such as Silent auto configuration, Driver integration with Net Manager, and default PDL Mode.



e. Select **Finish**.

The following steps are for the Uninstall task.

a. In Filter Type, specify the condition of the search query.



Filter Type	Description
<b>exact</b>	Only the printer with a name that matches the exact text of the search query will be uninstalled.

Filter Type	Description
<b>contains</b>	The printer with a name that includes the text of the search query will be uninstalled.
<b>notcontains</b>	Any printer with a name that excludes the text of the search query will be uninstalled.
<b>startswith</b>	Any printer with a name that begins with the text of the search query will be uninstalled.
<b>endswith</b>	Any printer with a name that ends with the text of the search query will be uninstalled.

- b. In Printer name, specify the text of the search query.

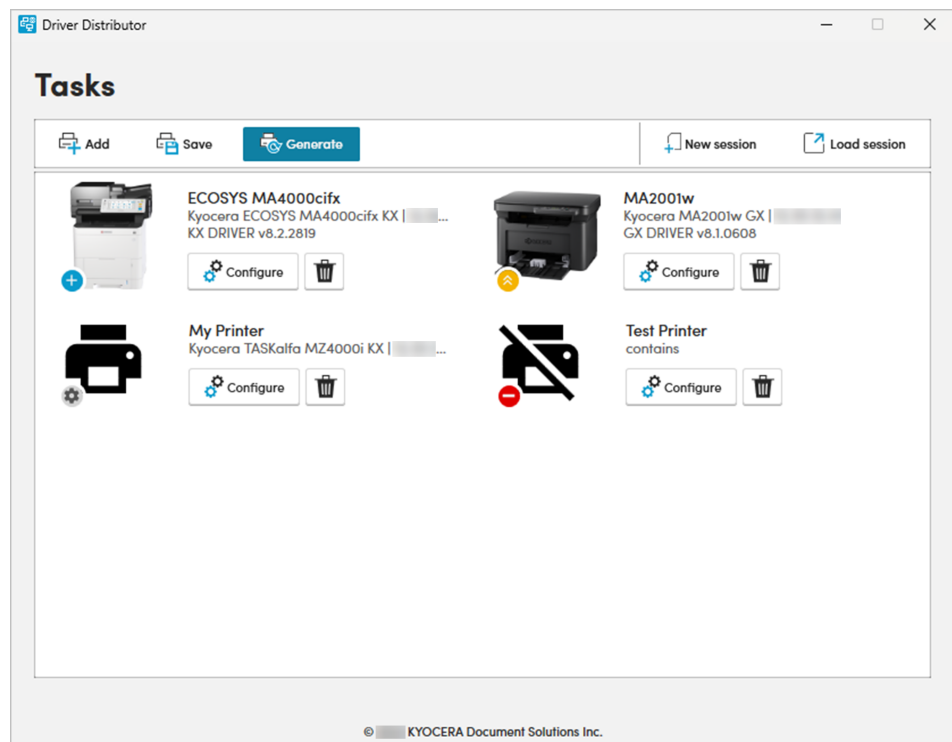
The screenshot shows a window titled "Driver Distributor" with a sub-dialog titled "Step 2: Printer name". Inside the dialog, there is a "Filter Type" dropdown menu currently set to "contains", and a "Printer name" text input field containing the text "Test Printer". At the bottom left of the dialog is a "Back" button, and at the bottom right is a blue "Finish" button. The footer of the window indicates "© KYOCERA Document Solutions Inc."



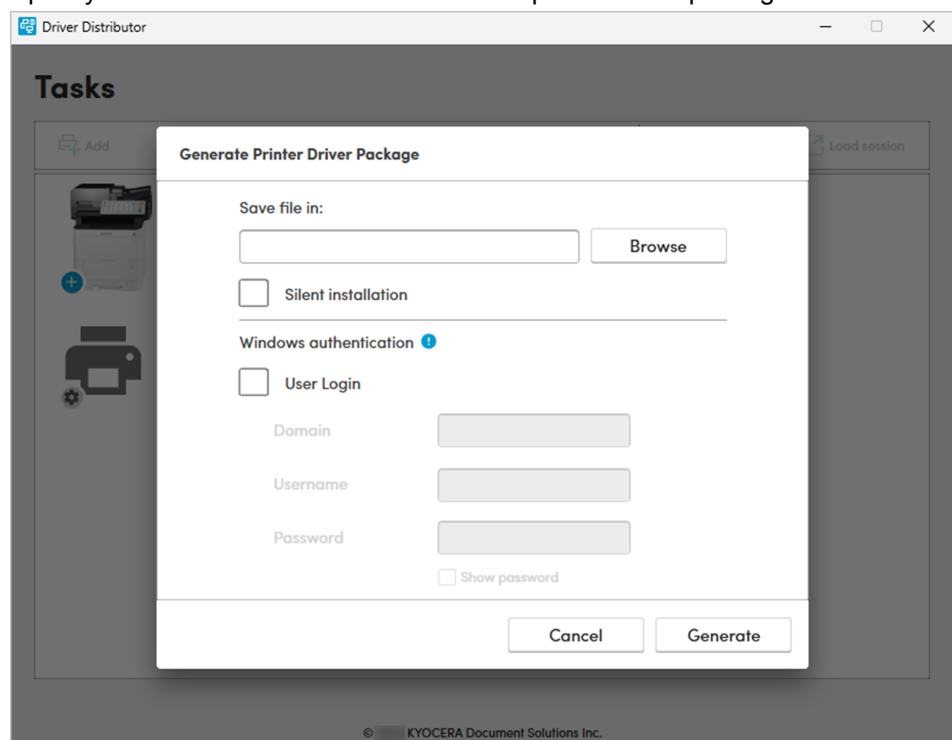
In the target computer, go to **Control Panel > Hardware and Sound > Devices and Printers**, then make sure to review the name of the printer to be uninstalled.

- c. Select **Finish**.

- 5** Review or modify the tasks, then select **Generate**.



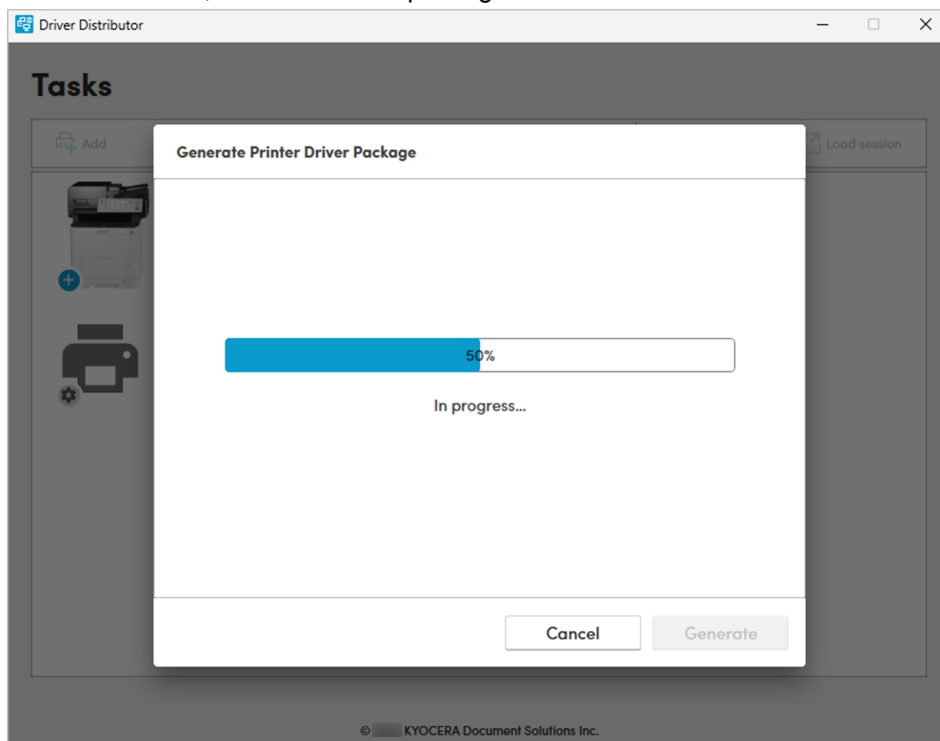
## 6 Specify the file name and file location of the printer driver package.



- To run the package automatically in the target computer without any configuration or user interface, select **Silent installation**.

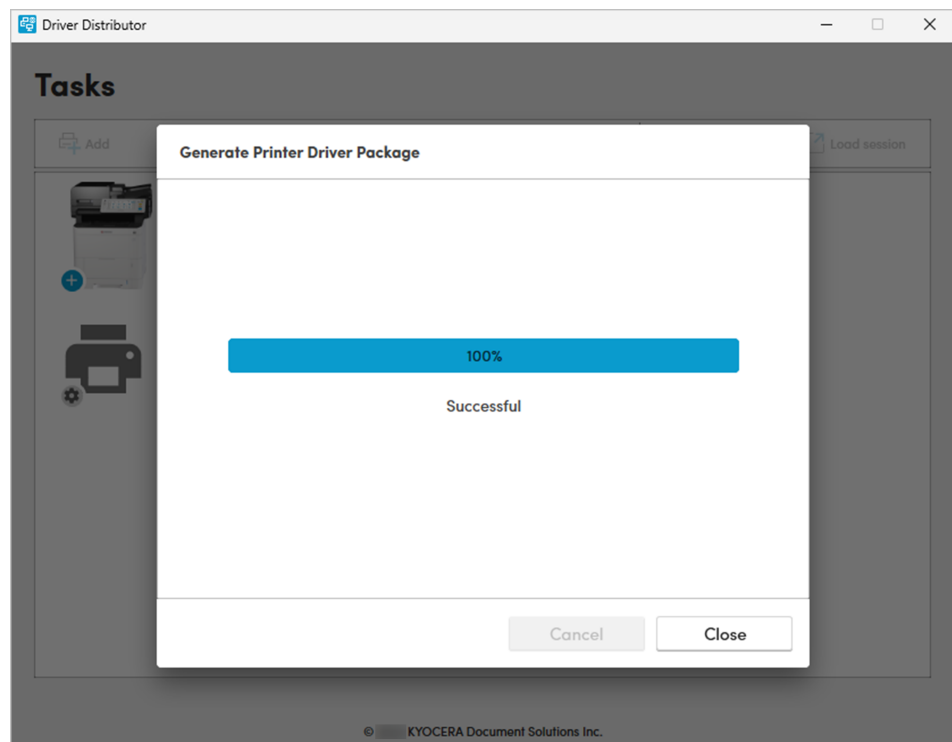
- To run the package in the target computer using the administrator user name and password, select **User Login**, then enter the correct administrator user name and password.

**7** Select **Generate**, then review the package creation status.



The package is saved as an executable file (\*.exe).

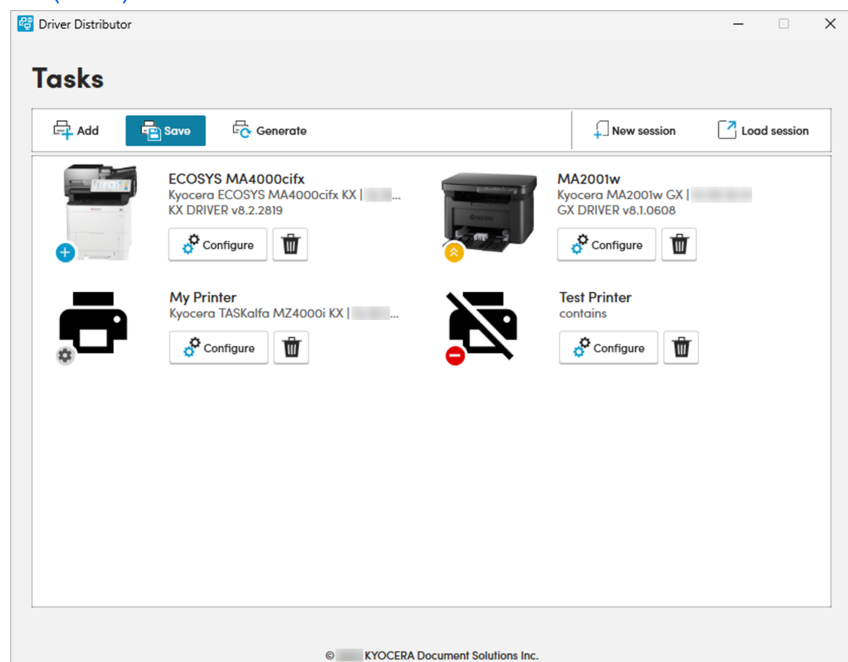
**8** Select **Close**.



After the package generation completes, the package is saved as an executable file (\*.exe). You can then distribute the executable file (\*.exe) to one or more client users.

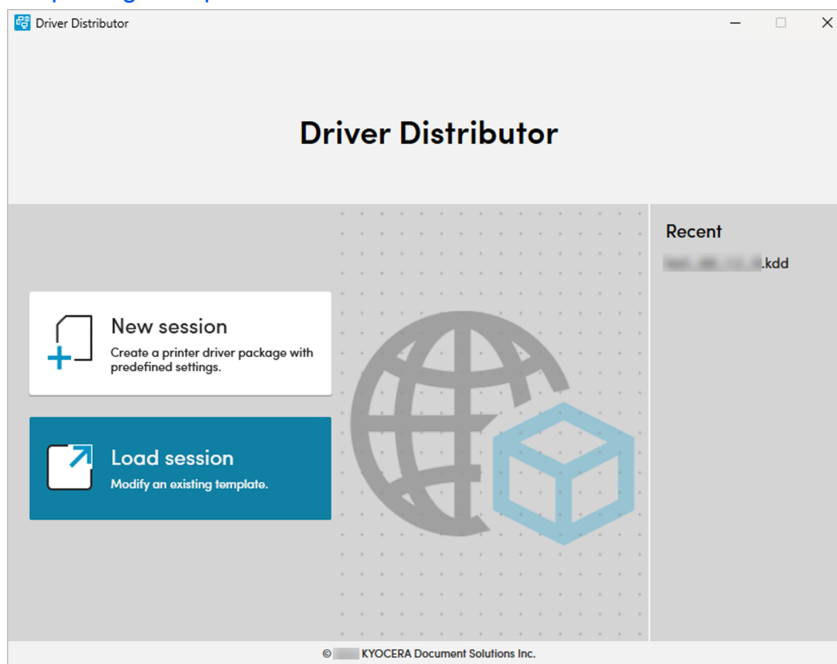


- To create an editable package template, select **Save**, then specify the file name and file location. The package template is saved as a KDD file (\*.kdd).





- To open and modify a package template (\*.kdd), run Driver Distributor, then select an item in Recent, or select **Load session**, then browse for the package template.





### 3 Deploying printer driver packages

System administrators can distribute the printer driver package (\*.exe) generated by this application to one or more client users. In each target computer, client users can run the printer driver package using the following steps:

- 1 In File Explorer, browse to the printer driver package that came from your system administrator.
- 2 Run the package. If necessary, allow the package to make changes to the computer.

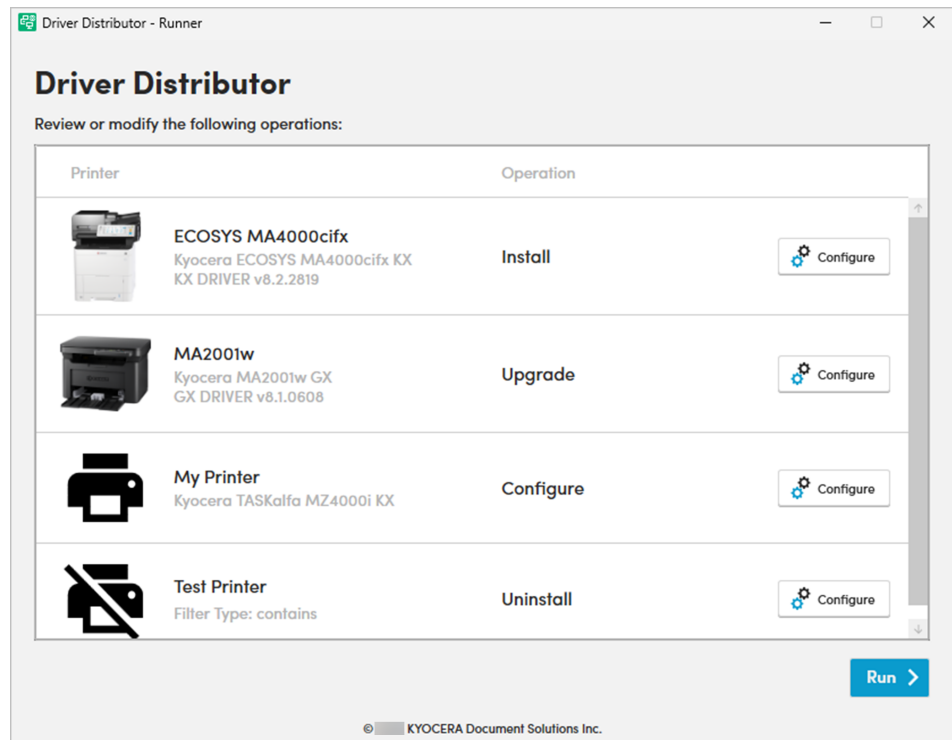


If your system administrator specified Silent installation, then the package runs automatically in the background without any configuration or user interface. A Driver Distributor icon appears on your taskbar, as shown in the following example:

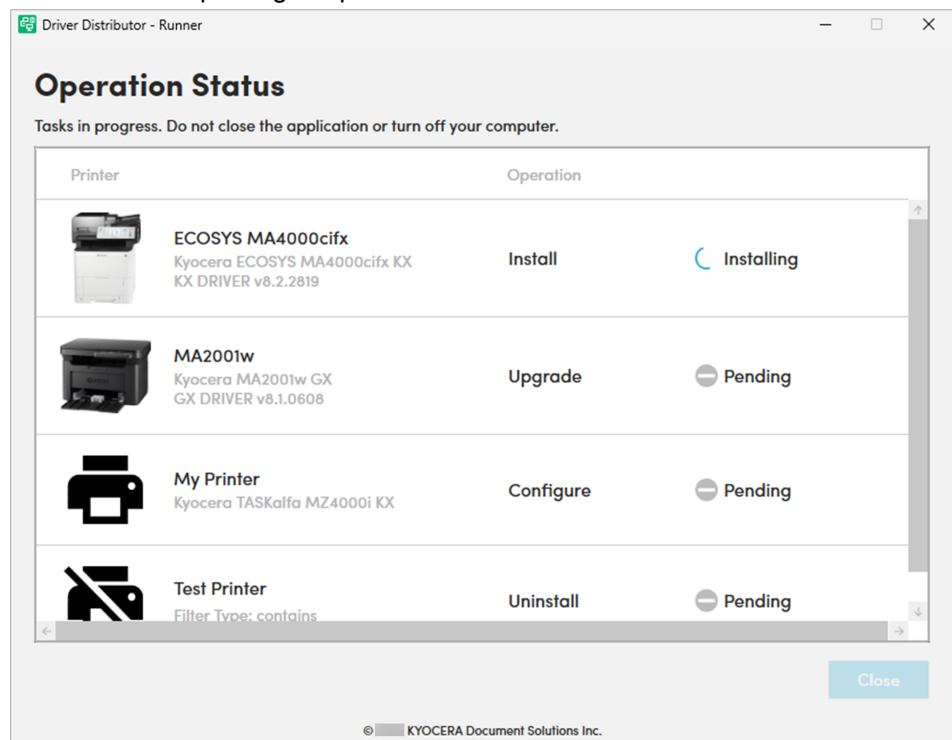


After Silent installation finishes, this icon disappears. You can then review the printers listed in **Control Panel > Devices and Printers**.

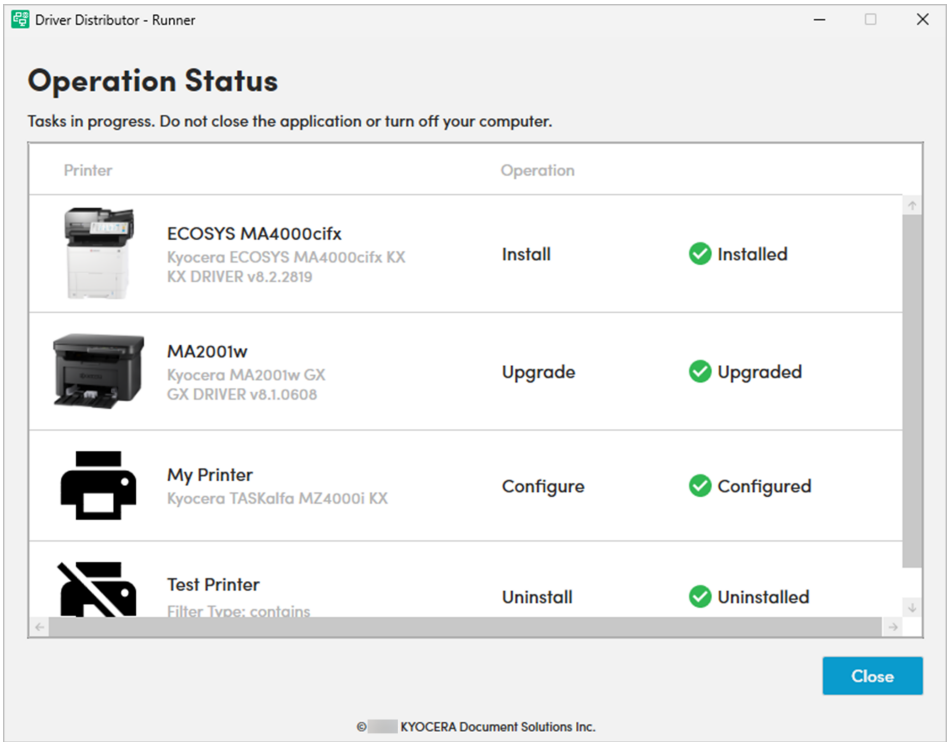
- 3 Review or configure the operations, then select **Run**.



- 4 Review the status of each operation. If one or more operations fail, resolve any issues before repeating the process.



- 5 Select **Close**.



After deploying the printer driver package, you can then review the printers listed in **Control Panel > Devices and Printers**.



## 4 Troubleshooting

The following table includes the most common problems that may be encountered when creating a printer driver package. For each problem listed, you can do any of the recommended solutions.

Problem	Possible cause	Recommended solution
In Online, the driver that I want is not listed.	The driver may not be supported by the application.	Get a copy of the printer driver installer from the Product Library disc that came with your printer, or from <a href="https://kyocera.info">https://kyocera.info</a> .
I encountered an error after selecting an *.inf file.	<ul style="list-style-type: none"><li>• The *.inf file may be corrupted.</li><li>• You may have selected the wrong *.inf file for your printer.</li><li>• This application supports only Kyocera printer INF files (OEMSETUP.inf).</li></ul>	After getting a copy of the printer driver installer, in Driver Distributor, select <b>INF</b> , then browse for the correct OEMSETUP.inf file from the installer. For more information, see <i>Creating printer driver packages</i> .
In Select model, the printer I want is not listed.	You may have selected the wrong printer driver.	<ul style="list-style-type: none"><li>• In Online, select a supported printer driver, then make sure that your printer model is listed under Printers.</li><li>• In INF, make sure that you select the correct OEMSETUP.inf file for your printer.</li></ul>

Problem	Possible cause	Recommended solution
In Online, after selecting a supported printer driver, the download takes too long or does not finish.	<ul style="list-style-type: none"> <li>Your network firewall settings may be affecting the download operation.</li> <li>There may be interruptions in your network service.</li> </ul>	<ul style="list-style-type: none"> <li>Review or modify your network firewall settings, and make sure that your computer is connected to the internet.</li> <li>Get a copy of the printer driver installer from the Product Library disc that came with your printer, or from <a href="https://kyocera.info">https://kyocera.info</a>. After getting a copy of the printer driver installer, in Driver Distributor, select <b>INF</b>, then browse for the correct <code>OEMSETUP.inf</code> file from the installer. For more information, see <i>Creating printer driver packages</i>.</li> </ul>
Errors were encountered when processing tasks in the printer driver package.	When generating the printer driver package, you may have incorrectly configured one or more settings or selections.	Perform <i>Creating printer driver packages</i> , then make sure that your settings and selections are correct.





For the KYOCERA contact in your region, see Sales Sites sections here.  
**<https://www.kyoceradocumentsolutions.com/company/directory.html>**