



FS-2100D/FS-2100DN/FS-4100DN/
FS-4200DN/FS-4300DN

Printer Driver

User Guide



Legal Notes

Unauthorized reproduction of all or part of this guide is prohibited.

The information in this guide is subject to change without notice.

We cannot be held liable for any problems arising from the use of this product, regardless of the information herein.

Regarding Trademarks

KPDL is a trademark of Kyocera Corporation. Microsoft®, Windows®, Windows 7®, Windows Vista®, Windows XP®, Windows Server®, Word®, and Powerpoint® are registered trademarks of Microsoft Corporation in the U.S. and/or other countries. PCL® is a trademark of Hewlett-Packard Company. TrueType® and Mac OS® are registered trademark of Apple Inc. Adobe®, Acrobat®, Adobe Reader®, Photoshop® and PostScript® are trademarks of Adobe Systems, Incorporated. UNIX® is a trademark in the United States and other countries, licensed exclusively through X/Open Company Limited.

All other brand and product names herein are registered trademarks or trademarks of their respective companies.

Examples of the operations given in this guide support the Windows 7 printing environment. Essentially the same operations are used for Microsoft Windows Vista, Windows XP, Windows Server 2003, and Windows Server 2008 environments.

User Interface screen captures shown in this guide may differ depending on your printing system.

This user guide and its contents were developed for the 5.3 driver.

Models supported by the KX printer driver

FS-2100D

FS-2100DN

FS-4100DN

FS-4200DN

FS-4300DN

Table of Contents

Chapter 1 Installation

Preparing to Install the Driver	1-1
Selecting an Installation Method	1-2
Installing Utilities	1-2
Upgrading Driver Components	1-2
European Default Duplex	1-2
Express Installation	1-3
Installing in Express Mode	1-3
Custom Installation	1-4
Installing in Custom Mode with a Network Connection using Discover	1-4
Installing in Custom Mode with a USB Connection using Discover	1-6
Installing in Custom Mode with a Network Connection using Custom Select	1-7
Installing in Custom Mode with a USB Connection using Custom Select	1-8
Installing in Custom Mode with a Parallel Connection	1-10
Optional Printer Components	1-11
Installing Optional Printer Components	1-11
The Add Printer Wizard	1-11
Installing a Printer Driver in Windows 7 and Windows Vista	1-11
Installing a Printer Driver in Windows XP	1-12
Printer Driver Settings Access	1-12
Changing the Default Driver Settings	1-12

Chapter 2 Device Settings

Accessing Device Settings	2-1
Device Options	2-1
Setting Device Options	2-1
Setting up Custom Boxes	2-1
Auto Configure	2-2
Enabling Auto Configuration	2-3
Memory	2-3
Setting the Memory	2-3
RAM Disk	2-3
Setting RAM Disk	2-4
Administrator Settings	2-4
General	2-4
Show Quick Print Tab	2-4
Send Count Information	2-5
Send Application Name	2-5
Associate Profile with Application	2-5
Password Protect Administrator Settings	2-5
SNMP	2-6
Lock Settings	2-7
Lock Settings Options	2-7
User Login	2-8
User Login Options	2-8
Printing with User Login	2-9

Job Accounting	2-10
Job Accounting Options	2-10
Printing with Job Accounting	2-11
Policy Manager	2-11
Selecting Policy Manager Options	2-12
Printing with Policy Manager	2-12
User Settings	2-13
Identification	2-13
Units	2-14
Language Preference	2-14
PDL (Page Description Language)	2-14
PDL Options	2-15
PDF Options	2-16
XPS Driver	2-18
Compatibility Settings	2-18
Media Source Enumeration	2-18
Ignore Application Collation	2-19
Combine Source and Media Type Lists	2-19
Removing a Plug-in	2-20

Chapter 3 Quick Print

Quick Print Options	3-1
Common Printing Options	3-1
Collate	3-2
Duplex Printing	3-2
Multiple Pages per Sheet	3-3
Edit Quick Print	3-3
Profiles	3-4
Selecting a Profile	3-4
Saving a Profile	3-4
Editing a Profile	3-5
Importing a Profile	3-5
Exporting a Profile	3-5
Application Based Printing	3-6

Chapter 4 Basic

Basic Settings	4-1
Source and Media Types	4-2
Print Size and Page Size	4-2
Creating a Custom Page Size	4-3
Printing with Custom Size Pages	4-3
Duplex Printing	4-3
Printing in Duplex Mode	4-4
Collate	4-4
Printing Collated Documents	4-5
Quality	4-5
Print Preview	4-5
Previewing a Print Job	4-5
Kyocera Logo	4-6
Displaying Version Information	4-6
Displaying Plug-in Information	4-6

Chapter 5 Layout

Multiple Pages per Sheet	5-1
Printing Multiple Pages per Sheet	5-1

Scaling	5-2
Setting Scaling on the Page	5-2
Gutter	5-2
Creating a Gutter	5-2
Booklet	5-3
Printing a Booklet	5-3
Poster	5-3
Printing a Poster	5-4

Chapter 6 Imaging

Print Quality and Custom Quality	6-1
Selecting Print Quality	6-1
Selecting EcoPrint	6-2
Half Speed Mode	6-2
Fonts	6-2
Font Settings	6-3
Selecting Font Settings	6-3
Font Substitution	6-3
Disable Device Fonts	6-4
Graphics	6-4
Selecting Graphics Settings	6-4
Pattern Scaling	6-4
Line Thinning	6-5
Inversion Options	6-5
Optimization	6-6
CIE Option	6-6
Halftone Screen	6-6
Adjusting Grayscale	6-7
Text and Graphics Effects	6-8

Chapter 7 Publishing

Cover Mode	7-1
Printing Covers	7-1
Cover Mode Options	7-2
Choosing Cover Media	7-5
Page Insert	7-5
Printing Page Inserts	7-5
Page Insertion Options	7-6
Transparency Interleaving	7-7
Inserting Backing Sheets Between Transparencies	7-7

Chapter 8 Job

Job Storage (e-MPS)	8-1
Job Storage (e-MPS) options	8-1
Custom Box	8-2
Storing a Job in a Custom Box	8-2
Quick Copy	8-3
Printing a Quick Copy Job	8-3
Proof and Hold	8-3
Printing a Proof and Hold Job	8-4
Private Print	8-4
Storing a Private Print Job	8-4
Job Storage	8-5
Storing a Job Storage Job	8-5
Job Name	8-6

Don't Use Application Name	8-6
Overwrite Job Name	8-6
Selecting a Job Name	8-6

Chapter 9 Advanced

Prologue/Epilogue	9-1
Selecting a Prologue/Epilogue File	9-1
Editing a Prologue/Epilogue File	9-2
Deleting a Prologue/Epilogue File	9-2
Assigning a Prologue/Epilogue File	9-2
Unassigning a Prologue/Epilogue File	9-2
Specifying the Insertion Point	9-2
Watermark	9-3
Adding or Editing a Watermark	9-3
Selecting Pages for Watermark	9-5
Security Watermark	9-5
Adding or Editing a Security Watermark	9-6
Adjusting Security Watermark Calibration	9-7
Selecting Pages for Security Watermark	9-8
Status Monitor	9-8
Selecting Status Monitor Options	9-8
Setting Status Monitor Preferences	9-9
EMF Spooling	9-10
Selecting EMF Spooling	9-10
Enable Client Profile	9-10

Glossary	i
----------------	---

1 Installation

A printer driver is an application that manages communication between a printer and your computer. Once installed, the printer driver settings must be configured in the printer **Properties** and **Printing Preferences**.

Note: In Windows operating systems, you must be logged in with administrator rights to install the printer driver.

Preparing to Install the Driver

This section describes the initial steps to take before you install the printer driver, and based on your operating system, the next procedure you can follow.

In Windows 7 and Windows Vista with a USB connection, a driver installation will be made from the Microsoft Windows Update site if a certified driver is available and the system is connected to the web. We recommend you continue to install the driver from the supplied installation disc for an expanded feature set. In Windows, if the **Found New Hardware Wizard** dialog box appears during the installation process, click **Cancel**.

In Windows XP, or Windows Server 2003, if the **Hardware Installation** warning dialog box appears, click **Continue Anyway**. In Windows 7, Windows Vista, or Windows Server 2008, if a warning dialog box appears stating **Windows can't verify the publisher of this driver software**, click **Install this driver software anyway**.

- 1 Turn on the computer and the printer.
- 2 Insert the **Product Library** disc into the disc drive. The main menu appears.

Note: If the **Product Library** fails to start after inserting it into the disc drive, use Windows Explorer to locate **Setup.exe** on the local drive and double-click to open.

- 3 Click **View License Agreement** to read the license agreement.
- 4 Click **Accept** to proceed.
- 5 To begin the installation, click **Install Software**.

Note: If the **Windows Security** warning dialog box appears at any point during the installation process, click **Install this driver software anyway**.

- 6 The **Installer** appears with several installation methods displayed.

Selecting an Installation Method

You can select **Express Mode** for a network or USB connection and the installation wizard will discover your printers. You can also select **Custom Mode** for a network, USB, or parallel connection and either manually select installation packages and specify utilities or let the installation wizard discover your printer.

Express Mode Installation

[Installing in Express Mode](#) on page 1-3

Custom Mode Installation

[Installing in Custom Mode with a Network Connection using Discover](#) on page 1-4

[Installing in Custom Mode with a USB Connection using Discover](#) on page 1-6

[Installing in Custom Mode with a Network Connection using Custom Select](#) on page 1-7

[Installing in Custom Mode with a USB Connection using Custom Select](#) on page 1-8

[Installing in Custom Mode with a Parallel Connection](#) on page 1-10

Installing Utilities

On the **Installation Method** page, click **Utilities** to install printer utilities. You can also select utilities to install during the **Custom Installation** procedure.

Upgrading Driver Components

If the installation wizard detects older driver or utility components, the **Software Component Upgrade** page appears.

- 1 Choose the component to upgrade. Click **Next**.
- 2 Confirm your upgrade settings. To start the upgrade, click **Upgrade**.
- 3 When the upgrade completes, click **Next**. The **Installation Method** page appears.

European Default Duplex

Printing on both sides of a sheet of paper (duplex mode) reduces paper consumption and helps conserve environmental resources. Duplex mode also lowers costs by reducing the amount of paper that must be purchased. We recommend that printing systems capable of duplex printing use duplex mode by default. This can be set in the printer driver installation process for European locations only.

After you click **Express mode** or **Custom mode** in the **Installer**, if the operating system locale is **EU** and time zone is **GMT 0**, **GMT +1** or **GMT +2**, a message about resource and energy conservation appears. Read the message, and then click **OK**.

After installation is successful, an **Enable Duplex** check box is displayed on the **Installation Completed** page. Select the check box to have the driver

automatically default to duplex mode. Exceptions to the default can afterward be made by selecting options in the driver **Quick Print** or **Basic** tabs.

Express Installation

Express Mode applies to driver installation for a USB or network connection only. The installation wizard discovers printers that are turned on, and connected by USB or network cable. In **Custom Mode**, you are able to select the installation packages and specify the port.

Installing in Express Mode

This section describes the express installation procedure of the driver software in Windows operating systems.

- 1 Ensure that your printer and computer are turned on and connected by USB or network cable.

Note: In Windows 7 and Windows Vista with a USB connection, a driver installation will be made from the Microsoft Windows Update site if a certified driver is available and the system is connected to the web. We recommend you continue with the steps to install the KX Driver for an expanded feature set. In Windows, if the **Found New Hardware Wizard** dialog box appears during the installation process, click **Cancel**.

Note: In Windows XP, or Windows Server 2003, if the **Hardware Installation** warning dialog box appears, click **Continue Anyway**. In Windows 7, Windows Vista, or Windows Server 2008, if a warning dialog box appears stating **Windows can't verify the publisher of this driver software**, click **Install this driver software anyway**.

- 2 On the **Installation Method** page, click **Express Mode**.
- 3 The **Discover Printing System** page opens, searching for your printing system.

If Discover finds your printing system, select your model from the list and click **Next**.

If Discover does not find your printing system, a message appears. Remove and reinsert the USB or network cable, and ensure it is connected properly. Click **Refresh** to retry the discovery. If the system still cannot find your printing system, contact your system administrator.

Select **Use host name for port name** to use a host name for the Standard TCP/IP port. If the installation wizard still displays the IP address, contact your system administrator. *(Not available with a USB connection.)*

Click **Information** if you want to open a dialog box with details about IP Address, Host Name, Printer Model, Contact, Location, and Serial Number. Click **OK**. Click **Next**. *(Not available with a USB connection.)*
- 4 On the **Printer Settings** page, you can assign a name to your printing system.

Note: With a first time USB connection, the **Printer Settings** page does not appear.

You can also choose to share this printer with others or set this printer as the default printer. Make your selections, and then click **Next**.

- 5 On the **Confirm Settings** page, click **Install** if the settings are correct. Click **Back** to correct the settings.
- 6 The **Installation Completed** page appears displaying the following driver options.
 - Print a test page**

This selection verifies a connection with the printer and creates a print out of the installed driver components.
 - Enable Status Monitor**

The **Status Monitor** displays system status messages on your computer screen during printing tasks. The **Status Monitor** button appears on the **Advanced** tab.
 - Show Quick Print Tab**

This selection lets you define basic print options into group profiles that can be accessed easily. The **Show Quick Print tab** option also appears in the **Administrator Settings** in **Device Settings**.
 - Device Settings**

Select the **Device Settings** check box to open **Device Settings** where you can choose installed options for your printing system. (The **Device Settings** check box appears only in Windows XP with a network connection.)

When the installation completes successfully, click **Finish** to exit the installation wizard.

A message may appear if there is a software installation failure.

Click **Finish**, and retry the installation. If the same message appears again, contact your system administrator.

The installation of the printer is now complete. If prompted, restart your computer.

Custom Installation

Custom Mode applies to driver installation for a USB, parallel, or network connection. The installation wizard can discover printers that are turned on, and connected by USB, parallel, or network cable, or you can manually select the driver from drivers that are available. You can specify the printer port, fonts, and the utilities you want to install.

Printer drivers that ship with Windows operating systems are called minidrivers. The minidriver is available separately for PCL and KPDL and provides basic support for your printer.

The KX XPS driver is only available for printing systems used with Windows 7, Windows Vista, or Windows Server 2008. The XPS driver is discussed in the *Device Settings* chapter. Minidriver functionality is not documented in this user guide.

Installing in Custom Mode with a Network Connection using Discover

This section describes the custom installation procedure of the driver software in Windows operating systems using a network connection.

- 1 Ensure that your printer and computer are connected to a network.

- 2 On the **Installation Method** page, select **Custom Mode**.
- 3 The **Discover Printing System** page opens searching for your printing system. The **Discover** button is automatically selected. A list of models appears. Click **Next**.

If Discover does not find your printing system, a message appears. Remove and reinsert the network cable, and ensure it is connected properly. Click **Refresh** to retry the discovery. If the system still cannot find your printing system, contact your system administrator.
- 4 On the **Custom Installation** page, select the driver and software packages you want to install from the **Driver** and **Utility** tabs, and clear those not intended for installation. Click **Next**.

If you only select software packages from the **Utility** tab, you will skip to the **Confirm Settings** page.
- 5 On the **Printer Settings** page, you can assign a name for your printing system. You can also choose to share this printer with others or set this printer as the default printer. Make your selections, and then click **Next**.
- 6 On the **Confirm Settings** page, click **Install** if the settings are correct. Click **Back** to correct the settings.

Note: In Windows XP, or Windows Server 2003, if the **Hardware Installation** warning dialog box appears, click **Continue Anyway**. In Windows 7, Windows Vista, or Windows Server 2008, if a warning dialog box appears stating **Windows can't verify the publisher of this driver software**, click **Install this driver software anyway**.

- 7 The **Installation Completed** page appears displaying the following driver options.
 - Print a test page**

This selection verifies a connection with the printer and creates a print out of the installed driver components.
 - Enable Status Monitor**

The **Status Monitor** displays system status messages on your computer screen during printing tasks. The **Status Monitor** button appears on the **Advanced** tab.
 - Show Quick Print Tab**

This selection lets you define basic print options into group profiles that can be accessed easily. The **Show Quick Print tab** option also appears in the **Administrator Settings** in **Device Settings**.
 - Device Settings**

Select the **Device Settings** check box to open **Device Settings** where you can choose installed options for your printing system. (The **Device Settings** check box appears only in Windows XP.)

When the installation completes successfully, click **Finish** to exit the installation wizard.

A message may appear if there is a software installation failure.

Click **Finish**, and retry the installation. If the same message appears again, contact your system administrator.

The installation of the printer is now complete. If prompted, restart your computer.

Installing in Custom Mode with a USB Connection using Discover

This section describes the custom installation procedure of the driver software in Windows operating systems using a USB connection. With **Discover**, all devices available for the driver installation are found automatically. This is the recommended Custom Mode USB installation method.

- 1 Ensure that your printer and computer are turned on and connected using a USB cable.

Note: In Windows 7 and Windows Vista, a driver installation will be made from the Microsoft Windows Update site if a certified driver is available and the system is connected to the web. We recommend you continue with the steps to install the KX Driver for an expanded feature set.

- 2 On the **Installation Method** page, select **Custom Mode**.

- 3 The **Discover Printing System** page opens, searching for your printing system. The **Discover** button is automatically selected.

Select your device and click **Next**.

If Discover does not find your printing system, a message appears. Remove and reinsert the USB cable, and ensure it is connected properly. Click **Refresh** to retry the discovery. If the system still cannot find your printing system, contact your system administrator.

- 4 On the **Custom Installation** page, select the driver and software packages you want to install from the **Driver** and **Utility** tabs, and clear those not intended for installation. Click **Next**.

If you only select software packages from the **Utility** tab, you will skip to the **Confirm Settings** page.

- 5 On the **Printer Settings** page, you can assign a name to your printing system.

Note: With a first time USB connection, the **Printer Settings** page does not appear.

You can also choose to share this printer with others or set this printer as the default printer. Make your selections, and then click **Next**.

- 6 On the **Confirm Settings** page, click **Install** if the settings are correct. Click **Back** to correct the settings.

Note: In Windows XP, or Windows Server 2003, if the **Hardware Installation** warning dialog box appears, click **Continue Anyway**. In Windows 7, Windows Vista, or Windows Server 2008, if a warning dialog box appears stating **Windows can't verify the publisher of this driver software**, click **Install this driver software anyway**.

- 7 The **Installation Completed** page appears displaying the following driver options.

Print a test page

This selection verifies a connection with the printer and creates a print out of the installed driver components.

Enable Status Monitor

The **Status Monitor** displays system status messages on your computer screen during printing tasks. The **Status Monitor** button appears on the **Advanced** tab.

Show Quick Print Tab

This selection lets you define basic print options into group profiles that can be accessed easily. The **Show Quick Print tab** option also appears in the **Administrator Settings** in **Device Settings**.

When the installation completes successfully, click **Finish** to exit the installation wizard.

A message may appear if there is a software installation failure.

Click **Finish**, and retry the installation. If the same message appears again, contact your system administrator.

The installation of the printer is now complete. If prompted, restart your computer.

Installing in Custom Mode with a Network Connection using Custom Select

This section describes the custom installation procedure of the driver software in Windows operating systems using a network connection.

- 1 Ensure that your printer and computer are connected to a network.
- 2 On the **Installation Method** page, select **Custom Mode**.
- 3 The **Discover Printing System** page opens, searching for your printing system. The **Discover** button is automatically selected. Choose **Custom select** and click **Next**.
- 4 The **Printing System** page appears. Select your printing system model from the list and click **Next**. If there is only one driver model, this page does not appear. Proceed to the next step.
- 5 On the **Printer Port** page, select the port connected to your printing system, or add a port connected to your system by clicking **Add Port**. Click **Next**.
- 6 On the **Custom Installation** page, select the driver and software packages you want to install from the **Driver** and **Utility** tabs, and clear those not intended for installation. Click **Next**.
If you only select software packages from the **Utility** tab, you will skip to the **Confirm Settings** page.

- 7 On the **Printer Settings** page, you can assign a name for your printing system. You can also choose to share this printer with others or set this printer as the default printer. Make your selections, and then click **Next**.
- 8 On the **Confirm Settings** page, click **Install** if the settings are correct. Click **Back** to correct the settings.

Note: In Windows XP, or Windows Server 2003, if the **Hardware Installation** warning dialog box appears, click **Continue Anyway**. In Windows 7, Windows Vista, or Windows Server 2008, if a warning dialog box appears stating **Windows can't verify the publisher of this driver software**, click **Install this driver software anyway**.

- 9 The **Installation Completed** page appears displaying the following driver options.

Print a test page

This selection verifies a connection with the printer and creates a print out of the installed driver components.

Enable Status Monitor

The **Status Monitor** displays system status messages on your computer screen during printing tasks. The **Status Monitor** button appears on the **Advanced** tab.

Show Quick Print Tab

This selection lets you define basic print options into group profiles that can be accessed easily. The **Show Quick Print tab** option also appears in the **Administrator Settings** in **Device Settings**.

Device Settings

Select the **Device Settings** check box to open **Device Settings** where you can choose installed options for your printing system. (The **Device Settings** check box appears only in Windows XP.)

When the installation completes successfully, click **Finish** to exit the installation wizard.

A message may appear if there is a software installation failure.

Click **Finish**, and retry the installation. If the same message appears again, contact your system administrator.

The installation of the printer is now complete. If prompted, restart your computer.

Installing in Custom Mode with a USB Connection using Custom Select

This section describes the custom installation procedure of the driver software in Windows operating systems using a USB connection. With the **Custom select** option, you manually select the printing system and printer port to install.

In **Custom mode**, **Custom Select** is not recommended for USB in environments where printing systems are connected and reconnected using USB ports. The **Discover** method provides a more reliable installation path.

- 1 Ensure that your printer and computer are turned on and connected using a USB cable.

Note: In Windows 7 and Windows Vista, a driver installation will be made from the Microsoft Windows Update site if a certified driver is available and the system is connected to the web. We recommend the **Custom Mode** using **Discover** for USB connections to ensure a reliable installation.

- 2 On the **Installation Method** page, select **Custom Mode**.
- 3 The **Discover Printing System** page opens, searching for your printing system. The **Discover** button is automatically selected. Choose **Custom select** and click **Next**.
- 4 The **Printing System** page appears. Select your printing system model from the list and click **Next**.
- 5 On the **Printer Port** page, select an existing port connected to your printing system. Click **Next**.
- 6 On the **Custom Installation** page, select the driver and software packages you want to install from the **Driver** and **Utility** tabs, and clear those not intended for installation. Click **Next**.

If you only select software packages from the **Utility** tab, you will skip to the **Confirm Settings** page.
- 7 On the **Printer Settings** page, you can assign a name to your printing system. You can also choose to share this printer with others or set this printer as the default printer. Make your selections, and then click **Next**.
- 8 On the **Confirm Settings** page, click **Install** if the settings are correct. Click **Back** to correct the settings.

Note: In Windows XP, or Windows Server 2003, if the **Hardware Installation** warning dialog box appears, click **Continue Anyway**. In Windows 7, Windows Vista, or Windows Server 2008, if a warning dialog box appears stating **Windows can't verify the publisher of this driver software**, click **Install this driver software anyway**.

- 9 The **Installation Completed** page appears displaying the following driver options.
 - Print a test page**

This selection verifies a connection with the printer and creates a print out of the installed driver components.
 - Enable Status Monitor**

The **Status Monitor** displays system status messages on your computer screen during printing tasks. The **Status Monitor** button appears on the **Advanced** tab.
 - Show Quick Print Tab**

This selection lets you define basic print options into group profiles that can be accessed easily. The **Show Quick Print tab** option also appears in the **Administrator Settings** in **Device Settings**.

When the installation completes successfully, click **Finish** to exit the installation wizard.

A message may appear if there is a software installation failure.

Click **Finish**, and retry the installation. If the same message appears again, contact your system administrator.

The installation of the printer is now complete. If prompted, restart your computer.

Installing in Custom Mode with a Parallel Connection

This section describes the custom installation procedure of the driver software in Windows operating systems using a parallel connection.

- 1** Ensure that your printer and computer are turned on and connected using a parallel cable.
- 2** On the **Installation Method** page, select **Custom Mode**.
- 3** On the **Discover Printing System** page, select the **Custom select** option, and click **Next**.
- 4** On the **Printing System** page, select a model. Click **Next**.
- 5** On the **Printer Port** page, select the local port connected to your printing system. Click **Next**.
- 6** On the **Custom Installation** page, select the driver and software packages you want to install from the **Driver** and **Utility** tabs, and clear those not intended for installation. Click **Next**.
- 7** On the **Printer Settings** page, you can assign a name for the printing system. This name appears in Windows **Devices and Printers** and in the printer lists in applications. You can also choose to share this printer with others or set this printer as the default printer. Make your selections, and then click **Next**.
- 8** On the **Confirm Settings** page, click **Install** if the settings are correct. Click **Back** to correct the settings.

Note: In Windows XP, or Windows Server 2003, if the **Hardware Installation** warning dialog box appears, click **Continue Anyway**. In Windows 7, Windows Vista, or Windows Server 2008, if a warning dialog box appears stating **Windows can't verify the publisher of this driver software**, click **Install this driver software anyway**.

- 9** The **Installation Completed** page appears displaying the following driver options.

Print a test page

This selection verifies a connection with the printer and creates a print out of the installed driver components.

Show Quick Print Tab

This selection lets you define basic print options into group profiles that can be accessed easily. The **Show Quick Print tab** option also appears in the **Administrator Settings** in **Device Settings**.

When the installation completes successfully, click **Finish** to exit the installation wizard.

A message may appear if there is a software installation failure.

Click **Finish**, and retry the installation. If the same message appears again, contact your system administrator.

The installation of the printer is now complete. If prompted, restart your computer.

Optional Printer Components

You can expand the functionality of your printer driver by installing optional components.

Installing Optional Printer Components

- 1** On the **Product Library** disc menu > **Advanced Tools** menu, select **Optional Printer Components**.
- 2** Select a printer to install optional components, and click **Next**.
- 3** On all **Select** pages, choose your components, and click **Next**.
- 4** On the **Confirm Settings** page, click **Install** if the displayed settings are correct. Click **Back** to correct any settings.
- 5** The **Printer Components Installation Completed** page appears. Click **Finish**.
When you have completed installing printers and optional components, restart your computer if prompted.

The Add Printer Wizard

The **Add Printer Wizard** displays a series of pages that guide you through printer installation. You are prompted to make installation choices on each page.

Installing a Printer Driver in Windows 7 and Windows Vista

This section describes how to install a printer driver using the **Add Printer Wizard** in Windows 7 and Windows Vista.

- 1** Click **Start** and click **Devices and Printers** (Windows 7), or click **Control Panel** and double-click **Printers** (Windows Vista).
- 2** Click **Add a printer**.

- 3 The **Add Printer Wizard** appears. Click either **Add a local printer** or **Add a network, wireless or Bluetooth printer**. Follow the instructions on each page, and then click **Next** to proceed to the next page.

Note: If a warning dialog box appears stating **Windows can't verify the publisher of this driver software**, click **Install this driver software anyway**.

- 4 The last page of the wizard appears with a message that you've successfully added the printer you selected. Installation of the printer driver is now complete. Click **Print a test page** if you want to produce sample print output from the newly installed printer. To close the **Add Printer Wizard**, click **Finish**.

Installing a Printer Driver in Windows XP

This section describes how to install a printer driver using the **Add Printer Wizard** in Windows XP.

- 1 Click **Start** and **Printers and Faxes**.
- 2 Click **Add a printer**.
- 3 The **Add Printer Wizard** appears. Follow the instructions on each page, and then click **Next** to proceed to the next page.

Note: If the **Found New Hardware Wizard** page appears, click **Cancel**. If the **Hardware Installation** warning dialog box appears, click **Continue Anyway**.

- 4 When the **Completing the Add Printer Wizard** page appears, installation of the printer driver is now complete. To close the **Add Printer Wizard**, click **Finish**. If prompted, restart your computer.

Printer Driver Settings Access

The printer driver software can be accessed from the **Print** dialog box of an application, or from **Start**. If accessed from an application, then changes made to driver settings remain in effect until the application ends. If accessed from **Start**, changes are maintained as the default printer settings.

Changing the Default Driver Settings

Default driver settings apply to print jobs initiated from any application, but they are overwritten by setting changes made within each application.

- 1 Click **Start** and click **Devices and Printers** (Windows 7), or click **Control Panel** and double-click **Printers** (Windows Vista and Windows Server 2008), or **Printers and Faxes** (Windows XP and Windows Server 2003).
- 2 Right-click on your printing system icon.
- 3 Click **Printing Preferences**.
- 4 In the **Printing Preferences** dialog box, select the desired features in all tabs.

- 5 Click **OK** to save the settings.

2 Device Settings

In **Device Settings**, you can select installed printing system options so the associated features can be used with the printer driver. You can also match the memory setting in the driver with the memory installed in your printing system, which lets the driver manage font downloads more efficiently. Administrator, User, PDL (Page Description Language), and Compatibility settings can also be selected.

Accessing Device Settings

You can open **Device Settings** from any of the most commonly used Windows operating systems.

- 1 Click **Start** and click **Devices and Printers** (Windows 7), or click **Control Panel** and double-click **Printers** (Windows Vista and Windows Server 2008), or **Printers and Faxes** (Windows XP and Windows Server 2003).
- 2 Right-click the desired printing system model.
- 3 Click **Printer properties** (Windows 7) or **Properties** (Windows Vista, Windows Server 2008, Windows XP and Windows Server 2003).
- 4 Click **Device Settings**.

Device Options

Optional devices extend the capabilities of your printing system for source, finishing, and job storage.

In a client/server environment, this feature is unavailable to a client logged in as a restricted user.

Setting Device Options

You can set the printer driver to match the optional devices installed on your printing system.

- 1 In **Device Settings > Device options**, select the check boxes for all installed devices.
- 2 Click **OK** in the **Properties** dialog box.

Setting up Custom Boxes

You can create up to 1000 custom boxes for storing print jobs. Custom boxes can be assigned to users who can print the jobs later from the printing system's operation panel.

- 1 In **Device Settings**, select **SSD**. Or if selected, double-click **SSD**.
- 2 In the **SSD Settings** dialog box, click **Add**.
- 3 In the **Defined custom boxes** list, a new **Box number** and **Box name** appear. If desired, change the number and name in the **Box number** and **Box name** boxes. The number must be within a range of 1 to 1000, and the name length can be up to 32 characters. You can also type a user name up to 20 characters.
- 4 Select **Shared box** to enable the box for multiple users.
Check box selected: All network users can save jobs in the box.
Check box cleared: Only the box owner and network administrator can save jobs in the box.
- 5 To require users of a shared box to type a password before printing, select **Require password**, and type a password up to 16 characters.
- 6 Click **OK** in the **SSD Settings** and **Properties** dialog boxes.
The new custom box appears in the **Custom Box** dialog box when printing.

You can remove a custom box by selecting it in the **Defined custom boxes** list and clicking **Delete**.

You can import a custom box list by clicking **Import** and browsing for a valid custom box list file (.CSV or .KXU).

You can save the current custom box list (.CSV or .KXU) in your computer or network by clicking **Export**. A saved list can be imported into another printer driver.

Auto Configure

Auto Configure detects the devices installed on the printing system if it is connected over a network. **Auto Configure** can detect printing system devices such as input devices. When your computer is connected to the printing system through a TCP/IP or WSD port, the **Auto Configure** button appears in **Device Settings**. **Auto Configure** updates the **Device options** list, **Memory**, and preview images to keep the printer driver consistent with the printing system configuration.

Not all installed devices are detected by using **Auto Configure**. Before selecting **OK** in **Device Settings**, check the settings to make sure that they are correct.

Note: The default setting for Windows XP Service Pack 2 is for the Windows Firewall to be set to **On**. The setting can be changed to allow communication between the printing system and your computer. In the Windows **Security Alert** dialog box, click **Unblock**.

Silent Auto Configuration

Silent auto configuration checks the printing system every 10 minutes for changes in optional devices or memory. When a change is detected, the driver is automatically updated with the new settings. **Silent auto configuration** is only available for printing systems installed in Windows 7, Windows Vista, or Windows Server 2008.

In a client/server environment, this feature is unavailable to a client logged in as a restricted user.

Enabling Auto Configuration

The **Auto Configure** button can be used to detect all available device options when the printing system is connected to a network through a TCP/IP port.

- 1 Verify that all optional devices are attached to the printing system, and that it is turned on and ready to print.
- 2 In **Device Settings**, click **Auto Configure**.

In Windows XP, the driver settings are updated immediately.

In Windows 7, Windows Vista, and Windows Server 2008, the **Auto Configure** dialog box opens. Select from Auto configure options:

Auto Configure Now

Click the button at any time to retrieve the current settings from the printing system. It is recommended to do this when the driver is first installed and when **Silent auto configuration** is turned off.

Silent auto configuration

Select to let the driver check the printing system every 10 minutes for any changes in optional devices or memory. When a change is detected, the driver is automatically updated with the new settings.

Memory

Memory is the amount of standard and optional memory installed in the printing system. To maximize the downloading of printing system fonts, the driver must be set to match the total printing system memory. Selections vary according to printing system model.

Setting the Memory

By default, the **Memory** setting matches the standard memory in the printing system. If optional memory is installed, set the memory in the printer driver to match the total amount of memory.

- 1 Install optional DIMM memory in the printing system.
- 2 In **Device Settings > Memory**, type or select the amount of total installed memory by clicking the up and down arrows until the text box shows the correct number of megabytes (MB).

If your printing system includes the **Auto Configure** feature, you can use it to obtain information about the memory size.

RAM Disk

The RAM disk functions as virtual storage, saving print requests into the printing system's memory. Because the RAM disk is temporary memory, all data stored there is lost when the power is turned off.

In a client/server environment, this feature is unavailable to a client logged in as a restricted user.

Note: If an SSD is installed, the RAM disk feature is unavailable.

If selected, the **Ignore application collation** feature in the **Compatibility Settings** dialog box lets the driver control collation. RAM disk can then increase the print speed of collated multiple copies by sending the print job just once.

Setting RAM Disk

You can set the RAM disk to save print requests into the printing system's memory.

- 1 At the printing system's operation panel, turn on RAM disk and set its size.
- 2 In **Device Settings > Device options**, select **RAM disk**.
- 3 In the **RAM disk** text box, type or select the desired RAM disk size. Click the up and down arrows until the text box shows the correct number of megabytes (MB) available physically on the operation panel.

The maximum RAM disk size depends on the amount of installed memory.

Administrator Settings

Administrator Settings lets you set options that include controlling accessibility, displaying features in the interface and setting a password to control access to the **Administrator Settings** options. Selections vary according to printing system model.

In a client/server environment, this feature is unavailable to a client logged in as a restricted user.

General

An administrator can control the display of the **Quick Print** tab, and other miscellaneous settings, including password and SNMP settings.

Show Quick Print Tab

This option lets you control the display of the **Quick Print** tab. You can define basic print options into group profiles for improved accessibility.

With a cleared check box for **Show Quick Print tab**, the tab does not appear in the **Printing Preferences** dialog box.

To enable this feature, in **Device Settings > Administrator Settings > General**, select **Show Quick Print tab**.

With a selected check box for the **Show Quick Print tab**, the tab appears in the **Printing Preferences** dialog box. When you select the **Show Quick Print tab** check box, you can access additional check boxes:

Hide other tabs displays only the **Quick Print** tab to the user.

Set Quick Print tab as default opens to this tab when you access **Printing Preferences**.

Hide Edit Quick Print control prevents users from customizing the **Quick Print** tab.

Send Count Information

This option lets you embed count information in the print job, which can be used by some applications for accounting purposes. Count information includes the number of copies produced as well as duplex printing, multiple pages per sheet, color mode, color page count, and paper size values.

When **PDF** is selected in the **PDL settings** dialog box, only color page count information is sent with PDF.

To enable this feature, in **Device Settings > Administrator Settings > General**, select **Send Count information**.

Send Application Name

This option lets you send the application name with a print job, so that a different printing process is used for each application. Some third party print accounting programs use this information to calculate print totals based on application type.

This option is unavailable if **PDF** is selected in the **PDL Settings** dialog box.

To enable this feature, in **Device Settings > Administrator Settings > General**, select **Send Application name**.

Associate Profile with Application

This option lets you set all printing from each installed application to use the same driver settings as defined in a profile. Before using this feature:

A profile must be created in the **Profiles** dialog box, accessed from any **Printing Preferences** tab.

An association must be created between a profile and an application in the **Application Based Printing** dialog box, accessed from the **Profiles** dialog box.

To enable this feature, in **Device Settings > Administrator Settings > General**, select **Associate Profile with application**.

Password Protect Administrator Settings

You can set **Password protect administrator settings** in the **Administrator Settings** dialog box to prevent unauthorized changes in this dialog box. If selected, this setting prompts you to enter a password and confirm the password. This password protection blocks access to all **Administrator Settings** options.

Setting the Administrator Password

You can set a password to prevent unauthorized changes in the **Administrator Settings** dialog box.

- 1** In **Device Settings > Administrator > General**, select **Password protect administrator settings**.
- 2** In the **Password** dialog box, enter a password, using at least 4 and no more than 16 characters. Reenter the password in **Confirm password** and click **OK**.

Clearing the Administrator Password

You can remove the administrator password.

- 1** In **Device Settings**, click **Administrator**.

- 2 In the **Enter Password** text box, type the password and click **OK**.
- 3 In the **Administrator Settings** dialog box, clear the **Password protect administrator settings** check box and click **OK**.

SNMP

Simple Network Management Protocol (SNMP) is a set of rules that govern the management of network devices, such as printing systems. These settings determine the level of security when using the **Auto Configure** feature, and prevent unauthorized printing to the SNMPv3 printing system. SNMP settings must be set in the printer driver and in the printing system's **Command Center RX**.

The following options are available:

SNMPv1/v2c

This option ensures successful **Auto Configure** communication using **Read community name** and **Write community name**.

SNMPv3

This option ensures secure **Auto Configure** communication using a user name and password. Authentication and privacy options are available by selecting **Settings**.

Apply to other models

This option displays a list of installed printing systems to apply the selected settings.

SNMPv3 Options

You can select options for secure communication with the printing system.

Authentication

This option provides an algorithm to check that a transferred file has arrived intact. Message Digest 5 (**MD5**) and Secure Hash Algorithm 1 (**SHA1**) are hash algorithms used to authenticate packet data.

MD5

This option provides a cryptographic hash function with a 128 bit hash value. It adds security and protection against Gateway Load Balancing Protocol (GLBP)-spoofing software.

SHA1

This option produces a message digest that is 160 bits long. **SHA1** is the successor to **MD5**.

Privacy

This option uses encryption for secure communication. It is available after you select the **Authentication** option. You may select one **Privacy** option.

DES

This option uses the Data Encryption Standard for encryption. **DES** turns cleartext into ciphertext via an encryption algorithm. It encrypts and decrypts data using 8-byte blocks and a 56-bit key.

AES

This option uses the Advanced Encryption Standard for encryption. **AES** is a symmetric block cipher that can process data blocks of 128 bits, using cipher keys with lengths of 128, 192, and 256 bits. It is more secure than **DES**.

Selecting SNMP Settings

These settings in the driver must be set to match the settings in the printing system's **Command Center RX**.

- 1** In **Device Settings > Administrator > General**, click **SNMP Settings**.
- 2** Select **SNMPv1/v2c** or **SNMPv3**.
For **SNMPv1/v2c**, type the **Read community name** and **Write community name**, to a maximum of 32 characters, and click **OK**.
For **SNMPv3**, type a **User name** to a maximum of 32 characters, and a **Password** from 8 to 32 characters.
- 3** To set authentication and privacy options for **SNMPv3**, click **Settings**.
- 4** In the dialog box, select from the available options.
- 5** Click **OK**.
- 6** Optional: Under **Apply to other models**, you can select from the list of available models. You can also click **Select All** or **Clear All**. The **SNMP** settings are applied to all selected models.

Lock Settings

An administrator can specify settings at the tab or feature level in the driver, and then lock them. The settings are then applied to all print jobs, and changes are restricted. The settings are locked in **Device Settings > Administrator Settings > Lock Settings**. For example, a driver setting could be set for printing duplex documents. This would save paper, resulting in cost savings and ecological benefits.

Locking a setting will also lock the feature where it appears in other tabs. For example, selecting **Lock Multiple pages per sheet** will also select and lock that feature in the **Quick Print** and **Layout** tabs.

The administrator can also set a password that is required to temporarily unlock a feature.

In a client/server environment, this feature is unavailable to a client logged in as a restricted user.

Lock Settings Options

The **Lock Settings** tab displays driver settings that an administrator can lock. Once locked, user changes are restricted and the settings are applied to all print jobs. Once the settings are made, the **Password settings** option can be accessed. This lets an administrator control usage of paper and toner amounts:

EcoPrint

This option locks the **EcoPrint** setting.

Duplex

This option locks the current **Print on both sides** setting selected in the **Quick Print** or **Basic** tab.

Multiple pages per sheet

This option locks the current **Multiple pages per sheet** setting selected in the **Quick Print** or **Layout** tab. The **Pages per sheet** option is not locked. Clicking the icon in the Quick Print tab, or the selection in the Layout tab, switches between the two-page and four-page options. In the Layout tab, all options are available and not limited to two-page and four page.

Profile with application

This option locks a defined profile of driver settings by application.

Job tab

This option locks settings selected in the **Job** tab.

Security settings

This option locks the **Security Watermark** in the **Advanced** tab. **Security Watermark** is an optional plug-in.

Password settings

The password set by the administrator temporarily unlocks driver features. It prompts the user for a password. When the administrator sets the password, the **Unlock** button appears in the driver tabs or the **Application Based Printing** dialog box. To unlock a feature, click **Unlock** and type the password.

User Login

Note: Some models do not support **User login**.

User login provides job restriction by user, in contrast to the **Job accounting** feature, which assigns privileges by division or department. User IDs and passwords can be stored in the printer driver for use with multiple printing systems.

User login adds users with a **user name** and **password**. The user name can be in user principal name (UPN) format: username@domain.com. The UPN format supports multiple domains. The UPN format is not needed if the default domain registered in the device is used.

This feature limits printing privileges to specified users for secure printing and accounting. The number of pages printed by each user will be tracked by the printing system.

Users added in the printer driver must also be manually registered at the printing system's operation panel.

User Login Options

User login settings selected in the driver are applied to every print job sent from your computer.

Use specific name

This option can be used to specify a name and password to use the same **User login** for every print job. If this option is selected, the user does not have to type the name and password for each print job.

A client computer in a client/server environment can accept the default name and password set by the administrator or type another name and password. Clicking **Reset** restores the default values.

Prompt for name

This option prompts the user for a name and password. You can use a name that is not on the list, and the name is not added to the list. When sending a print job, type a name and password when prompted, then click **OK** to print.

Prompt for name and validate

This option prompts for a name and password. For the job to print, the name and password entered must be on the **Login user name** list. You can use the **Login user names** entered in the **Login user name** list of the driver. When sending a print job, type a name and password when prompted, then click **OK** to print. This option ensures that the job prints, only after verifying that the selected name is saved in the driver.

Validate user name (computer) or prompt for login user name

This option searches for the Windows **User name** in the driver's **Login user name** list. Validation is done every time the user prints a job. If the Windows **User name** exists in the **Login user name** list, the associated driver **Login user name** and password from the list are used for the print job. To release the print job, the user must enter the **Login user name** and password at the printing system operation panel.

If a match is not found, the driver checks for administrator or user permissions. With user permissions, the print job is canceled, and the user is prompted to contact an administrator to establish printing permissions. With administrator permissions, the driver prompts for the **Login user name** and password. Along with the Windows **User name**, these are then added to the list so succeeding print jobs do not require the user to enter a **Login user name** and password again.

Login User Name

Click to add, delete, edit, import, or export login user names and passwords. Once a **Login user name** list is created, the list can be exported as a group by saving it as a text file (.CSV, .KXC., and .TXT). To import a **Login user name** list, browse for an existing list and save it in your printer driver.

Printing with User Login

After login user names are assigned and user login mode is set to **On** at the printing system, you can choose **User login** to print in user login mode.

In a client/server environment, the client computer is automatically set to the **User login** selection made in the server.

1 In **Device Settings > Administrator Settings > User Login**, select **User Login**.

2 Select a **User Login** option:

Use specific name

Prompt for name

The remaining **User Login** options become available when you create a login user name list.

Note: If you select the **Use specific name** or **Prompt for name** option, proceed to step 5.

3 Under the **Login user name** list, click the buttons to add, delete, edit, import or export names in the list.

4 Select from the remaining **User Login** options:

Prompt for name and validate

Validate user name (computer) or prompt for login user name

- 5 Click **OK** in all dialog boxes.
- 6 Print the document from the application.
- 7 When the **Print Options** dialog box appears, type or select a name and password and click **OK**. Login is required for some options.

Job Accounting

Job accounting gives an administrator the ability to control usage of a printing system. With **Job accounting**, an administrator can assign account IDs (identification numbers) to users or departments, a specific account ID, or make account ID input mandatory for printing. After account IDs are created, you can view from the printing system operation panel the number of copies associated with a specific ID as well as limit the number of copies for individual IDs. Account IDs can be up to 8 digits.

Note: **Job accounting** must be set to **On** at the printing system. A maximum of 100 account ID user names and passwords can be registered at the printing system and 100 account IDs and passwords can be stored in the printer driver for use with multiple printing systems.

Job Accounting Options

Job accounting supports the following options:

Use specific account ID

Select this option to track the print jobs of a user or group with an account ID. It sends the account ID with each print job. An administrator can restrict a user or group from changing their account ID by using the **Password protect administrator settings** in the **Administrator Settings** dialog box.

A client computer in a client/server environment can accept the default account ID set by the administrator or type another account ID. Clicking **Reset** restores the default values.

Prompt for account ID

Select this option to track the print jobs of a user or group with an account ID as well as prompt for an account ID. At the time a print job is sent, the user is prompted to enter a Job accounting ID.

Prompt for account ID and validate

Select this option to prompt for an account ID that is saved in the driver. When sending a print job, type an account ID when prompted, and then click **OK** to print. The account ID is validated against the account ID list. If typed incorrectly, you are prompted to type it again.

Display account ID list

Select this option to display the account ID list at the time of printing. The print job can be assigned to a user or group. The account ID list is stored in the driver and more than one ID must be established for the list to appear.

Account IDs

Add, edit, or delete account IDs from the list stored in the driver. Account ID descriptions match the user or group with an account ID. After an account ID list is created, the list can be exported as a group by saving it as a text file (.CSV, .KXC, .TXT). To import an account ID list, browse for an existing list and open it.

Printing with Job Accounting

After account IDs are assigned and Job accounting is set to **On** at the printing system, the number of pages printed is added to the selected account ID total.

In a client/server environment, the client computer is automatically set to the **Job accounting** selection made in the server.

1 In **Device Settings > Administrator Settings > Job Accounting**, select **Job accounting**.

2 Select a **Job Accounting** option:

Use specific account ID

Prompt for account ID

The remaining **Job accounting** options become available when you create an account ID list.

Note: If you select the **Use specific account ID** or **Prompt for account ID** option, continue to step 5.

3 Under the **Account IDs** list, click the buttons to add, delete, edit, import, or export **Account IDs** in the list.

4 Select from the remaining **Job accounting** options:

Prompt for account ID and validate

Display account ID list

5 Click **OK** in all dialog boxes.

6 Print the document from the application.

7 For some options, when the **Print Options** dialog box appears, type or select an account ID, and click **OK**.

Policy Manager

Policy Manager is a server-based application that provides centralized user authentication, authorization, user access control, and secure pull printing features. The Policy Manager application must be installed separately. It is also necessary to make settings in the printer driver **Device Settings > Administrator > Policy Manager** to integrate with Policy Manager. This Policy Manager driver feature is installed as an optional component of the driver.

The XPS driver does not support Policy Manager. For more information about Policy Manager, please contact your printing system dealer.

An administrator can set the Policy Manager server and user information for users and groups to print according to defined policies.

When policies restrict printing features, Policy Manager reconfigures the printer driver so that the restricted printing features are unavailable to the user or group. The **Policy Manager** options let you choose how conflicts are handled between a policy and a driver selection.

Secure pull printing lets the user choose a printing system after the job is sent. To use the secure pull printing feature, the driver must be connected to the Policy Manager spooler server using the Policy Manager spooler port. Print jobs are held in the Policy Manager spooler server until the user is authenticated at the printing system.

For a restricted user in a client/server environment, the **Administrator** button in **Device Settings** becomes the **Identity** button. A user can select Policy Manager options in the **Identity Settings** dialog box.

Selecting Policy Manager Options

After Policy Manager is installed and the server is set up, you can use the printer driver's **Policy Manager** tab to set server and user information.

- 1 In **Device Settings > Administrator Settings > Policy Manager**, select **Policy Manager**.
- 2 Enter the server address and port number.
- 3 Select an authentication option:
 - Use Windows authentication**
Select to use Windows login information for Policy Manager authentication. The **Policy Manager Login** dialog box does not appear during printing unless Windows authentication fails. If selected, continue to step 5.
 - Use specific name**
Select to enter specific login information. When selected, continue to step 4.
- 4 Type the **Login user name** and **Password**. The Login user name can be in the user principal name (UPN) format to support multiple domains:
username@domain.com
If left blank, the Windows login user name is used.
- 5 You can select **No notification message for policy conflicts** if you do not want a message to appear when policy conflicts occur during printing. When selected, choose a printing result:
 - Continue printing**
Applies the policy and prints the job
 - Cancel printing**
Cancels the print job
- 6 A restricted user in a client/server environment can click **Reset** to change the Login user name to the server's Policy Manager user name.
- 7 Click **OK** in all dialog boxes.

Printing with Policy Manager

With **Policy Manager** set to on in the driver, you can send a private and secure print job.

- 1 Print the document from the application. You can click **Preferences** or **Properties** to open the **Properties** dialog box and view printing restrictions set by the policy.
- 2 If the **Policy Manager Login** dialog box appears, enter a Login user name and password. This dialog box is generated when an invalid or blank Policy Manager user name or password is set in the driver. The **Policy Manager Login** dialog box does not appear if **Use Windows authentication** is selected in **Administrator Settings > Policy Manager**, except when the Windows authentication fails.
- 3 You can click **Do not ask again** to use the most recently-saved Login user name and password for each print job. When selected, the **Policy Manager Login** dialog box does not appear again.
- 4 Click **Log in** to send the print job to the Policy Manager spooler server, where the Login user name and password are authenticated. Otherwise you can print directly to the printing system instead of using the Policy Manager spooler.
The print job appears in the **Spooler** folder in **Policy Manager** or in **Client Viewer**. Please refer to the *Policy Manager User Guide* for Policy Manager and Client Viewer details.
- 5 On the printing system's operation panel, enter the Login user name and password to print all jobs under the Login user name. You can print from any printing system managed by the Policy Manager server.

User Settings

User Settings lets you specify user and department names, select the default unit of measure, and change the driver display language.

In a client/server environment, this feature is unavailable to a client logged in as a restricted user.

Identification

Identification lets you identify your print job with a **User name** and **Department** information, to a maximum of 31 characters. They can appear in the **Operation panel message**, or the **User name** can be used to identify a print job stored on the SSD, RAM disk or SD card.

Setting User Identification

You can type **User name** and **Department** information.

- 1 In **Device Settings > User**, type your preferred name in the **User name** text box.
- 2 Type your department or group name in the **Department** text box.
You can type up to 31 characters in the **User name** and **Department** text boxes.
- 3 Click **OK** in the **User Settings** and **Properties** dialog box.

Units

You can set **Inches** or **Millimeters** as the unit of measurement. This is used for the following settings:

Custom page size setting in the **Page Sizes** dialog box in the **Basic** tab.

Spacing setting in the **Add Watermark** and **Edit Watermark** dialog boxes in the **Advanced** tab.

Poster settings in the **Layout** tab.

Gutter settings in the **Finishing** tab.

Selecting a Unit of Measurement

You can select a unit for displaying measurements in the user interface.

- 1 In **Device Settings > User Settings**, select **Inches** or **Millimeters**.
- 2 Click **OK** in the **User Settings** and **Properties** dialog boxes.

Language Preference

The **Language preference** option specifies the user interface language of **Device Settings** in **Properties** and all tabs of **Printing Preferences**.

Available languages vary depending on your locale and your computer settings.

Setting Language Preference

You can select a user interface language.

- 1 In **Device Settings > User Settings**, select the desired language from the **Select language** list.
- 2 Click **OK** in the **User Settings** and **Properties** dialog boxes.

PDL (Page Description Language)

A Page Description Language (PDL) specifies the contents and layout of a printed page. In **Device Settings**, you can choose from **PCL XL**, (Printer Command Language XL), **PCL 5e**, **KPDL** (an emulation of PostScript printing), or **PDF** (Portable Document Format). The printer default is **PCL XL**, which is suitable for most printing purposes.

When using the XPS driver in Windows 7, Windows Vista, or Windows Server 2008, **PCL XL** is the only PDL selection. After you select a **PDL**, the selection appears in the lower corner of the **Preview image**. Use the XPS driver to print from applications that support XPS.

In **GDI compatible mode**, vector graphics are rasterized for printing as bitmap images. Use the **GDI compatible mode** option to improve the output quality of the graphic created by the application.

Note: To add **PDF** to the list of PDL choices, you must install the **Output to PDF** plug-in.

In a client/server environment, this feature is unavailable to a client logged in as a restricted user.

PDL Options

The PDL options, available in the **PDL Settings** dialog box, are accessed in **Device Settings**.

PCL XL

The most recent version of HP PCL and PCL 6. This PDL includes PCL 5e features. PCL XL lacks backward compatibility with earlier PCL versions, though it is enhanced over PCL 5e in these areas:

- Reduced file size
- Better print speed
- Faster return to application

PCL 5e

- Fully compatible with earlier PCL versions
- Bidirectional communication support
- Wide selection of fonts for use with Microsoft Windows applications
- Complex graphics might not print as well

KPDL

KPDL is used when printing from applications that support PostScript 2 or 3.

- An emulation of PostScript printing
- Strong graphics reproduction
- Print speeds may be slower than PCL 5e
- Requires more printing system memory than PCL 5e
- Enables native TrueType font downloading
- Supports most Graphics settings options

PDF

Output to PDF is a plug-in feature that lets you print and save documents from multiple sources to Adobe PDF. This feature can be used as an alternative to existing commercial applications for creating PDF documents. Documents saved as PDF retain their original appearance, and can be viewed and printed with Adobe Reader on Windows, Mac OS, and UNIX platforms.

For a document using mixed paper sizes, all pages in the PDF use the size of the first page.

Note: With **PDF** selected in the **PDL Settings** dialog box, only a limited set of driver options are available.

PDL Settings

When you click the **Settings** button, the available options are:

PCL XL Settings or KPDL Settings

Enable smart duplex printing

This option automatically keeps a sheet of paper from being sent through the duplex unit if the sheet will only be printed on one side. The duplex unit will be bypassed for the following types of print jobs: a one page document, one page from a multi-page document, or a multi-page document that prints onto a single sheet. Selecting this option can reduce wear on the mechanical duplex unit, and result in comparatively faster printing times.

PCL XL Settings

Skip printing blank pages

This option prevents the printing system from outputting any page that contains no data, or that has, at most, one space character. Selecting this option can save paper, and result in comparatively faster printing times. This feature is for regular printing (not for booklet, duplex or multiple pages per sheet).

KPDL Settings

Allow data passthrough

This option reduces errors when printing complex jobs from applications that use PostScript formatting. When selected, **EMF spooling** is not available in the **Advanced** tab.

PDF Settings

Provides options for printing and saving documents to Adobe PDF format. See PDF topics for details.

Selecting a PDL

You can select a page description language from **PDL** options.

- 1 In **Device Settings > PDL > PDL Settings**, select the desired page description language from the **Select PDL** list.
- 2 You can select the **GDI compatible mode** option to improve the output quality of graphics created by your application.
- 3 Select **Settings** when the PDL is set to **PCL XL**, **KPDL** or **PDF**.
 - If you select **PCL XL**, you can select **Skip printing blank pages** and **Enable smart duplex printing**.
 - If you select **KPDL**, you can select **Allow data passthrough** and **Enable smart duplex printing**.
 - If you select **PDF**, you can select from the available PDF Settings.
- 4 Click **OK** in the **PDL Settings** and **Properties** dialog boxes.

PDF Options

You can select **PDF** options if you have installed the **Output to PDF** plug-in.

The **PDF Settings** dialog box contains the following options:

PDF Settings

Embed fonts

This option ensures that document fonts appear accurately in the **PDF** file on screen. This option ensures accurate reproduction but significantly increases the file size.

Compress data

This option enables flat compression for the generated **PDF** document. This option significantly reduces the file size. Additional compression options are available within Adobe Acrobat.

Security

This option applies encryption to the **PDF** document. Click **Settings** for additional **Security** settings. See the next section for details.

Print and save

This option lets you print and save a document as a PDF file. Click **Settings** for additional **Print and save** settings.

Security Settings

This option lets you select an encryption level and create passwords for the generated **PDF** file.

The following security options are available:

Encryption

Encryption provides password protection so that a document cannot be opened or altered by unauthorized users.

Arc4 40

This encryption option provides low level security for a PDF document. This option supports Adobe Acrobat and Adobe Reader 6.0, or later.

Arc4 128

This encryption option provides low level security for a PDF document. This option supports Adobe Acrobat and Adobe Reader 6.0, or later.

AES 128

This encryption option provides high level security for a PDF document. This option supports Adobe Acrobat and Adobe Reader 7.0, or later.

AES 256

This encryption option provides high level security for a PDF document. This option supports Adobe Acrobat and Adobe Reader 9.0, or later.

Passwords

Select passwords for changing security settings and for opening a document. Passwords are supported to a maximum of 16 characters in length.

Require password to change security settings

Type an **Owner password**. Within Adobe Acrobat, this password is required to change the document restrictions in the **Files > Properties > Security** section. When a document with this password is opened in Adobe Reader, it cannot be printed or edited, and document data cannot be copied.

Require password to open document

Type a **User password**. The user password must be entered at the time the PDF document is opened. This password must be different from the owner password.

Print and Save Settings

This option lets you print and save a document as a PDF file.

Save to file only

A PDF file is created and saved locally.

Save to file and print

A PDF file is created, saved locally, and sent to print.

After you select between these two options, you can choose the following option:

Automatically save to default file

A PDF file can be saved automatically as a default file to be used again.

You can then select from the following options:

Replace default file

This option replaces an existing file having the default file name KxPdf.pdf.

Use default file + date and time

This option lets you use the default name and add a date and time stamp each time the document is saved.

Default file directory

This option lets you browse to a location to save your PDF.

Printing and Saving to PDF

You can print a document and save it to Adobe PDF, if you have installed the **Output to PDF** plug-in.

- 1 In **Device Settings > PDL Settings**, in the **Select PDL** list select **PDF**.
- 2 Click **Settings**.
- 3 In the **PDF Settings** dialog box, select **Print and save**.
- 4 Click **Settings**, and select from print and save options. See the **PDF Options** topic for details.
- 5 Click **OK** in all dialog boxes.
- 6 Open and print the document.
- 7 Name and save the PDF file.

XPS Driver

In Windows 7, Windows Vista, and Windows Server 2008, the XML Paper Specification (**XPS**) Page description language provides the most efficient method for displaying, processing, and printing documents.

The **XPS** driver supports a single PDL setting. The **XPS** driver can be installed from the **Product Library** disc. In the **Installation Method** menu, click **Custom Mode**, and on the **Custom Installation** page, select **KX XPS DRIVER**.

Compatibility Settings

Compatibility Settings lets you specify media source values, override the application's **Collate** setting, and combine the **Source** and **Media type** lists in the **Basic** tab.

In a client/server environment, this feature is unavailable to a client logged in as a restricted user.

Media Source Enumeration

Media source enumeration supports compatibility for media source values unique to the printer driver, such as those for cassettes or feeders. Your newly

installed printer driver maintains identical media source support with the driver it replaces, whether for this driver or one from another manufacturer. If media source macros exist for the older driver, then the alignment of media source values maintains support without the need to change the macros.

Setting Media Sources

Use the **Driver Info** utility (\Utility\Driver Info\DrvInfo.exe) to compare the source values for all installed drivers.

If the values for a given media source differ between printer drivers, you can reassign an enumerated value to create a match between the drivers.

- 1** In **Device Settings > Compatibility Settings**, from the **Media source enumeration** list select the paper supply method. The current value is listed in the **Enumerated value** box.
- 2** Type an **Enumerated value** for the media source, and click **Apply**. To align settings with a different driver, this value should align with those in the other driver.
- 3** Click **OK** in the **Compatibility Settings** and **Properties** dialog boxes.

You can restore all the options in **Compatibility Settings** to the default by clicking **Reset**.

Ignore Application Collation

This option bypasses the **Collate** setting in software applications, and gives priority to the printer driver setting.

With the check box selected, the printer driver **Collate** setting is used.

With the check box cleared, the application **Collate** setting is used.

Selecting Printer Driver Collation

You can ignore the collation setting in the application and use the printer driver collation setting.

- 1** In **Device Settings > Compatibility Settings**, select **Ignore application collation**.
- 2** Click **OK** in the **Compatibility Settings** and **Properties** dialog boxes.

You can restore all the options in **Compatibility Settings** to the default by clicking **Reset**.

Combine Source and Media Type Lists

You can change the driver's **Basic** tab so that **Media type** and **Source** are combined into one list, labeled **Source**. In the combined list, Media types are listed first, followed by cassettes and **MP tray**.

Creating a Combined Source List

You can combine the **Source** and **Media type** lists in the **Basic** tab to make one **Source** list.

- 1** In **Device Settings > Compatibility Settings**, select **Combine source and media type lists**.

- 2 Click **OK** in the **Compatibility Settings** and **Properties** dialog boxes.

You can restore all the options in **Compatibility Settings** to the default by clicking **Reset**.

Removing a Plug-in

You can remove an installed plug-in from the driver. If removed, the plug-in features do not appear in the driver interface.

Note: To remove the **Output to PDF** module, **PDF** must not be selected in the **PDL Settings** dialog box.

- 1 In **Device Settings**, click **Kyocera** logo > **Plug-in**.
- 2 Select a plug-in module from the list and click **Delete**, then **Yes**.
- 3 Click **OK** in all dialog boxes.

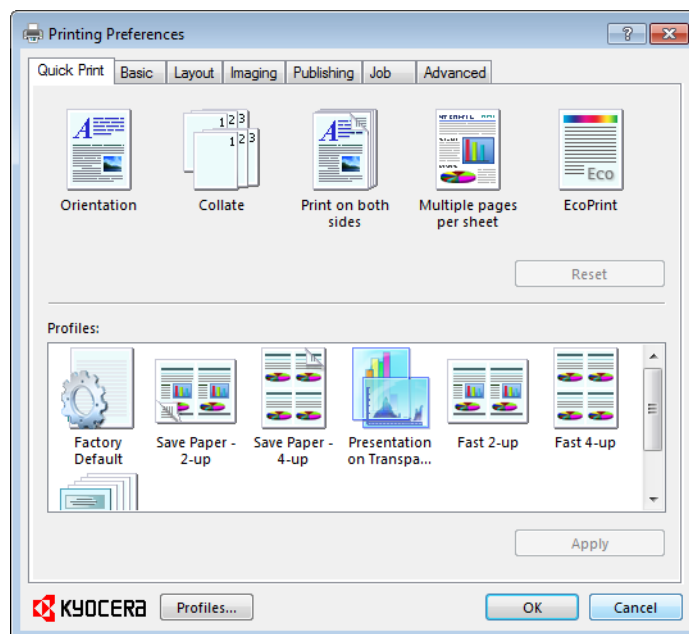
3 Quick Print

In the **Quick Print** tab, you can apply basic print settings to print jobs. Any **Quick Print** settings can be saved as a group, called a profile, and applied to any print job. Profiles support common printing tasks.

The administrator can set the view of the **Quick Print** tab through the **Installation** process, or in **Device Settings > Administrator > General**.

This chapter can be used as a separate **Quick Print** user guide when KX Driver support is controlled by an administrator.

To return to the original settings, click **Reset**. The **Reset** button is available when accessing the printer driver from the application's **Print** dialog box.



Quick Print Options

You can set one or more print options on the **Quick Print** tab. You can create your own customized view of print options with **Edit Quick Print**. And you can also select from profiles that have been set with predefined options for frequently run print jobs.

Common Printing Options

The upper section of the **Quick Print** tab has several icons that represent the most common options for print jobs. Click on the **Quick Print** icons to change settings for the print job. Some of these options also appear on the **Basic**, **Layout**, and **Imaging** tabs.

Orientation

This icon changes between portrait, landscape, portrait rotated, landscape rotated printing formats.

Collate

This icon changes the ordering of the printed pages. The page ordering sequence can either be 123, 123, or 111, 222 and so on. You can also reverse the order of the printed pages (321, 321) by selecting the **Reverse** check box in the **Basic** tab. (**Reverse** is available only when **Printer default** is not selected in **Basic > Destination**).

Print on both sides

This icon changes between duplex printing for flipping on the long edge, duplex printing for flipping on the short edge, or for not using duplex printing.

Multiple pages per sheet

This icon changes between Off, 2, and 4 for the number of pages printed on one sheet. For more than 4 pages per sheet, define these settings in **Layout > Multiple pages per sheet**.

EcoPrint

This icon changes the text and graphics to appear lighter in the printed job. **EcoPrint** does not increase print speed.

Edit Quick Print

This button lets you select the print option icons to display and in what order when you access the **Quick Print** tab. The **Edit Quick Print** button is not available when the driver is accessed from an application's **Print** dialog box.

Any basic print options can be **Reset** to the default values in the **Quick Print** tab. This button only appears when it is accessed from an application's **Print** dialog box.

The following sections describe some of the **Quick Print** tab options in more detail. **Collate**, **Duplex printing**, and **EcoPrint** can also be found in the **Basic** and **Imaging** tabs, and **Multiple pages per sheet** in the **Layout** tab. The **Profiles** options are accessed from **Printing Preferences**.

Collate

Collate specifies the order in which the pages of a multiple copy job are printed. With **Collate** selected, the first time the print job is sent to the printing system the data is rendered as page images in the printing system's memory. The remaining job copies are printed from the stored data. This avoids the extra processing involved in sending every copy from the computer to the printing system.

With **Collate** selected, the driver prints the complete job set by set. With **Collate** cleared, it prints each page by set. For example, with **Collate** selected, three copies of a five-page document output as pages one through five in succession, three times.

The printer driver automatically overrides the application's **Collate** setting and uses the printer driver setting. You can use the application's **Collate** setting by clearing the **Ignore application collation** check box in the **Compatibility Settings** dialog box accessed from **Device Settings**.

Duplex Printing

Duplex printing is printing on both sides of each page. Select **Print on both sides** to start duplex printing. The printing system contains a duplex unit that turns the paper over to allow printing on the reverse side. **Print on both sides** must be selected to print on both sides of the cover and insert pages.

Flip on long edge

Turn the long edge of the page to view the content.

Flip on short edge

Turn the short edge of the page to view the content.

Multiple Pages per Sheet

Multiple pages per sheet prints several pages on a single sheet of paper for the purpose of reviewing the document and conserving paper. The size and readability of the multiple pages decrease as the number of pages per sheet is increased. You can set the arrangement of the pages from the **Layout** tab as well as print borders around each of the pages.

When **Multiple pages per sheet** is selected, **Scaling** and **Poster** are unavailable.

Edit Quick Print

The assortment of icons at the top of the **Quick Print** tab can be customized to include features that you use most often. Any number of icons from 0 to 5 can be displayed. All icons can be removed from view if you want to use only the **Profiles** options in the **Quick Print** tab.

Note: An administrator can hide the **Edit Quick Print** button by selecting **Hide Edit Quick Print control** in **Device Settings > Administrator Settings**. The **Edit Quick Print** button is unavailable when the driver is accessed from an application's **Print** dialog box.

Editing Quick Print Options

You can select from a limited set of driver features to appear in the **Quick Print** tab.

- 1 Click **Start** and click **Devices and Printers** (Windows 7), or click **Control Panel** and double-click **Printers** (Windows Vista and Windows Server 2008), or **Printers and Faxes** (Windows XP and Windows Server 2003).
- 2 Right-click on the desired printing system model and click **Printing Preferences**.
- 3 Select the **Quick Print** tab.
- 4 Click **Edit Quick Print**.

To add a feature to the **Quick Print** tab, select the feature under **Available controls**, and click the right arrow to move the feature to **Selected controls**. A maximum of 5 features can appear under **Selected controls**.

To remove a feature from the **Quick Print** tab, select the feature under **Selected controls**, and click the left arrow to move the feature to **Available controls**. To use only the **Profiles** in the **Quick Print** tab, move all features to **Available controls**.

Click the up and down arrows to change the position of the features under **Selected controls**. The feature at the top appears on the left in the **Quick Print** tab.

To restore the list to factory default options, click **Reset**.
- 5 After making your selections, click **OK**.

Profiles

In **Profiles**, you can save printer driver settings as a profile. You can select multiple options in any **Printing Preferences** tabs, save them as a profile, and use all of them at once when you apply the profile. The profiles list always includes a **Factory Default** profile that returns the driver options to their default settings. The profiles can include **Common Profiles**, which are installed as optional components through the **Optional Printer Components**, and any custom profiles created. A maximum of 26 profiles can be established in one driver, including the **Factory Default** profile. Settings made in **Device Settings** cannot be saved to a profile.

Selecting a Profile

You can select and apply a profile from the **Quick Print** tab or from the **Profiles** dialog box.

Quick Print tab

- 1 In the **Quick Print** tab, select a **Profile**. The side panel displays a summary of the settings. Above the settings you can click the icons to choose between images of tone adjustment, the printing system, or page layout.
- 2 Click **Apply**.

Profiles dialog box

- 1 In any of the **Printing Preferences** tabs, click **Profiles**.
- 2 In the **Profiles** dialog box, select a profile. The dialog box displays a summary of the settings for that profile.
- 3 Click **Apply**.
- 4 Click **OK**.

Saving a Profile

The **Save** button lets you create your own profiles. You can select the printing options you want in the driver, then save the driver settings including your customizations as a profile. You can then use that profile to print the same type of print job again without having to reselect all the settings. In **Printing Preferences**, the **Profiles** button appears at the bottom of all the tabs.

- 1 Set the printing options you want for your print job by opening **Printing Preferences** and selecting all your driver settings.
- 2 Click **Profiles > Save**.
- 3 To identify the profile, type a **Name**, select an **Icon**, and type a **Description**.
- 4 Click **OK** to save the profile.
The newly added profile appears in the **Profiles** dialog box.

- 5 Click **Apply** to use the selected profile for the current print job, or click **OK** to close the dialog box.

Note: To reset the printer driver to default settings, select the **Factory Default** profile, and click **Apply**. This clears the settings of a selected profile.

You can remove a profile by selecting it in the **Select profile** list and clicking **Delete**.

Editing a Profile

The **Edit** button lets you make changes to an existing profile. The **Factory Default** profile cannot be edited.

- 1 Click **Profiles**.
- 2 In the **Select profile** section, select the profile to be edited, and click **Edit**.
- 3 Any of the three options can be edited: name, icon and description. Click **OK** to save the edited changes.
The newly edited profile appears in the **Profiles** dialog box.
- 4 Click **Apply** to activate the selected profile to the current print job, or click **OK** to close the dialog box.

Importing a Profile

The **Import** button lets you import a copy of a profile from other printer drivers into your printer driver.

- 1 Click **Profiles > Import**.
- 2 Browse for the existing profile (.KXP), select it, and click **Open**.
A message appears if any of the profile settings in the imported file are unavailable in the existing driver. Select **Yes**, to import the profile, or **No**, to cancel the import.
- 3 If you selected **Yes** in the previous step, the newly imported file appears in the **Profile** dialog box.
- 4 Click **Apply** to use the selected profile for the current print job, or click **OK** to close the dialog box.

Exporting a Profile

The **Export** button lets you export a copy of a profile from your printer driver for use in other printer drivers. The **Factory Default** profile cannot be exported.

- 1 Click **Profiles**.
- 2 In the **Select profile** section, select the profile to be exported, and click **Export**.

- 3 In the **Export Profile** dialog box, name and save the profile.
- 4 Click **OK** to close the **Profiles** dialog box.

Application Based Printing

An administrator can associate a profile with an application so that all printing from the application uses the same profile settings. This makes profiles easier to use and ensures consistent printing from an application. For example, a duplex printing profile can be applied to all spreadsheet printing to save paper, or reports in Microsoft Word can be set to print with consistent stapling and print quality.

Associations between profiles and applications can be created at any time in the **Profiles** dialog box. To use the associations in printing, you must select **Associate Profile with application** in **Device Settings > Administrator > General**.

A maximum of 25 associations can be created in the **Application Based Printing** dialog box, accessed from the **Profiles** dialog box.

In a client/server environment, a user on a client computer can view details about server associations but cannot change settings or select another profile.

Adding an Association

Once profiles have been created or imported, you can create an association between a profile and an application. Then the application always prints using the associated profile settings.

- 1 In any tab, click **Profiles** to open the **Profiles** dialog box.
- 2 Click **Application** to open the **Application Based Printing** dialog box.
- 3 Click **Add** to open the **Add Association** dialog box.
- 4 Enter a name for the association, to a maximum of 31 characters.
- 5 Under **File name**, enter a valid executable file name (.EXE) for an application that allows printing, or browse to find a file located on your computer.
- 6 Select a profile from the list.
- 7 Click **OK** in the **Add Association** and **Application Based Printing** dialog boxes to create the association.

You can remove an association by selecting it and clicking **Delete**.

Editing an Association

You can change the name, file, and profile for an association.

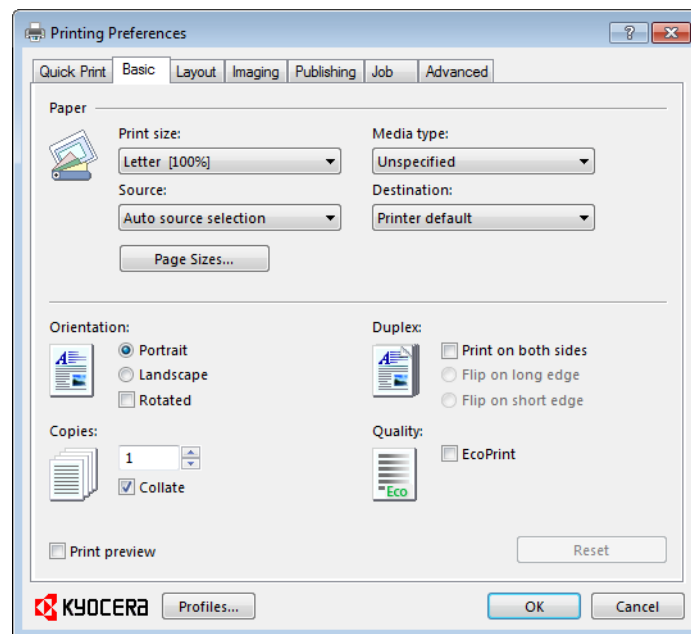
- 1 In any tab, click **Profiles** to open the **Profiles** dialog box.
- 2 Click **Application** to open the **Application Based Printing** dialog box.

- 3** Select an association to edit and click **Edit** to open the **Edit Association** dialog box.
- 4** Change desired settings under **Association name**, **File name**, or **Profile**.
- 5** Click **OK** in the **Edit Association** and **Application Based Printing** dialog boxes to save the revised association.

4 Basic

In the **Basic** tab, you can specify the most commonly used printer driver settings.

To return to the original settings, click **Reset**. The **Reset** button is available when accessing the printer driver from the application's **Print** dialog box.



Basic Settings

The **Basic** tab contains several settings for the most commonly used printing tasks.

Print size

This setting sets the size of the area that the printer prints to, regardless of the actual paper size that is used by the printing system.

Source

This setting specifies the cassette or tray that the printing system draws paper from. Unless you are using a custom paper type, you can leave it set to **Auto source selection**.

Page Sizes

This setting should match the page size setting in your application. The printing result is based on the page size specified in this setting. You can also create a custom page size.

Media type

This setting selects the **Source** based on the types of media that are specified in the printing system. In general, you can leave it set to **Unspecified**.

Destination

This setting specifies which output tray is used for the print job output.

Orientation

These settings specify the paper orientation of the print job. If **Rotated** is selected, the print job orientation is rotated 180 degrees.

Copies

This setting specifies the number of copies to print. For collating multiple copies, select **Collate**.

If **Reverse** is selected, the printed pages appear in reverse order. **Reverse** is available when **Printer default** is not selected under **Destination** in the **Basic** tab.

Duplex

These settings enable printing on both sides of a sheet of paper.

Quality

This **EcoPrint** check box makes the entire image, text and graphics, appear lighter in the printed job. This setting does not increase print speed.

Print Preview

This setting lets you view your document before printing.

Note: Some applications may override print settings made in the driver. Usually the application can be set to follow the settings. In Microsoft Word 2007, ensure that **Default tray** in **Options** is set to **Use printer settings**.

Source and Media Types

In the **Basic** tab, **Source** specifies which tray or cassette the printer uses for a printing job. The default is **Auto source selection**, which instructs the printer to search for the media requested by the application or the printer driver. If the selected tray or cassette empties during a print job, then the printer searches for another source, and continues the job.

Media type instructs the printer to search for the type of paper or media that is requested by the application or the printer driver. The choices shown may change depending on the selection in **Source**. If **Auto media selection** is selected, then the printer searches for another tray or cassette using the same media.

Transparencies, labels, envelopes, cardstock, and coated media must be supplied from the **MP tray**. Ensure the paper is properly loaded by following the instructions outlined in the printing system's *Operation Guide*.

Note: **Source** and **Media type** are separate items in the dialog box, but can be combined using the **Combine source and media type lists** setting in **Compatibility Settings**. If they are combined, **Media type** is not available on the **Basic** tab. To change this setting, open **Device Settings > Compatibility Settings** and clear the **Combine source and media type lists** selection.

Print Size and Page Size

Print size controls the output page size of the document. To use this setting, ensure that the **Page Sizes** setting matches the page size setting in your application. If the **Print size** is different from the page size in your application, then each page is enlarged or reduced to match the **Print size**. The percentage

value shown in brackets indicates the size of the **Print size** setting relative to the **Page Sizes** setting. If the **Page Sizes** does not match the page size setting in the application (the size of the original) then, in most cases the **Print size** is ignored and the document is printed based on its original size.

You can create a page size with your chosen dimensions for printing on non-standard size paper. For example, you can create a custom banner with a height from 5.82 inches (148.0 mm) to 14.01 inches (356.0 mm) and a width from 2.75 inches (70.0 mm) to 8.5 inches (216.0 mm). You can then save the custom setting to the **Page Sizes** and **Print size** lists for later selection.

Creating a Custom Page Size

To use custom page sizes, they must be created and added to the **Print size** list. The driver supports a maximum of twenty custom sizes.

- 1 In the **Basic** tab, click **Page Sizes**.
- 2 Click **New**.
- 3 A default custom name appears in the **Name** box. Type a name for your custom page size.
- 4 Type or select values for the height and width. If the height or width value exceeds the allowable limit, it automatically adjusts to the limit after **Apply** or **OK** is clicked.
- 5 When done, click **Apply**.

The custom page size appears in the **Print size** list, which is used for enlarging and reducing the sizes of prints.

To delete a custom page size from the **Page Sizes** dialog box, select the name of the custom page size and click **Delete**.

Printing with Custom Size Pages

You can print on custom-sized pages.

- 1 Load custom-sized paper into the MP tray.
- 2 In the **Basic** tab, select the name of your custom page size in the **Print size** list.
- 3 Click **OK** to return to the **Print** dialog box.
- 4 Click **OK** to start printing.

Duplex Printing

Duplex printing is printing on both sides of each page. Select **Print on both sides** to start duplex printing. If it is not selected, then the printer prints on only one side of each page. The printer system contains a duplex unit that turns the paper over to allow printing on the reverse side. **Print on both sides** must be selected to print on both sides of the cover and insert pages.

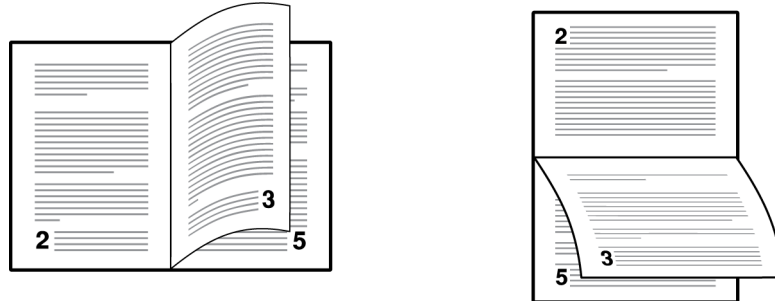
Flip on long edge

Turn the long edge of the page to view the content.

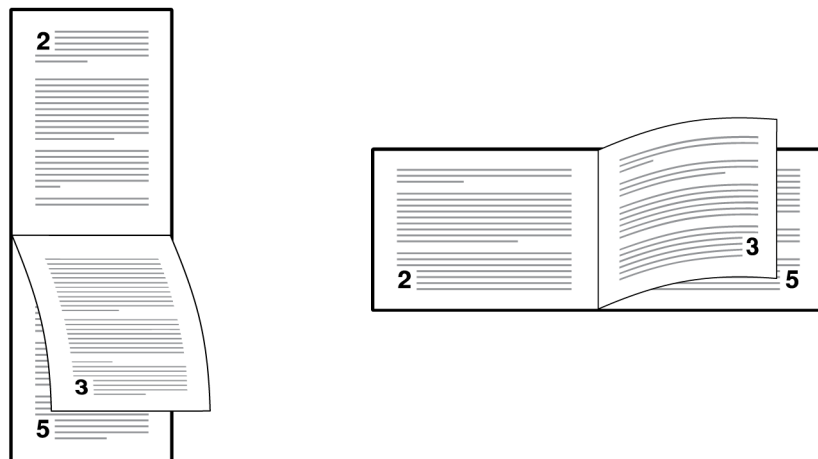
Flip on short edge

Turn the short edge of the page to view the content.

Flip on long edge



Flip on short edge



Printing in Duplex Mode

You can print on both sides of each page.

- 1** In the **Basic** tab, select **Print on both sides**.
- 2** Select either **Flip on long edge** or **Flip on short edge**.
- 3** Click **OK** to return to the **Print** dialog box.
- 4** Click **OK** to start printing.

Collate

Collate specifies the order in which the pages of a multiple copy job are printed. With **Collate** selected, the first time the print job is sent to the printing system the data is rendered as page images in the printing system's memory. The remaining job copies are printed from the stored data. This avoids the extra processing involved in sending every copy from the computer to the printing system.

With **Collate** selected, the driver prints the complete job set by set. With **Collate** cleared, it prints each page by set. For example, with **Collate** selected, three copies of a five-page document output as pages one through five in succession, three times.

The printer driver automatically overrides the application's **Collate** setting and uses the printer driver setting. You can use the application's **Collate** setting by clearing the **Ignore application collation** check box in the **Compatibility Settings** dialog box accessed from **Device Settings**.

Printing Collated Documents

When printing multiple copies of a multiple page document, the printer can assemble the pages of each copy in numerical order.

- 1 In the **Basic** tab, select the **Collate** check box.
- 2 Type or select the number of complete sets of the print job in the **Copies** box. The document page count must not exceed the printer tray capacity.
- 3 Click **OK** to return to the **Print** dialog box.
- 4 Click **OK** to start printing.

Quality

The **Quality** feature, **EcoPrint**, changes toner saturation in the printed job, making the entire print image, including text and graphics, appear lighter. The amount of toner varies based upon your printing system model and the type of data printed (text, graphics, or both). **EcoPrint** is also available in the **Quick Print** and **Imaging** tabs.

To enable this feature in the **Basic** tab, select the **EcoPrint** check box.

Print Preview

After selecting driver settings, you can use **Print preview** to check the print job before you proceed with printing. If you are satisfied with the preview, you can print. Or you can cancel printing if you want to change driver settings.

Previewing a Print Job

You can see a print preview before printing.

- 1 Select desired driver settings in all tabs, or select a profile.
- 2 In the **Basic** tab, select **Print preview**.
- 3 Click **OK** in the **Printing Preferences** and **Print** dialog boxes.
- 4 When the **Print preview** dialog box appears:
 - Click the arrow buttons to view document pages.
 - To close the preview and make additional changes in driver settings before printing, click the "X" button.

If you are satisfied with the preview, click the printer button to print the job.

Kyocera Logo

The **Kyocera** logo appears on the bottom portion of any **Printing Preferences** screen or **Device Settings** screen. Click the logo to open the **About** dialog box that displays the driver version number and driver plug-in information.

Displaying Version Information

In **Device Settings** or any tab, click **Kyocera** logo > **Version** to view the following driver information:

File Name

Version

Description

Date

Manufacturer

Comments

To view copyright information, click **Legal Notices**.

Click **OK** to close the driver information dialog boxes.

Displaying Plug-in Information

A plug-in integrates with the printer driver to extend the driver's capabilities.

In **Device Settings** or any tab, click **Kyocera** logo > **Plug-in** to view the following plug-in information:

Module

Description

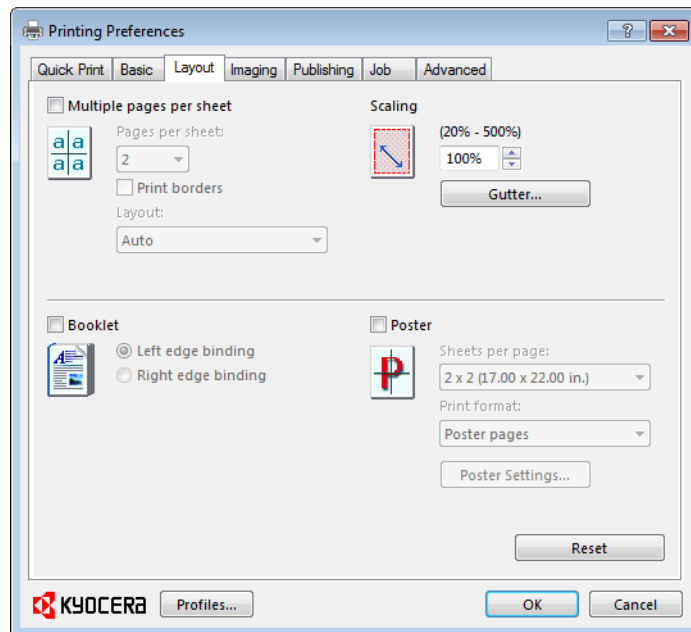
Version

Click **OK** to close the driver information dialog boxes.

5 Layout

In the **Layout** tab, you can arrange document data on printed pages without affecting the original document.

To return to the original settings, click **Reset**. The **Reset** button is available when accessing the printer driver from the application's **Print** dialog box.



Multiple Pages per Sheet

Multiple pages per sheet prints several pages on a single sheet of paper for the purpose of reviewing the document and conserving paper. The size and readability of the multiple pages decrease as the number of pages per sheet is increased. You can set the arrangement of the pages from the **Layout** tab as well as print borders around each of the pages.

When **Multiple pages per sheet** is selected, **Scaling** and **Poster** are unavailable.

Printing Multiple Pages per Sheet

You can print several pages on a single sheet of paper.

- 1 In the **Layout** tab, select **Multiple pages per sheet**.
- 2 In **Pages per sheet**, select the number of pages to print on each sheet of paper.
- 3 If you want to print a border around each page, select **Print borders**.

- 4 In the **Layout** list, select the direction the pages should flow.
- 5 Click **OK** to return to the **Print** dialog box.
- 6 Click **OK** to start printing.

Scaling

Scaling increases or decreases text and graphics on a page. You can also select a gutter setting that enlarges the margins to accommodate manual stapling or manual hole punch.

Scaling is unavailable when other **Layout** tab options are selected.

Setting Scaling on the Page

You can increase or decrease text and graphics on a page.

- 1 In the **Layout** tab, type or select a scaling percentage between 20 to 500.
Scaling adjusts proportionately the height and width of the page. A lower percentage reduces the page and a higher percentage enlarges the page.
- 2 Click **OK** to return to the **Print** dialog box.
- 3 Click **OK** to start printing.

Gutter

Gutter increases the margins around your text and graphics on the left side and at the top of the printed sheet. **Gutter** is often used for binding, hole punch, or stapling to make a print job easier to read. This creates a larger margin space by shifting the printable area to the right, or down, as much as one inch (25.4 mm).

Creating a Gutter

You can increase the margins on the left side and at the top of the printed sheet.

- 1 In the **Layout** tab, click **Gutter**.
- 2 In the **Gutter width** options, type or select a value between 0.20 to 1.00 inches (5.0 to 25.4 mm).

Short edge (top)

This selection modifies the outside margin on the top-edge of the page.

Long edge (left)

This selection modifies the outside margin on the left-side of the page.

Note: Availability of **Gutter** settings varies depending on **Orientation** and **Duplex** settings in the **Basic** tab.

- 3 If text extends too close to the edge of the page, select **Reduce image to fit**. The text appears slightly reduced and away from the edge of the page. If text does not extend beyond the page when the gutter increases, clear **Reduce image to fit**.
- 4 Click **OK** to save gutter settings, then click **OK** again to return to the **Print** dialog box.
- 5 Click **OK** to start printing.

Booklet

Booklet prints a two-page layout on both sides of each sheet of paper. You can fold and bind the booklet in the center. Folded booklets are half the size of the selected paper.

When **Booklet** is selected, other **Layout** tab options are unavailable.

A different paper source can be selected for the booklet cover. To include a cover on the booklet, select the **Publishing** tab, then select **Cover mode**.

Printing a Booklet

You can print a booklet.

- 1 In the **Layout** tab, select **Booklet**, and one of the two binding options.
 - Left edge binding**
This selection prints text that reads from left to right.
 - Right edge binding**
This selection prints text that reads from right to left.
- 2 Click **OK** to return to the **Print** dialog box.
- 3 Click **OK** to start printing.

Poster

The **Poster** feature lets you create a document to a size that is larger than the paper your printer can support. You can print a poster, or banner, up to 25 times larger than the original document. Segments of the poster document are printed on several sheets of paper and with the assistance of poster settings, you can reassemble the sheets easily to create a poster.

Use **Sheets per page** to select the poster size in relation to the original document size. Each option shows the number of sheets to be printed and the maximum poster size.

When **Poster** is selected, other **Layout** tab options are unavailable.

Note: **Sheets per page** displays the unit of measurement in inches or millimeters. You can change the **Units** setting in the **User Settings** dialog box, accessed from **Device Settings**.

Use **Print format** to print a proof sheet, along with the poster, to guide you in assembling the printed poster sheets.

Poster pages

This selection prints all of the sheets to be assembled as a poster.

Proof sheet

This selection prints all the poster pages on one sheet with markings that display the sheet assembly.

Poster pages and proof sheet

This selection prints all poster sheets and a one-page proof sheet.

Use **Poster Settings** to select options, in any combination to make it easier to create a poster. These options print visual cues on the poster sheets that provide help in cropping and assembling the pages.

Overlap edges

This selection duplicates the edges of document data on adjoining sheets. Poster appearance is improved when the edges overlap slightly. Select the check box, then type or select a value between 0.00 and 1.20 inches (0.0 and 30.4 mm). This option reduces the final poster size slightly.

Print crop marks

This selection prints a border at the edges of each poster sheet. You can crop each sheet on the border before assembling the sheets. This option ensures that data on adjoining sheets matches precisely.

Print assembly marks

This selection prints numbers at the edges of each sheet, matching numbers on adjoining sheets. Assemble each sheet edge to the same numbered edge on another sheet.

Printing a Poster

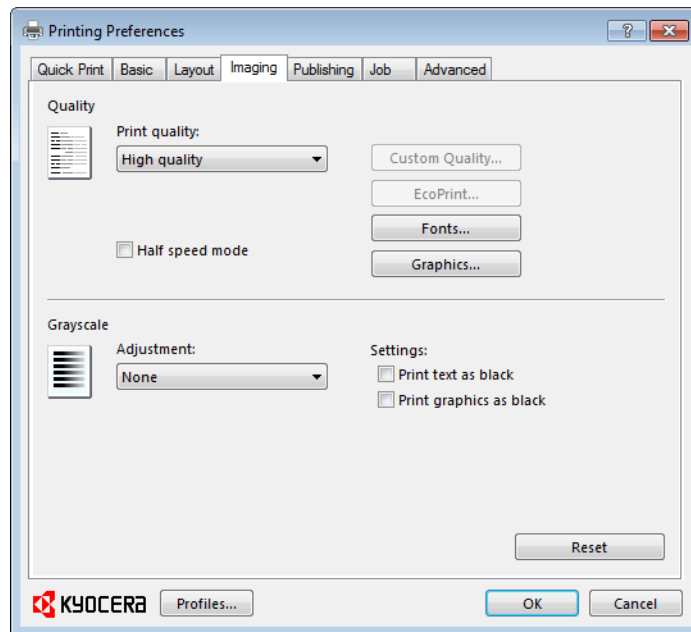
You can print a poster.

- 1** In the **Layout** tab, select **Poster**.
- 2** In **Sheets per page**, select the poster size. Each option describes the number of sheets it takes to represent one finished poster page.
- 3** Click **Poster Settings** to select options in any combination. These options ensure a precise assembly of the pages to create the poster.
- 4** In **Print format**, select one of the options for a finished print format.
- 5** Click **OK** to return to the **Print** dialog box.
- 6** Click **OK** to start printing.

6 Imaging

In the **Imaging** tab, you can manage print quality and grayscale settings.

To return to the original settings, click **Reset**. The **Reset** button is available when accessing the printer driver from the application's **Print** dialog box.



Print Quality and Custom Quality

Print quality lets you set the resolution for the print job. Resolution is a measurement, in dots per linear inch (dpi), that describes the sharpness and clarity of printed text and images. **Custom Quality** lets you set a more refined resolution for the print job. **Half speed mode** lets you reduce print speed to improve printing on small or thick paper.

Selecting Print Quality

In the **Imaging** tab, select a **Print quality** from the list. The number of selections in **Print quality** depends on the number of resolutions supported by the printing system.

High quality, Proof, Draft

Select one of these settings to print from the highest to the lowest print resolution. **Proof** is unavailable when **PCL 5e** is selected in the **PDL Settings** dialog box.

Custom

Custom lets you choose a setting for **Custom Quality** and **EcoPrint**.

Click **Custom Quality** to open a settings dialog box with selections for a more refined resolution. Depending on your model, **Resolution** can be set to

Fine 1200, Fast 1200 (unavailable for the PCL 5e Page description language), **600 dpi**, or **300 dpi**. **Kyocera image refinement** smoothes the edges of text and vector graphics and can be set to **On**, or **Off**.

Selecting EcoPrint

EcoPrint changes toner saturation in the printed job, making the entire print image, including text and graphics, appear lighter. The amount of toner varies based upon your printing system model and the type of data printed (text, graphics, or both). **EcoPrint** does not increase print speed. **EcoPrint** is also available in the **Quick Print** and **Basic** tabs.

- 1** In the **Imaging** tab, in the **Print Quality** list, select **Custom**.
- 2** Click **EcoPrint** to open the **EcoPrint** dialog box.
- 3** To start **EcoPrint**, select **On**; to stop it, select **Off**.
- 4** Click **OK** to close the **EcoPrint** dialog box.

Half Speed Mode

Half speed mode reduces the print speed to half the rated speed. When selected, the toner adheres better when printing on small size, thick, or textured paper. This mode may result in quieter printing.

Note: **Half speed mode** applies to all media types except **Transparency** and **Vellum**.

Fonts

A computer font is a data file containing a set of glyphs (visual representations of textual elements), characters, or symbols. Common terms for fonts are:

Outline fonts, in contrast to bitmap fonts, are defined as a set of mathematical lines and curves. An outline font is more easily scalable (designed to display and print clearly at any point size) than a bitmap font.

Bitmap fonts define each character as a pattern of pixels (the smallest resolvable rectangular areas of an image). Such fonts are not easily scalable and distort when reduced or enlarged.

Native fonts are the basic or original fonts installed with the computer operating system. TrueType fonts are the native fonts used by Microsoft Windows.

TrueType fonts are a type of scalable outline fonts. TrueType has long been the most common format for fonts on Microsoft Windows.

System fonts are the primary fonts used by the operating system. They are typically accessed through an application interface or through a common font dialog box.

Device fonts are stored either permanently or temporarily in the printing system memory.

Font Settings

The **Font Settings** dialog box lets you specify how TrueType fonts are sent to the printing system. The chosen method affects the speed and quality of the print job:

Download as outlines

This method is best suited for large documents or print jobs using multiple fonts and font sizes. Print speeds are faster because of the optimization features in this setting. The repetition of similar font data sent to the printing system is reduced, thereby increasing the print speed. Print speed is not increased when using Asian fonts such as Japanese, Chinese, and Korean, because of the large amount of font information used for these particular fonts.

Allow native download

This method improves text quality and increases print speed by converting TrueType fonts to Adobe Type 42 font format. This feature is available when **KPDL** is selected in the **PDL Settings** dialog box.

Download as bitmaps

Downloading fonts as bitmaps provides more detail, however it creates large file sizes. This is best suited for print jobs with custom fonts, very small fonts (point size 1-4), or Asian fonts.

Substitute with device fonts

System fonts and device fonts are automatically matched based on typeface name. This function increases print speed and efficiency. It is useful for changing a font used throughout a large document, by replacing the old font with the desired font.

Note: **GDI compatible mode** does not support **Substitute with device fonts**.

Selecting Font Settings

You can specify how TrueType fonts are sent to the printing system.

- 1 In **Imaging > Fonts**, select one of the methods for sending TrueType fonts.
- 2 Click **OK** to return to the **Print** dialog box.
- 3 Click **OK** to start printing.

Font Substitution

Font substitution is the process of using one font in place of another when the intended font is not available to a printing system. Font substitution may be critical for output of documents to printing systems that are not well supported by a large font inventory.

Setting Font Substitution

You can use one font in place of another.

- 1 Click **Start** and click **Devices and Printers** (Windows 7), or click **Control Panel** and double-click **Printers** (Windows Vista and Windows Server 2008), or **Printers and Faxes** (Windows XP and Windows Server 2003).

- 2 Right-click on the desired printing system model and click **Printing Preferences**.
- 3 In **Imaging > Fonts**, select **Substitute with device fonts**, and then click **Fonts**.
In the **Fonts Substitution** dialog box, the **System fonts** list shows the fonts installed on your computer. The **Available device fonts** list shows the printing system fonts.
- 4 Select the system font, and then the available device font to be substituted.
- 5 Click **OK** to save your settings.
If the device font does not have similar font characteristics to the system font, character spacing in the document may appear incorrect.

Disable Device Fonts

In some cases, the printing system substitutes fonts even if you send the TrueType fonts as outline fonts or bitmap images. Select **Disable device fonts** to prevent substitution of device fonts for TrueType fonts.

This option also improves portability of printable data. (If cleared, device fonts may not match when sent to a different printing system.)

Some Adobe applications have device font limitations. To overcome these limitations, select **Disable device fonts**. Device fonts are normally visible in the application font lists as printer icons next to the font name, unless there are equivalent system fonts, in which case the “TT” TrueType icon remains.

Disabling Device Fonts

You can prevent substitution of device fonts for TrueType fonts.

- 1 In **Imaging > Fonts**, select the **Disable device fonts** check box.
- 2 Click **OK** to save your settings.

Graphics

Graphics are pictorial representations of information. Graphics can be functional (charts, diagrams) or artistic (drawings, photographs). **Graphics Settings** let you select options for your printed graphics.

Note: Some options are available only when a specific PDL is selected.

Selecting Graphics Settings

- 1 In the **Imaging** tab, click **Graphics**.
- 2 In the **Graphics Settings** dialog box, select from the available options, and then click **OK** to save your selections.

Pattern Scaling

Pattern scaling is a feature that can help improve visual compatibility between screen and print output. Graphics objects, such as a shape or a path, often

include patterns and fills that are composed of collections of printed dots. A pattern is a planned or random repetition of colors, shapes, lines, values, and textures to create a visual arrangement. A fill is the application of a color or grayscale to a graphics object. If printed patterns and fills do not match the appearance of that on the screen, use **Pattern scaling** to select a different density of printed dots.

In **Imaging > Graphics settings**, select **Pattern scaling** settings.

Auto (default setting)

This setting prints patterns and fills to match the on-screen appearance.

Coarse

This setting prints patterns and fills with the fewest number of lines, patterns, or dots. Coarse is the same as Auto when **PCL XL** or **PCL 5e** is selected in the **PDL Settings** dialog box.

Medium

This setting prints patterns and fills with a greater number of lines, patterns or dots than the Coarse setting. Medium is the same as Auto when **KPDL** is selected in the **PDL Settings** dialog box.

Fine

This setting prints patterns and fills with the greatest number of lines, patterns, or dots. Printed patterns and fills may appear more dense than the on-screen appearance.

Line Thinning

Line thinning reduces the pen width of lines used for barcodes and line drawings. Drawing values controlled by an application are not changed.

Line thinning is available when **PCL XL** is selected in the **PDL Settings** dialog box. When **GDI compatible mode** is selected in the **PDL Settings** dialog box, Line thinning is not available.

Off (default setting)

Line thinning is not applied.

Barcodes

This setting reduces the pen width value for vertical and horizontal lines. It improves the readability of barcodes.

Fine lines

This setting reduces the pen width value for vertical, horizontal, and diagonal lines.

All

This setting reduces the pen width by a value of 1 for vertical, horizontal, and diagonal line used in barcodes or line drawings.

Correct fine lines by device

This option enables correction of pen width by device.

Inversion Options

Inversion is the opposite of the normal order, arrangement, or position of an image or printed content.

In **Imaging > Graphics Settings**, select **Inversion options**. The settings are available when **KPDL** is selected in the **PDL Settings** dialog box.

Reverse image

This setting prints images like a photo negative, reversing black and white areas of the image.

Mirror print

This setting prints the page content backwards, as it would appear in a mirror image.

Optimization

Optimization is a process or methodology of improving a printing system's function or effectiveness.

In **Imaging > Graphics Settings**, select **Optimization**. The settings are available when **KPDL** is selected in the **PDL Settings** dialog box.

Fast printing

This setting increases print speed and decreases spool size. It delivers images in binary format. It can be used for most everyday printing needs.

Document portability

This setting creates a PostScript file in ASCII text encoding. Unlike the binary format created in **Fast printing**, the ASCII text created with this selection can be edited.

CIE Option

CIE optimization bypasses the normal procedure of processing every aspect of the CIE color space used in applications such as Adobe Acrobat and Photoshop. This feature increases print speed for documents printed from these applications by optimizing CIE data. It has no effect on print jobs that do not use CIE data. **CIE optimization** should be selected for speed not accuracy, so printed output may be different from appearance on the screen.

In **Imaging > Graphics Settings**, select the **CIE optimization** check box. **CIE optimization** is available when **KPDL** is selected in the **PDL Settings** dialog box.

Halftone Screen

Halftone Screen lets an experienced user print different shades of gray as are found in photographs. Shades are produced by printing dots of various sizes and shapes, and by spacing them closer or farther apart. Shading can also be adjusted by the number of rows of data, the angle of the rows, and the shape of the data.

Halftone Screen is available when **KPDL** is selected in the **PDL Settings** dialog box. It is unavailable when **GDI compatible mode** is selected in the **PDL Settings** dialog box.

Setting the Halftone Screen

Halftone Screen provides a means to apply shades of gray to black and white printed output.

- 1** In **Imaging > Graphics Settings**, click **Halftone Screen**.
- 2** Clear the **Use printer's default screens** check box.
- 3** Set the available options to the desired values:
Ink

Lists the halftone screens available. For black and white printers, this option appears unavailable and is permanently set to **Black**.

Frequency

Displays the number of rows of dots per inch or centimeter. Set the range from 2.0 to 999.9, and select lines/inch or lines/cm.

Angle

Sets the angle at which rows are aligned. Set the range from -180 to 180 degrees.

Shape

Select the shape of the halftone dot:

Ellipse

Resists optical jump. An optical jump occurs when an area of an image suddenly become darker. An ellipse shape provides a smooth gradation of tones. Select **Ellipse** for images with dark areas.

Round

Resists moiré formation and dot gain. Moiré formation is an unintended pattern that occurs when two or more colors are printed at the wrong angles. The correct angles depend on the number of colors being printed. Dot gain is when the halftone dots increase when printed, causing a moiré pattern. Select **Round** for images with light tints and highlighted areas.

Line

Used for special effect. Select **Line** to change the effect by selecting a different angle.

- 4** Select **Increase accuracy of screens** for better print quality, possibly increasing print time.
- 5** Click **OK** to return to the **Print** dialog box.
- 6** Click **OK** to start printing.

Adjusting Grayscale

The grayscale adjustment settings change the **Brightness** and **Contrast** of graphics. These settings are useful if graphic images are printing too light, too gray, or too dark. Text remains unaffected.

- 1** In the **Imaging** tab, under **Adjustment**, select **Custom**.
A preview image in the **Adjustment Settings** dialog box illustrates any brightness and contrast changes.
- 2** Drag the **Brightness** slider right to lighten, or left to darken the graphic images of the print job.
You can also change brightness by entering a numeric value in the text box at the right. The brightest setting is +100; the darkest is -100. Zero is the default mid-level setting. Adjusting brightness is useful when graphic images are printing too dark or too light.

- 3 Drag the **Contrast** slider right or left to increase or decrease the proportion of light to dark in the graphic images of the print job.

A high contrast setting decreases the grayscale spectrum, making light grays lighter and dark grays darker. A low contrast setting increases the grayscale spectrum, making light grays darker and dark grays lighter.

You can also change contrast by entering a numeric value in the text box at the right. The highest contrast setting is +100; the lowest is -100. Zero is the default mid-level setting. Adjusting contrast is useful if graphic images are printing too gray, or too black and white.

- 4 Click **OK** to save your grayscale adjustment settings.

Text and Graphics Effects

Special settings are available for printing.

Print text as black

This option prints all color text as black. It produces faster printing of color text by reducing the amount of data sent to the printer. In black and white printers, it increases the detail for light-colored text printed. White text and image colors are unaffected.

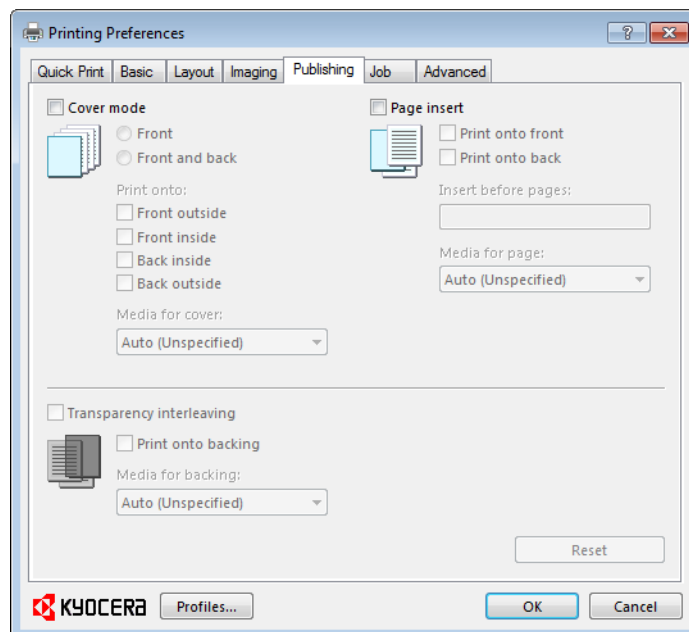
Print graphics as black

This option prints all color graphics with black, rather than grayscale. This feature is intended for CAD applications.

7 Publishing

In the **Publishing** tab, you can create covers and inserts for a print job, and add backing sheets between transparencies.

To return to the original settings, click **Reset**. The **Reset** button is available when accessing the printer driver from the application's **Print** dialog box.



Cover Mode

Cover mode lets you add cover pages for the front and back of your document. You can print on cover pages of a different weight or color than the main document. The source of the cover paper is specified by adjusting the **Media for cover** settings in the **Publishing** tab.

Print on both sides must be selected in the **Basic** tab or **Quick Print** tab in order to print using the **Front inside** or **Back outside** options.

Although **Cover mode** and **Page insert** can be used simultaneously, they cannot be used with **Transparency interleaving**.

Printing Covers

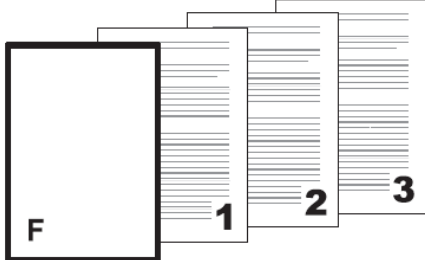
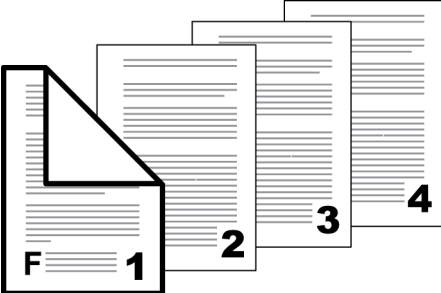
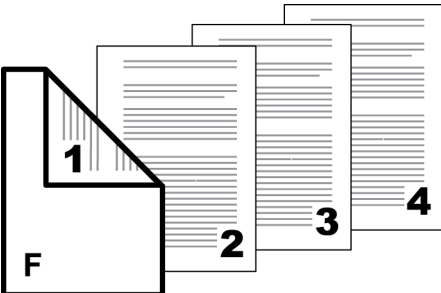
You can choose cover pages for printing.

- 1 In the **Publishing** tab, select **Cover mode**.
- 2 Select **Front** or **Front and back** to specify the type of covers.
- 3 Select from **Print onto** options if you want to print on the covers.

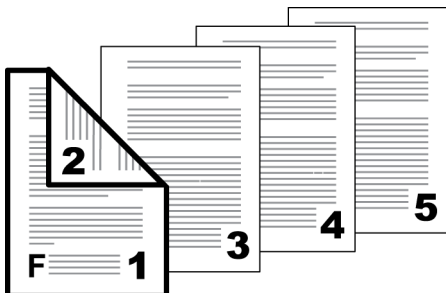
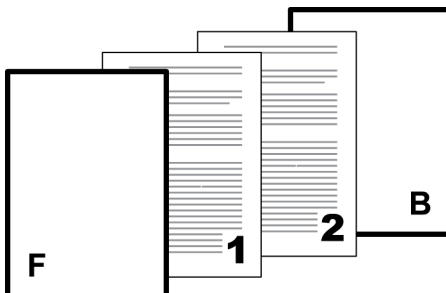
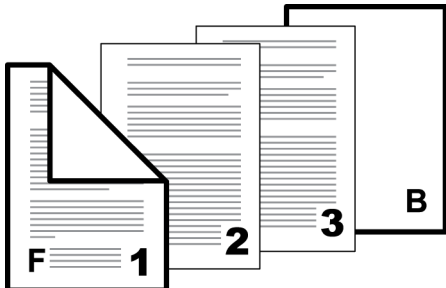
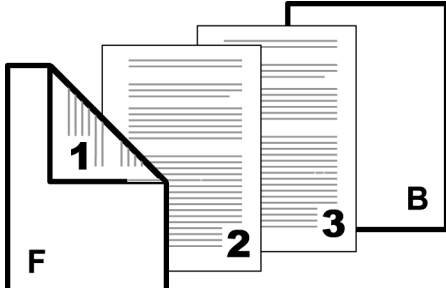
4 Click **OK** to return to the **Print** dialog box.

5 Click **OK** to start printing.

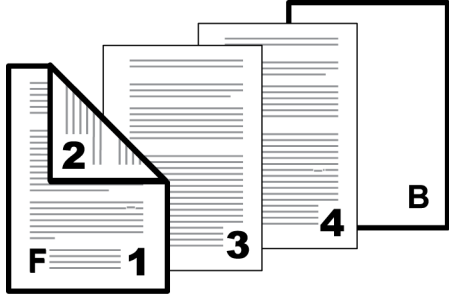
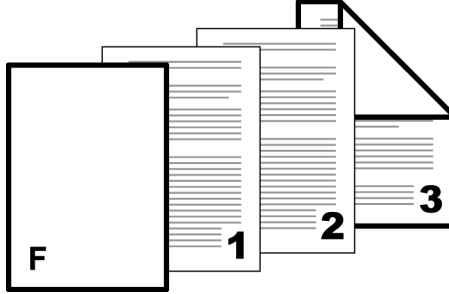
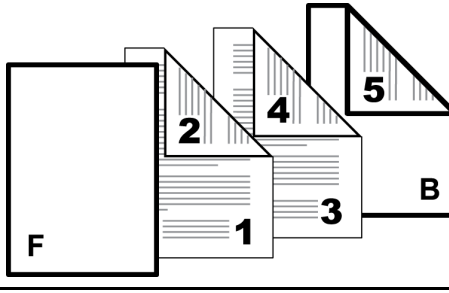
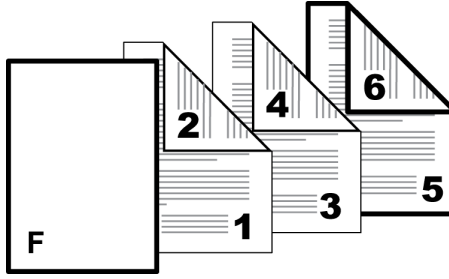
Cover Mode Options

Check Box Selection	Cover Insertion Type
Front	Inserts a blank front cover. 
Front Front outside	Prints on the outside surface of the front cover. 
Front Front inside	Prints on the inside surface of the front cover. 

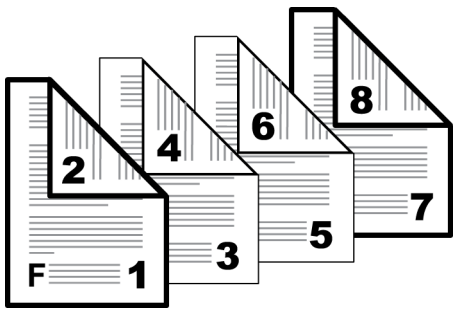
— continued

Check Box Selection	Cover Insertion Type
<p>Front</p> <p>Front outside</p> <p>Front inside</p>	<p>Prints on the outside and inside surfaces of the front cover.</p> 
<p>Front and back</p>	<p>Inserts blank front and back covers.</p> 
<p>Front and back</p> <p>Front outside</p>	<p>Prints on the outside surface of the front cover and inserts a blank back cover.</p> 
<p>Front and back</p> <p>Front inside</p>	<p>Prints on the inside surface of the front cover and inserts a blank back cover.</p> 

— continued

Check Box Selection	Cover Insertion Type
Front and back Front outside Front inside	<p data-bbox="954 255 1404 315">Prints on both sides of the front cover and inserts a blank back cover.</p> 
Front and back Back inside	<p data-bbox="954 651 1404 741">Prints on the inside surface of the back cover and inserts a blank front cover.</p> 
Front and back Back outside	<p data-bbox="954 1070 1404 1160">Prints on the outside surface of the back cover and inserts a blank front cover.</p> 
Front and back Back inside Back outside	<p data-bbox="954 1489 1404 1541">Prints on both sides of the back cover and inserts a blank front cover.</p> 

— continued

Check Box Selection	Cover Insertion Type
Front and back Front outside Front inside Back inside Back outside	Prints on both sides of the front and back covers. 

Choosing Cover Media

You can select media for the cover.

- 1 In the **Publishing** tab, select **Cover mode**.
- 2 In the **Media for cover** list, select the media type or source cassette for the front and back covers. When you choose the media type, a source cassette matching that media type is automatically selected.
- 3 Click **OK** to return to the **Print** dialog box.
- 4 Click **OK** to start printing.

Page Insert

A **Page insert** is a preprinted page or a page of a different paper type that is inserted at specified points in a print job. The inserted page can also be printed on during the print job. Both sides of the page insert can be printed on by using the duplex unit.

Print on both sides must be selected in the **Basic** tab or **Quick Print** tab in order to print using the **Print onto back** option.

Although **Cover mode** and **Page insert** can be used simultaneously, they cannot be used with **Transparency interleaving**.

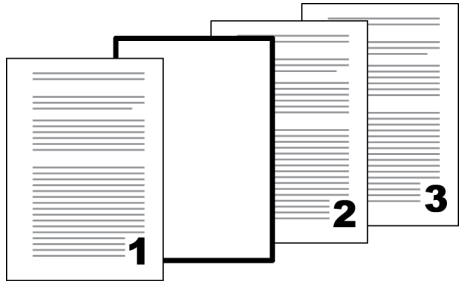
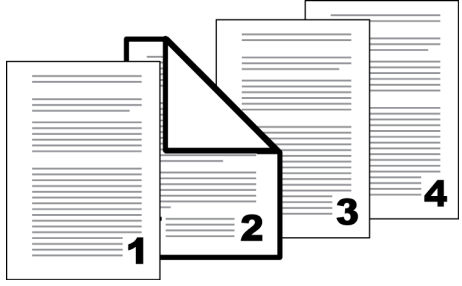
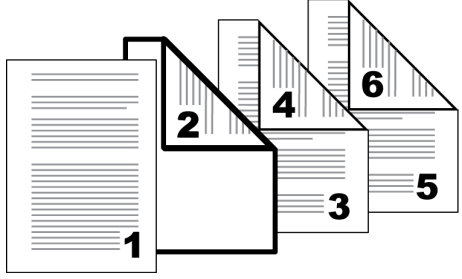
Printing Page Inserts

Several ways are available to arrange page inserts: you can print on one or both sides or insert a blank sheet.

- 1 In **Publishing > Page insert**, select the option corresponding to your desired page arrangement.
- 2 To print on both the front and back of the inserted page, select the **Print onto front** and **Print onto back** check boxes.
- 3 In **Insert before pages**, type the page number to insert. A page is inserted between the page number you typed and the page before it.

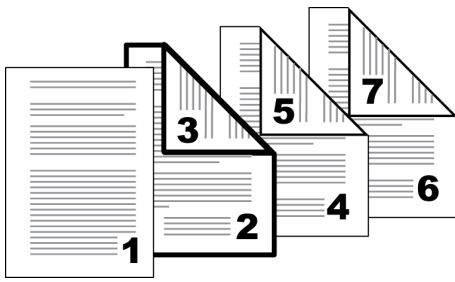
- 4 From the **Media for page** list, select the media type of the inserted page or the source paper cassette. When you choose the media type, a source cassette matching that media type is automatically selected.
- 5 Click **OK** to return to the **Print** dialog box.
- 6 Click **OK** to start printing.

Page Insertion Options

Check Box Selection	Page Insertion Type
Page insert	Inserts a blank page. 
Page insert Print onto front	Prints on the front side of the inserted page. 
Page insert Print onto back	Prints on the back side of the inserted page. 

— continued

Check Box Selection	Page Insertion Type
Page insert Print onto front Print onto back	Prints on both sides of the inserted page.



Transparency Interleaving

Transparency interleaving inserts a backing sheet between printed transparencies. The backing sheet, also known as an interleaf, helps keep transparencies clean and prevents them from clinging together. This feature is only available when printing on transparencies supplied from the **MP tray**. You can print the same content on the backing pages as on the transparencies.

Transparency interleaving cannot be used together with **Cover mode** or **Page insert**.

Inserting Backing Sheets Between Transparencies

You can insert backing sheets between transparencies.

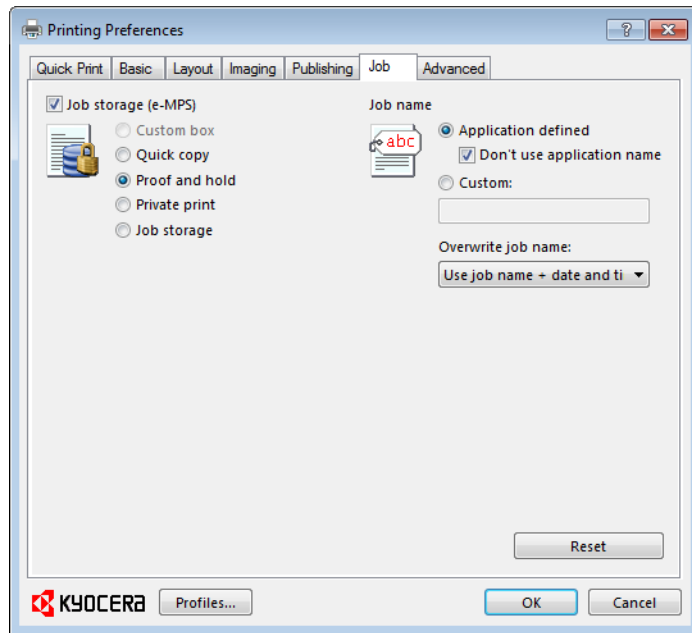
- 1** In **Basic > Media type**, select **Transparency**. If the **Source** and **Media type** lists have been combined (by a selection in **Device Settings > Compatibility Settings**), **Media type** does not appear. Instead, in the **Source** list select **Auto (Transparency)**.
- 2** In **Publishing**, select **Transparency interleaving**.
- 3** To print the transparency content on the inserted pages also, select the **Print onto backing** check box.
- 4** In the **Media for backing** list, select the **Media type** of the backing sheet or the **Source** paper cassette. When you choose the media type, a source cassette matching that media type is automatically selected.
- 5** Click **OK** to return to the **Print** dialog box.
- 6** Click **OK** to start printing.

The printing system's operation panel prompts you to load transparencies into the **MP tray**, and if necessary, load backing paper into the selected cassette.

8 Job

In the **Job** tab, you can store print jobs in the memory installed in the printing system. You can also select a **Job name** to use with Job storage features. You can use this tab to set or change the default settings that apply when you print a document from a Microsoft Windows application.

To return to the original settings, click **Reset**. The **Reset** button is available when accessing the printer driver from the application's **Print** dialog box.



Job Storage (e-MPS)

Job storage (e-MPS) offers a set of options for saving print jobs in printing system memory, so that you can print or reprint them later. Print jobs can easily be reprinted later using the printing system's operation panel, and printing of sensitive documents can be restricted to approved users.

E-MPS is a multitier solution that provides advanced print management, directly from the desktop. By storing a job in the printing system, you can print it from the operation panel without sending it again from the computer.

To use the **Job storage (e-MPS)** features, you can set a user name in the **User Settings** dialog box, available in **Device Settings**. If you do not set a user name, the Windows login user name is the default.

Job Storage (e-MPS) options

	Storage location	Access code required	When job is printed	When job is deleted from memory

— continued

Custom box	SSD	Optional password	When printed from operation panel	When manually deleted or up to 31 days
Quick copy	SSD or SD card	No	When sent from the computer	When printing system is turned off or storage device is full
Proof and hold	SSD, RAM disk, or SD card	No	One print when job is sent; remaining prints later	When printing system is turned off
Private print	SSD, RAM disk, or SD card	Yes	When access code is entered at operation panel	When printing system is turned off or after printing
Job storage	SSD or SD card	Optional	When printed from operation panel	When manually deleted

Custom Box

Custom Box lets you store print jobs until they are printed from the printing system's operation panel. You can print one or more jobs from the SSD.

Print jobs can be deleted after printing or saved on the SSD for 1-31 days.

To use custom boxes, each custom box must be set up using the printing system's operation panel or Command Center RX. They must also be set up in the **SSD Settings** dialog box, accessed from **Device Settings**. The maximum number of custom boxes is 100.

Storing a Job in a Custom Box

After custom boxes are assigned, you can send print jobs to custom boxes, where print jobs are stored on the printing system's SSD.

- 1** In the **Job** tab, select **Job storage (e-MPS)**, then select **Custom box**.
- 2** Click **Settings**.
- 3** Select a **Custom Box Settings** option:

Select **Use specific box number**, and type the box number and password.

Select **Prompt for box number**, and click **OK**. When the **Custom Box** dialog box appears, type a box number. If a password was set, type the password.

Select **Display box number list**, and click **OK**. When the **Custom Box** dialog box appears, select a box from the list. If a password was set, type the password. This can be selected when **Shared box** is selected in the **SSD Settings** dialog box.

Select **Verify box number for each login user**, and click **OK**. When the **Custom Box** dialog box appears, type a box number. To include a password, select **Require password** and type the password. This can be selected when **Shared box** is selected in the **SSD Settings** dialog box.

With **Verify box number for each login user** selected, the driver searches for a login user name from the custom box list to serve as the custom box name:

If a match is found, the custom box is used for the print job.

If a match is not found, the driver checks for administrator or user permissions. With administrator permissions, you will be prompted to type a box number and optional password for the print job. The driver searches for a Windows login user name and adds this name with the box number and password to the custom box list in the driver. With user permissions, the print job is canceled. You will be prompted to contact an administrator to establish printing permissions.

Quick Copy

Quick copy is a **Job storage (e-MPS)** option that prints all copies of a print job and stores the job temporarily on a storage device for reprinting later. This feature is available when an SSD or SD card is installed and selected in **Device Settings** as the storage device.

Quick copy is useful for printing the job again later in the day when you need additional copies at short notice. You can set the number of additional copies, and print the job from the printing system's operation panel without sending the job again from the computer.

The number of **Quick copy** or **Proof and hold** jobs that can be stored is set at the printing system's operation panel to a maximum of 50 jobs. When the designated number of jobs is reached, older jobs are replaced by new jobs. All **Quick copy** jobs are stored on the storage device after printing but are deleted when the printing system is turned off. You can manually delete a job at the operation panel.

Warning: A print job can replace a job on the storage device having the same user name and job name. To prevent this, select **Use job name + date and time** under **Overwrite job name**.

Note: If you are using this feature with an SD card, clear the **RAM disk** check box in **Device Settings**. The RAM disk settings in the device must also be turned off.

Printing a Quick Copy Job

With an SSD or SD card installed, **Quick copy** lets you print a document and save it in the printing system until the job is manually deleted or the printing system is turned off.

- 1 In the **Job** tab, select **Job storage (e-MPS)**.
- 2 Select **Quick copy**.
- 3 Click **OK** in all dialog boxes.

Proof and Hold

Proof and hold is a **Job storage (e-MPS)** option that prints one copy of a print job so that you can proof it before printing the remaining copies. This feature is available when an SSD, a RAM disk, or an SD card is installed in the printing system and selected in **Device Settings** as the storage device.

After the proof copy is printed and checked, remaining copies can be printed from the printing system's operation panel without sending the job again from the computer. If desired, you can change the number of copies printed.

Note: **Proof and hold** is not available for some applications such as Microsoft Excel.

The number of **Proof and hold** or **Quick copy** jobs that can be stored is set at the printing system's operation panel, to a maximum of 50 jobs. When the designated number of jobs is reached, older jobs are replaced by new jobs. All **Proof and hold** jobs are stored on the storage device after printing but are deleted when the printing system is turned off. You can manually delete a job at the operation panel.

Warning: A print job can replace a job on the storage device having the same **User name** and **Job name**. To prevent this, select **Use job name + date and time** under **Overwrite job name**.

Printing a Proof and Hold Job

Proof and hold lets you print one copy of a multicopy job to proof before printing the remaining copies. The job is stored on the SSD, RAM disk, or SD card until the printing system is turned off or the job is manually deleted.

- 1 In the **Basic** tab, select the number of copies to be printed.
- 2 Open the **Job** tab.
- 3 Click **Job storage (e-MPS)**.
- 4 Click **Proof and hold**, and click **OK**.

Private Print

Private print jobs are saved on the SSD, RAM disk, or SD card for printing until a four-digit **Access code** is entered. When the storage device reaches maximum capacity and a new job is sent to be stored, the oldest stored job is replaced by the new job. **Private print** jobs are deleted when the printing system is reset or turned off. If you do not want the job deleted, select the **Job storage** feature.

When sending a sensitive document to the printing system, a user must type a four-digit **Access code**, which is attached to the print job along with the **Job name** and **User name**. The job is not printed until a user enters the **Access code** at the printing system's operation panel. After the job is printed, it is removed from printing system memory.

The number of **Private print** jobs that can be stored is limited only by the capacity of the storage device. You can manually delete a job at the operation panel.

Warning: A print job can replace a job on the storage device having the same **User name** and **Job name**. To prevent this, select **Use job name + date and time** under **Overwrite job name**.

Storing a Private Print Job

Private print lets you store a document temporarily in printing system memory without printing, and protect it with an access code. The job is stored on the SSD, RAM disk, or SD card until it is printed, manually deleted, or turned off.

- 1 In the **Job** tab, select **Job storage (e-MPS)**.
- 2 Select **Private print**.
- 3 In the **Access code** box, type four numbers if you want to restrict access to your document.
- 4 Click **OK**.

Job Storage

Job storage is a **Job storage (e-MPS)** option that lets you store a print job permanently on a storage device for printing later. You also have the option of protecting the print job from unauthorized printing by using an access code. This feature is available when an SSD or SD card is installed and selected in **Device Settings** as the storage device.

Job storage is useful for jobs that need to be available for printing at any time, even if the printing system has been turned off and turned on again. **Job storage** jobs can only be removed manually from printing system memory.

If desired, you can attach a four-digit access code to a **Job storage** job, so that you can print a job without anyone else seeing it, or restrict printing to approved users. When the access code is used, the job is not printed until a user prints it at the printing system's operation panel. After the job is printed, it remains in printing system memory.

The number of **Job storage** jobs that can be stored is limited only by the capacity of the storage device. You can manually delete a job at the operation panel.

Warning: A print job can replace a job on the storage device having the same user name and job name. To prevent this, select **Use job name + date and time** under **Overwrite job name**.

Note: If you are using this feature with an SD card, clear the **RAM disk** check box in **Device Settings**. The RAM disk settings in the device must also be turned off.

Storing a Job Storage Job

Job storage lets you store a document permanently in printing system memory without printing, and gives you the option to protect it with an access code. This job remains on the SSD or SD card until it is manually deleted.

- 1 In the **Job** tab, select **Job storage (e-MPS)**.
- 2 Select **Job storage**.
- 3 In the **Access code** box, type four numbers if you want to restrict access to your document.
- 4 Click **OK** in all dialog boxes.

Job Name

A **Job name** is a unique identifier for each print job. It helps you find and print your job from the printing system's operation panel. When you send a print job using one of the **Job storage (e-MPS)** options, you can assign a custom name to the job or use the name of the application file.

For Microsoft Word and PowerPoint, you can choose to include or omit the application name from the application defined **Job name**. You can also ensure that jobs in printing system memory are not replaced by new jobs having the same **Job name**.

Don't Use Application Name

Don't use application name is an option to remove the application name from the job name in job storage features. By selecting **Don't use application name**, the file name you choose appears clearly in the job list. This feature is applicable only when printing from Microsoft Word or PowerPoint.

Overwrite Job Name

Overwrite job name is an option to ensure that a saved print job is not replaced in printing system memory by a new job having the same **Job name**. If a user sends two print jobs with the same **User name** and **Job name**, the second job replaces the first job without any prompt. To prevent this, **Overwrite job name** can automatically change the **Job name** by adding the date and time the job is sent. This feature also helps you to track when print jobs were sent from the computer.

The selected option applies to a **Job name** with either **Application defined** or **Custom** selected. **Overwrite job name** options include:

Replace existing file

This option lets the current print job replace an existing job in printing system memory, if a job with the same **User name** and **Job name** exists.

Use job name + date and time

This option adds the current date and time to the end of the **Job name**, in the format:

mmddy hhmss

The previous print job with the same job name remains in the printing system memory.

Selecting a Job Name

You must select a job name to use with **Job storage (e-MPS)** features, so that you can find your job in job lists on the printing system's operation panel. The selected job name is saved with the print job when the job is sent to printing system memory.

1 In the **Job** tab, select **Job storage (e-MPS)**.

2 Under **Job name**, select a name:

Application defined

This option uses the name of the application document as the job name. For Microsoft Word or PowerPoint documents, selecting **Don't use application name** removes the name of the application so that only the document name appears as the job name.

Custom

This option uses a unique name for each job. Type a name in the box, up to 79 characters.

- 3** Select an **Overwrite job name** option in case a job already exists in printing system memory with the same job name:

Replace existing file

If a job with the same user name and job name exists, the current print job replaces an existing job in printing system memory.

Use job name + date and time

This option adds the current date and time to the end of the job name, in the format:

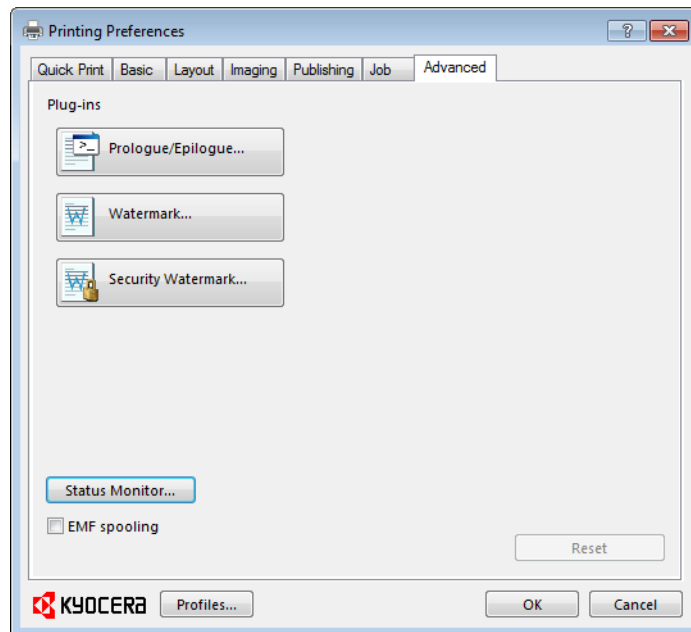
mmddy hhmmss

The previous print job with the same job name remains in the printing system memory.

9 Advanced

In the **Advanced** tab, you can choose special features that extend the capabilities of the printing system.

To return to the original settings, click **Reset**. The **Reset** button is available when accessing the printer driver from the application's **Print** dialog box.



Prologue/Epilogue

The **Prologue/Epilogue** feature lets you insert a command file at the beginning of a print job or at the end. The command file, prepared in a text editor, utilizes programming commands from the printer resident PRESCRIBE language. The **Product Library** disc includes a PRESCRIBE command language reference guide. A command file is a set of instructions the printing system interprets to produce a given output. For example, a **Prologue/Epilogue** command file may contain a macro that places a graphic object such as a logo at the top of a letterhead document.

Selecting a Prologue/Epilogue File

A **Prologue/Epilogue** file must be available on your computer before it can be added to a print job. To create this file, use a text editor like Windows Notepad.

In **Advanced > Prologue/Epilogue**, select a **Prologue/Epilogue** file name to insert into the print job. (If no file names are visible in the list, you must click **Add** to browse for files on your computer or network to add to the list.) After the file is selected, insertion point options become available.

Editing a Prologue/Epilogue File

You can edit a **Prologue/Epilogue** file on your computer.

- 1 In **Advanced > Prologue/Epilogue**, select a **Prologue/Epilogue** file name from the list, and then click **Edit**.
- 2 After your text editor opens, make your changes to the file.
- 3 Save the file and exit.

Note: Editing and saving a command file replaces the contents of the existing local or network file.

Deleting a Prologue/Epilogue File

You can remove a **Prologue/Epilogue** file from the list.

- 1 In **Advanced > Prologue/Epilogue**, select a **Prologue/Epilogue** file name from the list, and then click **Delete**.
- 2 In the delete confirmation box, click **Yes** to accept.

Note: Only the file name is removed from the command file list. The file itself is not deleted, but remains on the network or local computer.

Assigning a Prologue/Epilogue File

You can insert a **Prologue/Epilogue** file into a print job.

- 1 In **Advanced > Prologue/Epilogue**, select a **Prologue/Epilogue** file name from the list.
- 2 Under **Insertion Point**, select a place to insert the **Prologue/Epilogue** file.

Unassigning a Prologue/Epilogue File

If you designate a **Prologue/Epilogue** file as unassigned, you are removing it from the print job. It remains in the list. Unassigned selections are useful when the list contains several **Prologue/Epilogue** files, and you want to use some but not others.

- 1 In **Advanced > Prologue/Epilogue**, select a **Prologue/Epilogue** file name from the list.
- 2 Under **Insertion Point**, select **Unassigned**.

Specifying the Insertion Point

The insertion point is the location in the print job where the selected **Prologue/Epilogue** command file is processed by the printing system. Each file in the list can be assigned only one insertion point.

Note: The **Start of the page** and **End of the page** insertion point options are available only if **PCL 5e** is selected in the **PDL Settings** dialog box.

With a command file selected in the list, choose one insertion point option:

Unassigned

The selected command file is not inserted into the print job. This selection can be used when you are working with multiple command files and want to use some but not others. Select **Unassigned** for the command files you do not want to use in the print job.

Beginning of the print job

The command file is inserted as the first page of the print job. The document starts printing on the second page.

End of the print job

The command file is inserted as the last page of the print job, which prints after the last page of the document.

Start of the page

The command file is inserted at the top of each page of the print job.

End of the page

The command file is inserted at the bottom of each page of the print job.

Only on odd pages

If **Start of the page** or **End of the page** is selected, this option can be selected to insert the command file into all odd-numbered pages.

Only on even pages

If **Start of the page** or **End of the page** is selected, this option can be selected to insert the command file into all even-numbered pages.

Pages

If **Start of the page** or **End of the page** is selected, this option can be selected to insert the command file into specified pages. In the text box, type individual page numbers separated by commas, or a page range separated by a hyphen. For example, if you type 2 in the text box, the command file is inserted only into page 2. If you type 1, 3, 5-12 the command file is inserted into page 1, page 3, and pages 5 through 12. If the **Pages** option is selected and you click **OK** without typing any numbers, you will be prompted to specify page numbers.

Watermark

A watermark is a recognizable image or pattern that can be placed on a page or throughout a document. You can choose one of the standard watermarks or create your own text. The preview area at the left of the dialog box shows how the watermark appears on a page. This is useful for making adjustments to the appearance and location of the watermark.

Adding or Editing a Watermark

You can create a new watermark that displays your chosen text. Any watermark can be edited, though a limited number of options can be changed for default watermarks.

- 1** In **Advanced > Watermark**, click **Add** to create a user defined (custom) watermark; or under **Select watermark**, select a default or custom watermark and click **Edit**.
- 2** Under **Watermark name**, type a name, up to 39 characters. A default watermark cannot be renamed.
- 3** Under **Watermark text**, type your preferred text. This option is not available when editing a default watermark.
- 4** Select the font, style, and size of the text.
- 5** Select the color of the watermark from the list. The options available are black and shades of gray.
- 6** Select the watermark **Count**, to a maximum of 20. In the **Spacing** spin box, select the distance between two or more watermarks in tenths of an inch or in millimeters.
- 7** Select the **Position** of the watermark with one of the following options.
 - Centered (default)**

This option places the center of the watermark text in the center of the page.
 - User defined**

This option lets you manipulate the x and y coordinate boxes to move the text around the page.

You can also change the position by clicking the position button at the bottom of the preview area and then clicking the watermark image. Drag the pointer to move the watermark image.
- 8** Select the **Angle** of the watermark with one of the following options.
 - Diagonal (default)**

This option places the watermark text at the default angle on the page.
 - User defined**

This option lets you type a degree value for the angle. An angle is measured in degrees, from 0 to 360.

You can also change the angle by clicking the angle button at the bottom of the preview area. Click and hold as you drag the pointer to move the watermark image.
- 9** The **Rotate around center** check box at the bottom far right of the dialog box determines the method of rotation for the watermark. You must select **User defined** in both **Position** and **Angle** to enable this option. Select **Rotate around center** to position the watermark text with the center of the text as its axis, and clear it to position the watermark text with the left end of the text as its axis.
- 10** In all dialog boxes, click **OK**.

Selecting Pages for Watermark

The **Page selection** option for **Watermark** lets you choose the location for watermarks in your document.

- 1 In **Advanced > Watermark > Select watermark**, choose a default or custom watermark to print.
- 2 Under **Page selection**, choose pages for printing the watermark:
 - All pages**
This option prints the watermark on each document page.
 - First page only**
This option prints the watermark on the first document page.
 - All pages except first page**
This option prints the watermark on all pages after the first page.
 - Only on specified pages**
This option prints the watermark on page numbers typed in the box.
 - Print onto front outside cover**
This option prints the watermark on the front cover. It is available when **Cover mode** is selected in the **Publishing** tab. If **Cover mode** and **Front outside** are both selected in the **Publishing** tab, **Print onto front outside cover** is selected automatically.
- 3 In all dialog boxes, click **OK**.

Security Watermark

The **Security Watermark** is a plug-in feature that prints a nearly invisible image or text against a background pattern. The security watermark appears only when the printed page is photocopied. This helps to identify printed pages that should not be photocopied, or to distinguish between original prints and photocopies. Six standard security watermarks are available as text or image, and you can create custom security watermark text.

A notable feature of **Security Watermark** is the **Document guard pattern**, which prevents the document from being photocopied, scanned, faxed, or printed from memory. If a scan, fax, or print from memory is attempted, the process is stopped and an error message appears on the printer's operation panel.

Following installation of the printer driver, use the **Optional Printer Components** wizard to install the **Security Watermark** plug-in.

If **PCL XL** is selected in the **PDL Settings** dialog box, **Security Watermark** appears in the **Advanced** tab

The administrator can ensure that a security watermark is printed on all jobs by selecting **Device Settings > Administrator > Lock Settings > Lock Security Settings**.

Selecting **Security Watermark** sets these driver features to the following values:

Watermark in the **Advanced** tab is set to **None**.

Resolution in **Imaging > Print Quality > Custom > Custom Quality** is set to **600 dpi**.

Kyocera Image Refinement in **Imaging > Print Quality > Custom > Custom Quality** is set to **Off**.

EcoPrint in **Quick Print, Basic > Quality**, or **Imaging > Quality** is set to **Off**.

Adjustment Settings (Brightness and Contrast) in **Imaging > Grayscale > Adjustment > Custom** is set to **0**.

The reverse is also true. If these features are changed, then the **Security Watermark** selection is set to **None**, and cannot be used.

Adding or Editing a Security Watermark

You can create a new security watermark that displays text but not an image. Any security watermark can be edited, though a limited number of options can be changed for default security watermarks.

- 1** In the **Advanced** tab, click **Security Watermark**.
- 2** In the **Security Watermark** dialog box, click **Add**, to create a new security watermark; or under **Select security watermark**, select a default or custom security watermark and click **Edit**.
- 3** For **Security watermark name**, type a name up to 39 characters. A default security watermark cannot be renamed.
- 4** For **Security watermark text**, type text or leave blank. This option is not available when editing a default security watermark. Select from the following options:
 - None**
This option leaves the line blank.
 - User defined**
This option inserts your text up to 39 characters.
All other options display date, time, or other job information that is obtained from the computer or printer driver when the job is printed.
- 5** Select the desired font, size, style, and angle of the text.
- 6** Select **Print as footer also** if you want the first available line of security watermark text to be printed at the bottom of the page. Select the page position from the list. This option is useful because the security watermark itself is not normally visible on the printed page.
- 7** Under **Background pattern**, select a design for the security watermark background.
 - Standard pattern**
Select a design for the security watermark background. This option prints the selected pattern with the security watermark text or image.
 - Document guard pattern**
The document guard design appears as the security watermark background. This option prevents the printed page from being photocopied, scanned, faxed, or printed from memory. If a photocopy is attempted, then gray copy is

produced. If a scan, fax or print from memory is attempted, the process is stopped and an error message appears on the printing system's operation panel.

- 8 Select **Overprint** for applications such as Microsoft PowerPoint and Internet Explorer where the document content fills the entire page. The security watermark is printed over the document data so that it can appear in a photocopy. When editing an image, or if **Device Settings > PDL Settings > GDI compatible mode** is selected, **Overprint** is selected automatically.
- 9 Adjust the calibration. After adjusting calibration, in all dialog boxes click **OK**.

Adjusting Security Watermark Calibration

For a security watermark to be effective, it must be nearly invisible in a printed page and clearly visible in a photocopied page. Because printing systems and driver settings can vary, you must adjust the calibration before printing a security watermark. Adjusting the calibration is also recommended when changing the background pattern, replacing the toner or printing system, and after heavy printing activity.

- 1 In **Advanced > Security Watermark**, click **Add** to create a custom security watermark; or under **Select security watermark**, select a default or custom security watermark and click **Edit**.
- 2 After all security watermark options are selected in the **Add Security Watermark** or **Edit Security Watermark** dialog box, click **Adjust Calibration**.
- 3 Under **Pattern shading** and **Text contrast**, select initial options:
 - Light, Normal, Dark**
Select the shading density of the background pattern.
 - Contrast 1-9**
Select the level of contrast against the background pattern, from lightest to darkest.These selections may need to be changed after printing a sample in the next step.
- 4 Click **Print Sample** to print a page displaying all nine contrast options against the selected pattern shading. It is recommended to print a sample page for each pattern shading option.
- 5 From the **Text Contrast Sheet**, find the sample where the security watermark is most nearly invisible.
- 6 In the **Adjust Calibration** dialog box, select options to match the sample chosen in step 5.
- 7 In all dialog boxes, click **OK**.

Selecting Pages for Security Watermark

The **Page selection** options for security watermark determine where the security watermarks are placed in the print job.

- 1 In **Advanced > Security Watermark > Select security watermark**, choose a default or custom security watermark to print.
- 2 Under **Page selection**, choose pages for printing the security watermark:
 - All pages**
This option prints the security watermark on each document page.
 - First page only**
This option prints the security watermark on the first document page.
 - All pages except first page**
This option prints the security watermark on all pages after the first page.
 - Only on specified pages**
This option prints the security watermark on the page numbers typed in the text box.
 - Print onto front outside cover**
This option prints the security watermark on the front cover. This option is available when **Cover mode** is selected in the **Publishing** tab. If **Cover mode** and **Front outside** are both selected in the **Publishing** tab, **Print onto front outside cover** is selected automatically.
- 3 In all dialog boxes, click **OK**.

Status Monitor

The **Status Monitor** displays printing system status messages in the lower right corner of the window during printing. You can start a status monitor for each supported printing system. More than one status monitor can be displayed at one time.

Selecting Status Monitor Options

You can select how to display the **Status Monitor** image and select from available options.

Note: The **Status Monitor** image closes on its own after 5 minutes, if there is no printing activity.

- 1 In the **Advanced** tab, click **Status Monitor**.
- 2 If you want the **Status Monitor** image to appear during a print job, in the **Status Monitor** dialog box, select the **Status Monitor** check box.
- 3 To view the print job status without changing the **Status Monitor** setting, click **Open Status Monitor**.
The **Status Monitor** image appears in the lower right corner of your computer screen.

4 Move the pointer over the **Status Monitor** image to display balloon-style status messages containing information about printing system activity and the printer port. You can click the toner icon to display toner levels.

5 To display a list of options, right-click the **Status Monitor** icon in the system tray.

Hide the status monitor/Show the status monitor

Switches between hiding and showing the **Status Monitor** image.

Command Center RX

Opens a web browser to display a printer web page.

Note: If your printer is connected with a USB cable, this feature cannot be used. Define settings using the operation panel of the printing system.

Always on top

Leaves the Status Monitor image on top of other open windows.

Opacity

Adjusts the Status Monitor to let a variable amount of background to show through the image. Select a percentage between 20 to 100.

Enlarge window

Select to increase the size of the Status Monitor image.

Notification

Opens a dialog box with options for Status Monitor event notifications and sound files.

www.kyoceradocumentsolutions.com

Opens a web browser to the KYOCERA Document Solutions Inc. home page.

Exit

Closes the Status Monitor image.

Setting Status Monitor Preferences

You can configure printing system alerts with accompanying sound or speech in the Status Monitor **Preference** dialog box.

1 Right-click the **Status Monitor** image in the system tray.

2 Click **Notification**.

3 Select the **Enables Event Notification** check box.

4 Select an event for a **Status Monitor** alert.

Cover open

Paper jam

Add paper

Sleep

Add toner

Toner low
Not connected
Printing completed
Others

- 5** You can also add sound or speech to your chosen alert.

To add a sound file:

Clear the **Use Text to speech** check box.

The **Sound file** text box becomes available. Type the location of a sound file (.WAV), or **Browse** to find a sound file located on your computer.

To add speech:

Select **Use Text to speech**.

Type your preferred text in the **Text to speech** text box. The Microsoft Text to Speech utility reads your typed text and plays it back in a spoken voice.

After you select a sound file, or type text for Text to speech, you can click the arrow below the text box to play the sound or speech.

- 6** Click **Apply** to save your settings, click **OK** to save your settings and close the dialog box, or click **Cancel** to close the dialog box without saving any settings.

EMF Spooling

EMF (Enhanced MetaFile) is a spool file format used in printing by the Microsoft Windows operating system. When a print job is sent from an application, it is transferred to the spool file. The application writes to and the printer driver reads from the spool file simultaneously. For multiple or large documents, this quickly returns application control to the user while the printer is still printing the document.

Note: **EMF spooling** is unavailable when **Allow data passthrough** is selected in the **KPDL Settings** dialog box.

Selecting EMF Spooling

To print with EMF spooling:

- 1** From the **Advanced** tab, select the **EMF Spooling** check box.
- 2** Click **OK** and continue the printing process as usual.

Enable Client Profile

Client profile refers to profile settings saved on a client computer. You have the choice to use your local profiles or the server profiles. This feature is intended for the client computer in a client-server environment.

In the **Advanced** tab, clear the **Enable client profile** check box to select profiles from the server to apply to print jobs created by the driver. Server profiles are read-only.

Select the **Enable client profile** check box for using custom profiles locally in the driver.

Glossary

A **Access code** A four-digit code that you must enter at the printing system's operation panel to print a Private print job.

Application based printing An administrator can associate a profile with an application so that all printing from the application uses the same profile settings. This makes profiles easier to use and ensures consistent printing from an application.

Auto configure Device settings feature that queries a printing system through the network and automatically retrieves settings for optional devices, and memory. Driver settings are updated with information received from the physical printing system. Installed devices display in the Preview image.

B **Booklet** Layout feature that prints a multi-page document in a booklet format by using a duplex unit. Two pages are printed on each side of a sheet to create a document that can be read like a book.

C **Cassette** A sliding plastic tray that holds a supply of paper for input to the printer.

Collate Outputs the complete print job set by set. With Collate cleared, it prints each page by sets. For example, with Collate selected, three copies of a five-page document output as pages one through five in succession, three times.

Custom box Job option that stores print jobs in the printing system's memory for later printing from the operation panel. Custom box jobs are saved to boxes that are assigned to users, and can be restricted by password. Your printing system must have an installed SSD to use this feature.

D **Don't use application name** Don't use application name is an option to shorten the application defined job name for jobs created in Microsoft Word or PowerPoint. The file name will appear clearly in the job list.

E **EcoPrint** Imaging feature that changes toner saturation, making the entire image, text and graphics, appear lighter in the printed job. The following values in the EcoPrint list represent toner saved from none to the maximum amount: Off, Least, Less, Medium, More, and Most – toner saved. The amount of toner is also determined by the driver settings and the type of data printed (text, graphics, or both). EcoPrint does not increase print speed. This feature is also available in the Quick Print and Basic tabs. If EcoPrint is turned on in the Quick Print or Basic tab, the Imaging tab displays the previously selected level.

Edit Quick Print This feature lets you customize the Quick Print view with your preferred print job options.

e-MPS Job storage (e-MPS) is a set of options for saving print jobs in printing system memory, so that you can print or reprint them later. Print jobs can easily be reprinted later from the printing system's operation panel, and printing of sensitive documents can be restricted to approved users.

Enable client profile Client profile refers to profile settings saved on a server and accessed by clients in a client/server environment. This feature in the Advanced tab lets an administrator control and distribute profiles.

G

GDI compatible mode A page description language option that accurately reproduces what is viewed on the screen using the Microsoft Graphical Device Interface (GDI) component to render the document. It generates data in a raster printing format, creating a larger printable file.

Grayscale Range of gray tones varying from black at the darkest to white at the lightest.

Gutter Blank space on the left side or top of a printed page that can be increased by scaling down text and graphics. This supports stapling and hole punching. When used with Duplex printing, the enlarged blank space lines up evenly on both sides of the sheet. The larger blank space is created by shifting the printable area to the right or down as much as one inch (25.4 mm).

H

Halftone screen Imaging process that breaks down an image into dots. An experienced user can adjust Halftone screen settings to create shades of gray in graphic images. Larger dots spaced close together create darker shades, and smaller dots spaced farther apart create lighter shades. Shading can be varied by adjusting the number of rows of dots, the angle at which rows of dots are placed, and the shape of the dots.

I

Ignore Application Collation Check box in Device Settings > Compatibility that determines the priority of Collate settings. If the check box is selected, the printer driver setting is used. If the check box is cleared, the software application setting is used.

J

Job accounting An accounting system that records and controls the number of pages printed by each account ID. Account IDs can be assigned at the printing system and stored in the driver. After account IDs are assigned, you can use the Job accounting option to print in the Job accounting mode.

Job name A Job name is a unique identifier for each print job, to help you find and print the job from the printing system's operation panel. When you send a print job using one of the Job storage (e-MPS) options, you can assign a custom name to the job or use the name of the application file.

Job storage Job option that stores a print job permanently on a storage device for printing later. You also have the option of protecting the print job from unauthorized printing by using an access code. This feature is available when an SSD or SD card is installed and selected in Device Settings.

L

Line Thinning This feature reduces the pen width of lines used for barcodes and drawings. Drawing values controlled by an application are not changed. Line thinning is available when PCL XL is selected in the PDL Settings dialog box.

Lock Settings Locking feature for some settings that an administrator can specify at the tab or feature level in the driver. The settings are then applied to print jobs from the driver, and changes are restricted. Locking a setting will also lock that setting where it appears in other tabs. The administrator can also set a password that is required to temporarily unlock a feature.

M

Media source enumeration A Device Settings option that maintains compatibility for cassettes and feeders between old drivers and new drivers or when moving from one manufacturer to another. Compatibility creates a smooth transition for environments using macros or PRESCRIBE commands to access cassettes and feeders.

MP tray Source tray used for transparencies, labels, envelopes, cardstock, coated media, and custom printing media.

Multiple pages per sheet This feature lets you print several pages on a single sheet of paper for the purpose of reviewing the document and conserving paper.

O

Operation panel The keys and display on the printing system. Use the operation panel to set options such as media type and EcoPrint, and to print jobs stored in storage device memory.

Optional Printer Components Optional Printer Components include Common Profiles and Plug-In Modules, and need to be installed separately from the driver installer. They are located on the Product Library disc in the Advanced Tools menu.

Orientation The position of the pages in a print job, either short side at top (portrait) or long side at top (landscape). If Rotate is selected, the print job orientation is rotated 180 degrees.

P

Pattern Scaling Feature that can help improve visual compatibility between screen and print output. Graphics objects, such as a shape or a path, often include patterns and fills that are composed of collections of printed dots. A pattern is a planned or random repetition of colors, shapes, lines, values and textures to create a visual arrangement. A fill is the application of a color or grayscale to a graphics object. If printed patterns and fills do not match the appearance of that on the screen, use Pattern scaling to select a different density of printed dots.

PDF The Adobe portable document format (PDF) is independent of the application software, hardware, and operating system used to create documents, and also of the output device on which they are displayed or printed.

PDL Page Description Language. This is the language used by your computer to tell the printing device how to print a document. Availability of some printing options depends on the selected PDL.

Plug-in An accessory program that integrates with the printer driver to enhance or extend the driver's capabilities.

Poster Layout feature for printing a document in a larger size than the maximum supported by the printer so the cumulative sheets can be assembled as a poster. Use this feature to print a document in a large, eye-catching poster format, up to 25 times larger than the original document size.

PRESCRIBE An internal printer language that embeds commands into specified locations in a print job.

Print graphics as black This option prints all color graphics and text with black, rather than grayscale. This feature is intended for CAD applications.

Print preview This feature lets you view your document before you send it to print.

Print text as black Prints all color text as black. It produces faster printing of color print jobs by reducing the amount of data sent to the printer. In black and white printing, it increases the detail for light-colored text printed. White text and image colors are unaffected.

Private print Job option that saves print jobs on a storage device until a four-digit access code is entered for printing. Private print jobs are deleted when the printing system is turned off or after printing.

Profile A set of user defined driver settings that are saved as a group. Once saved, you can select a profile by name and apply its settings to a print job without selecting each feature individually.

Prologue/Epilogue Advanced feature that allows you to insert a macro into specific locations in the print job. An advanced user may choose to use this feature to embed a PRESCRIBE command that will call a macro to overlay PRESCRIBE form data or a graphic object, such as a logo or a signature, at a specific point in the print job.

Proof and hold Job option that prints one copy of a print job so that you can proof it before printing the remaining copies. This feature is available when an SSD, RAM disk, or SD card is installed and selected in Device Settings. After the proof copy is printed and checked, remaining copies can be printed from the printing system's operation panel without sending the job again from the computer.

Q

Quick copy Job option that prints all copies of a print job and stores the job temporarily on a storage device for reprinting later. This feature is available when an SSD or SD card is installed and selected in Device Settings.

Quick Print tab The Quick Print tab improves usability by providing an easier way to set print options. You can choose basic settings or a predefined printer profile, rather than having to go to various tabs. Quick Print settings can be captured in a group called a profile. Profiles support common printing tasks, saving you from having to repeatedly select the same settings. The Administrator can set the view of the Quick Print tab through the Installation process, or Administrator Settings in Properties.

R

RAM (Random-Access Memory) disk A feature that lets you set up an area within the printing system as virtual memory for faster printing. RAM disk is not an attached device, but an allocation of existing printing system memory. RAM disk is temporary. All data sent to RAM disk memory will be lost when the printing system is reset or turned off.

Reverse Print output option that sends a print job to a destination from the last page to the first. This option is unavailable when Printer default is selected.

S

Scaling Increases or decreases text and graphics on a page. Scaling is unavailable if other Layout tab options are selected.

SD (Secure Digital) card Memory card format developed by the SD Card Association (SDA) for use in many devices. It retains data even if the printing system is turned off.

Security Watermark Plug-in feature that adds watermark text and a background pattern to a print job. The text blends into the background pattern making it nearly invisible when printed. The security watermark appears only when the printed page is

photocopied. A security watermark can be used to help protect against unauthorized reproduction of documents, or simply to differentiate original documents from photocopies.

Separation Finishing feature that stacks print jobs in an output tray so that one print job or copy is clearly distinguished from another.

SNMP Simple Network Management Protocol. The standard TCP/IP protocol for managing IP network devices, including printing devices. SNMP settings determine the level of security when using the Auto Configure feature, and prevent unauthorized printing to the SNMPv3 printing device. SNMP settings must be set in the Administrator settings in Device Settings, and in the printing system's Command Center RX.

SSD (Solid-State Drive) Storage device that uses solid-state memory to store print jobs, as opposed to a mechanically rotating disk. It retains data even if the printing system is turned off.

Status monitor Optional feature that displays printing system status messages in the lower right corner of the window during printing. You can customize the appearance of the status monitor, and determine what messages are displayed and how by selecting preferences and notifications.

T

Transparency A clear plastic, page-sized sheet used as a printing medium.

Transparency interleaving Publishing feature that inserts a backing sheet between printed transparencies. The backing sheet, also known as an interleaf, helps keep transparencies clean and prevents them from clinging together.

W

Watermark The Watermark feature is available in the Advanced tab. A watermark is a recognizable image or pattern that can be placed on a page or throughout a document. You can choose one of the standard watermarks or create your own text.

KYOCERA Document Solutions America, Inc.**Headquarters**

225 Sand Road,
Fairfield, New Jersey 07004-0008, USA
Phone: +1-973-808-8444
Fax: +1-973-882-6000

Latin America

8240 NW 52nd Terrace Dawson Building, Suite 100
Miami, Florida 33166, USA
Phone: +1-305-421-6640
Fax: +1-305-421-6666

KYOCERA Document Solutions Canada, Ltd.

6120 Kestrel Rd., Mississauga, ON L5T 1S8,
Canada
Phone: +1-905-670-4425
Fax: +1-905-670-8116

**KYOCERA Document Solutions
Mexico, S.A. de C.V.**

Calle Arquimedes No. 130, 4 Piso, Colonia Polanco
Chapultepec, Delegacion Miguel Hidalgo,
Distrito Federal, C.P. 11560, México
Phone: +52-555-383-2741
Fax: +52-555-383-7804

KYOCERA Document Solutions Brazil, Ltda.

Av. Tambore, 1180 Mod. B-09 CEP 06460-000
Tambore-Barueri-SP, Brazil
Phone: +55-11-4195-8496
Fax: +55-11-4195-6167

**KYOCERA Document Solutions
Australia Pty. Ltd.**

Level 3, 6-10 Talavera Road North Ryde N.S.W, 2113,
Australia
Phone: +61-2-9888-9999
Fax: +61-2-9888-9588

**KYOCERA Document Solutions
New Zealand Ltd.**

1-3 Parkhead Place, Albany, Auckland 1330,
New Zealand
Phone: +64-9-415-4517
Fax: +64-9-415-4597

KYOCERA Document Solutions Asia Limited

16/F., Mita Centre, 552-566, Castle Peak Road
Tsuenwan, NT, Hong Kong
Phone: +852-2610-2181
Fax: +852-2610-2063

**KYOCERA Document Solutions
(Thailand) Corp., Ltd.**

335 Ratchadapisek Road, Bangsue, Bangkok 10800,
Thailand
Phone: +66-2-586-0333
Fax: +66-2-586-0278

**KYOCERA Document Solutions
Singapore Pte. Ltd.**

12 Tai Seng Street #04-01A,
Luxasia Building, Singapore 534118
Phone: +65-6741-8733
Fax: +65-6748-3788

**KYOCERA Document Solutions
Hong Kong Limited**

16/F., Mita Centre, 552-566, Castle Peak Road
Tsuenwan, NT, Hong Kong
Phone: +852-2429-7422
Fax: +852-2423-2159

**KYOCERA Document Solutions
Taiwan Corporation**

6F., No.37, Sec. 3, Minquan E. Rd.,
Zhongshan Dist., Taipei 104, Taiwan R.O.C.
Phone: +886-2-2507-6709
Fax: +886-2-2507-8432

KYOCERA Document Solutions Korea Co., Ltd.

18F, Kangnam bldg, 1321-1,
Seocho-Dong, Seocho-Gu, Seoul, Korea
Phone: +822-6933-4050
Fax: +822-747-0084

**KYOCERA Document Solutions
India Private Limited**

First Floor, ORCHID CENTRE
Sector-53, Golf Course Road, Gurgaon 122 002,
India
Phone: +91-0124-4671000
Fax: +91-0124-4671001

KYOCERA Document Solutions Europe B.V.

Bloemlaan 4, 2132 NP Hoofddorp,
The Netherlands
Phone: +31-20-654-0000
Fax: +31-20-653-1256

KYOCERA Document Solutions Nederland B.V.

Beechavenue 25, 1119 RA Schiphol-Rijk,
The Netherlands
Phone: +31-20-5877200
Fax: +31-20-5877260

KYOCERA Document Solutions (U.K.) Limited

8 Beacontree Plaza,
Gillette Way Reading, Berkshire RG2 0BS,
United Kingdom
Phone: +44-118-931-1500
Fax: +44-118-931-1108

KYOCERA Document Solutions Italia S.p.A.

Via Verdi, 89/91 20063 Cernusco s/N.(MI),
Italy
Phone: +39-02-921791
Fax: +39-02-92179-600

KYOCERA Document Solutions Belgium N.V.

Sint-Martinusweg 199-201 1930 Zaventem,
Belgium
Phone: +32-2-7209270
Fax: +32-2-7208748

KYOCERA Document Solutions France S.A.S.

Espace Technologique de St Aubin
Route de l'Orme 91195 Gif-sur-Yvette CEDEX,
France
Phone: +33-1-69852600
Fax: +33-1-69853409

KYOCERA Document Solutions Espana, S.A.

Edificio Kyocera, Avda. de Manacor No.2,
28290 Las Matas (Madrid), Spain
Phone: +34-91-6318392
Fax: +34-91-6318219

KYOCERA Document Solutions Finland Oy

Atomitie 5C, 00370 Helsinki,
Finland
Phone: +358-9-47805200
Fax: +358-9-47805390

**KYOCERA Document Solutions
Europe B.V., Amsterdam (NL) Zürich Branch**

Hohlstrasse 614, 8048 Zürich,
Switzerland
Phone: +41-44-9084949
Fax: +41-44-9084950

**KYOCERA Document Solutions
Deutschland GmbH**

Otto-Hahn-Strasse 12, 40670 Meerbusch,
Germany
Phone: +49-2159-9180
Fax: +49-2159-918100

KYOCERA Document Solutions Austria GmbH

Eduard-Kittenberger-Gasse 95, 1230 Vienna,
Austria
Phone: +43-1-863380
Fax: +43-1-86338-400

KYOCERA Document Solutions Nordic AB

Esbogatan 16B 164 75 Kista, Sweden
Phone: +46-8-546-550-00
Fax: +46-8-546-550-10

KYOCERA Document Solutions Norge NUF

Postboks 150 Oppsal, 0619 Oslo,
Norway
Phone: +47-22-62-73-00
Fax: +47-22-62-72-00

KYOCERA Document Solutions Danmark A/S

Ejby Industrivej 60, DK-2600 Glostrup,
Denmark
Phone: +45-70223880
Fax: +45-45765850

KYOCERA Document Solutions Portugal Lda.

Rua do Centro Cultural, 41 (Alvalade) 1700-106 Lisboa,
Portugal
Phone: +351-21-843-6780
Fax: +351-21-849-3312

KYOCERA Document Solutions**South Africa (Pty) Ltd.**

49 Kyalami Boulevard,
Kyalami Business Park 1685 Midrand, South Africa
Phone: +27-11-540-2600
Fax: +27-11-466-3050

KYOCERA Document Solutions Russia LLC

Botanichesky pereulok 5, Moscow, 129090,
Russia
Phone: +7(495)741-0004
Fax: +7(495)741-0018

KYOCERA Document Solutions Middle East

Dubai Internet City, Bldg. 17,
Office 157 P.O. Box 500817, Dubai,
United Arab Emirates
Phone: +971-04-433-0412

KYOCERA Document Solutions Inc.

2-28, 1-chome, Tamatsukuri, Chuo-ku
Osaka 540-8585, Japan
Phone: +81-6-6764-3555
<http://www.kyoceradocumentsolutions.com>

